

Ballyhaise Weekly Farm Notes - Monday 13/02/2011

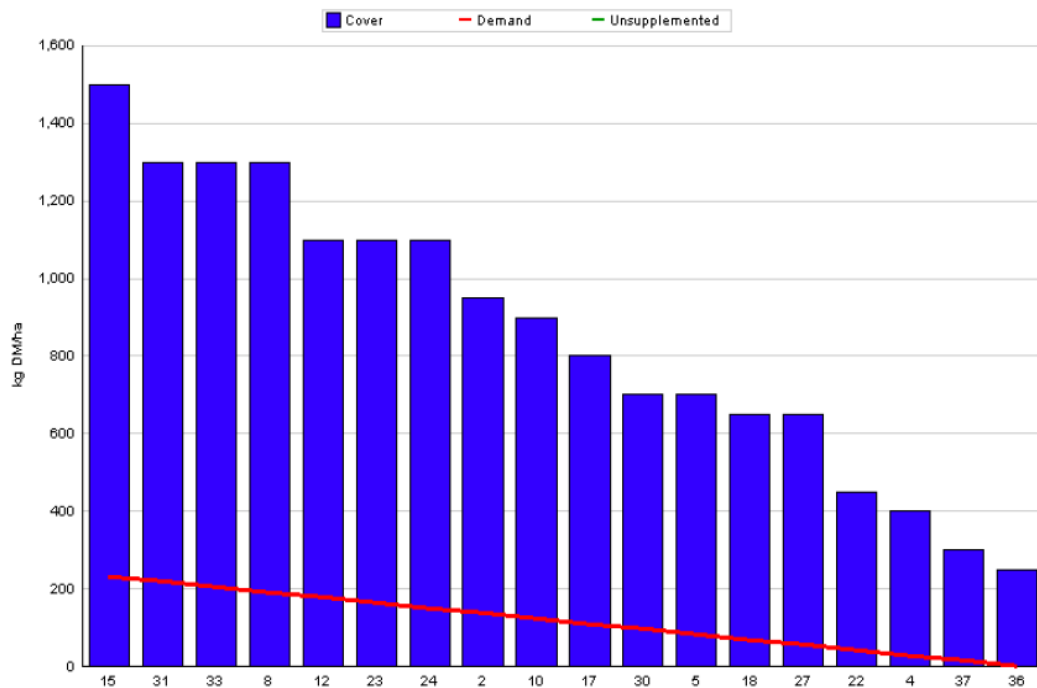
A. Critical Issues

1. Use rotation planner to allocate grass daily.
2. Minimise risk of mastitis infection around calving.
3. Ensure each calf receives adequate colostrum.

B. On farm situation

1. Soil temperature today is 6.7°C.
2. Total weekly rainfall is 18mm.
3. Average growth was 3kgDM/ha/day, (16% DM).
4. Feeding 3kg of concentrate.
5. Farm feed wedge (13/2/12).

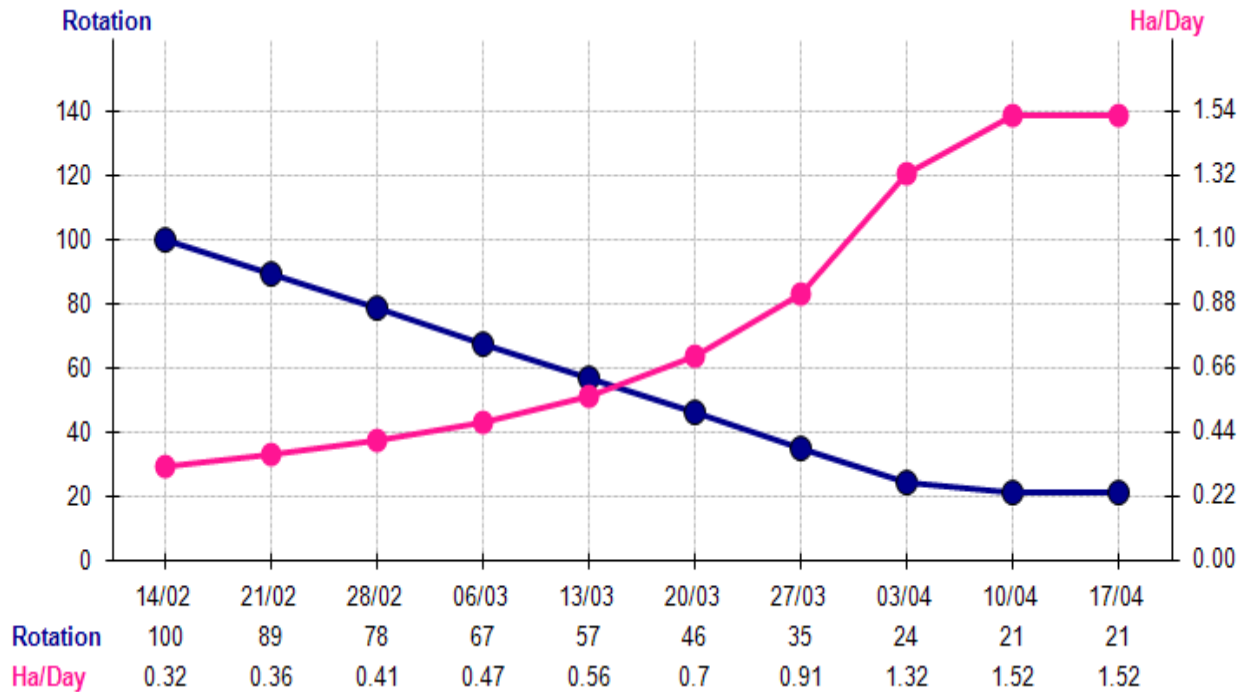
Grass Allocation /cow (kg grass dry matter/LU)	7	Farm Cover (kg DM/LU) :	2617
Concentrate Fed (kg/cow) :	3		
Silage Fed (kg DM/cow) :	0		
N Application Rate (units/acre) :		Stock Rate (LU/ha) :	.33
N Application Rate (kg/ha) :		Growth Rate :	3
Residual Height :	4	Farm Demand (kg DM/ha/day) :	2
Total Livestock (LU) :	5	Target pregrazing yield (kg DM/ha) :	231



6. Average farm cover is 760 Kg DM/ha which is on target for the beginning of the grazing season. Over winter growth averaged 3kg DM/ha/day.
7. Half a bag of urea has been spread on 60% of the grazing area. The paddocks with more than 1100kg DM / ha will be grazed and will receive slurry and

some of the drier paddocks with less than 500kg DM / ha have got 2000 gal / acre of watery slurry from the lagoon.

8. Spring Rotation planner (28/02/11)



Week	Ha/Day	Target Ha Grazed	Target %	Actual Ha Grazed	Actual %
14/02 - 20/02	0.32	2.24	7.0		
21/02 - 27/02	0.36	4.76	14.9		
28/02 - 05/03	0.41	7.63	24.0		
06/03 - 12/03	0.47	10.92	34.3		
13/03 - 19/03	0.56	14.84	46.6		
20/03 - 26/03	0.70	19.74	62.0		
27/03 - 02/04	0.91	26.11	82.0		
03/04 - 09/04	1.32	35.35	111.0		

9. The planned start of calving is the 12th of February, there are ten cows calved to date, these are mostly heifers. They were turned out to grass today and are being allocated 7kg DM of grass per cow per day and 3kg of concentrate.

10. The heifers are being calved on straw to minimise the risk of mastitis and the cows are being calved on a clean area on the pad.

11. No milk has been collected yet so we have no results from the processor.

C. Critical short term actions :

- Allocating grass in 12hr blocks.
- 3kg concentrate being fed.
- Hygiene around calving.
- Colostrum to calves.

www.agresearch.teagasc.ie/moorepark/

