

## Ballyhaise Weekly Farm Notes - Monday 20/02/2011

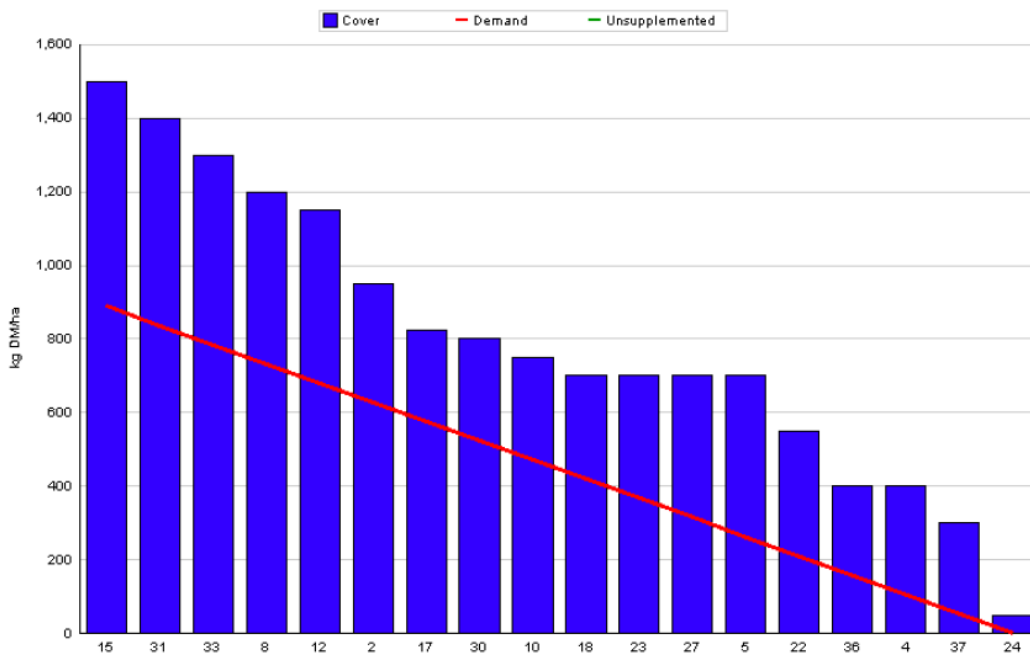
### A. Critical Issues

1. Use rotation planner to allocate grass daily.
2. Minimise risk of mastitis infection around calving.
3. Ensure each calf receives adequate colostrum.

### B. On farm situation

1. Soil temperature today is 5.5°C.
2. Total weekly rainfall is 12mm.
3. Average growth was 6kgDM/ha/day, (17% DM).
4. Feeding 3kg of concentrate.
5. Farm feed wedge (20/2/12).

Grass Allocation /cow (kg grass dry matter/LU)	10	Farm Cover (kg DM/LU) :	835
Concentrate Fed (kg/cow) :	3		
Silage Fed (kg DM/cow) :	0		
N Application Rate (units/acre) :		Stock Rate (LU/ha) :	1.00
N Application Rate (kg/ha) :		Growth Rate :	6
Residual Height :	4	Farm Demand (kg DM/ha/day) :	10
Total Livestock (LU) :	15	Target pregrazing yield (kg DM/ha) :	889

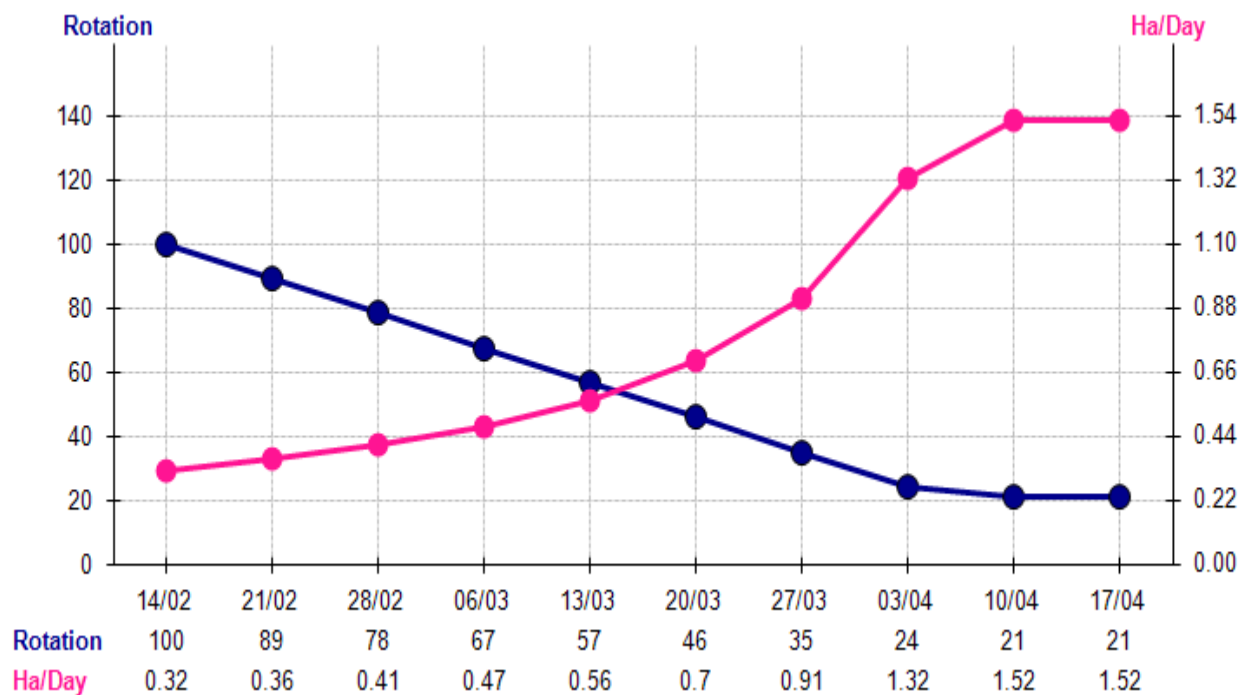


6. Average farm cover is 740 Kg DM/ha which is on target for the beginning of the grazing season.
7. Grazing conditions have been poor this week and grass is being allocated in 12 hr blocks to minimise poaching damage. We are on-off grazing during very wet periods and cows were housed fully for two nights and fed silage due to very heavy rain. The first two paddocks to be grazed had pre-grazing covers of 1100 Kg DM/ha, which were suitable for grazing during wet conditions.

8. Half a bag of urea has been spread on 60% of the grazing area. The paddocks with more than 1100kg DM / ha will be grazed and will receive slurry and some of the drier paddocks with less than 500kg DM / ha have got 2000 gal / acre of watery slurry from the lagoon.

9. Spring Rotation planner (28/02/11)

There was 4% of the area grazed over the past 7 days which is behind target. Some of the lighter covers may have to be grazed first to catch up over the next few weeks.



Week	Ha/Day	Target Ha Grazed	Target %	Actual Ha Grazed	Actual %
14/02 - 20/02	0.32	2.24	7.0	1.3	4
21/02 - 27/02	0.36	4.76	14.9		
28/02 - 05/03	0.41	7.63	24.0		
06/03 - 12/03	0.47	10.92	34.3		
13/03 - 19/03	0.56	14.84	46.6		
20/03 - 26/03	0.70	19.74	62.0		
27/03 - 02/04	0.91	26.11	82.0		
03/04 - 09/04	1.32	35.35	111.0		

10. The planned start of calving was the 12<sup>th</sup> of February, there are 30 cows calved to date (25%). There are 32 live calves -18 replacement heifers and one calf born dead. One cow had to be assisted to date.
11. The heifers are being calved on straw to minimise the risk of mastitis and the cows are being calved on a clean area on the pad. There are 14 heifers calved out of 28 to date.
12. Average milk yield is 14.8 kg at 4.02% fat and 3.61% protein (1.13kg MS/cow), lactose 4.65%, SCC 193k.

**C. Critical short term actions :**

- Allocating grass in 12hr blocks.
- On/off grazing.
- 3kg concentrate being fed.
- Hygiene around calving.
- Colostrum to calves.

[www.agresearch.teagasc.ie/moorepark/](http://www.agresearch.teagasc.ie/moorepark/)

