

## Ballyhaise Weekly Farm Notes - Monday 30/04/2011

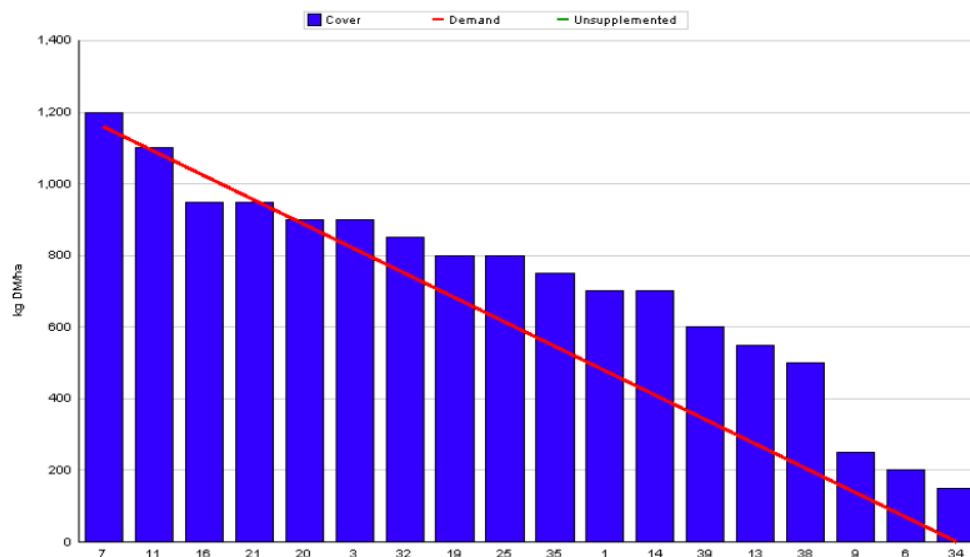
### A. Critical Issues

1. Ensure cows are on a rising plane of nutrition.
2. Maintain grazing residuals at 4cm.
3. Accurate heat detection.

### B. On farm situation

1. Soil temperature today is 8.2°C.
2. Total weekly rainfall is 12mm.
3. Average growth was 42kgDM/ha/day, (16% DM).
4. Feeding 4kg of concentrate.
5. Farm feed wedge (30/04/12).

Moorepark Animal & Grassland Research and Innovation Centre		GrazePlan - Grass Measurement Report	
Group :	TEAGASC RESEARCH FARMS	Date Produced :	03-MAY-12
Farm :	Ballyhaise Farm	Ballyhaise calving date and genotype study 2012	
Date :	30-APR-12	Treatment :	Holstien Fresian
Rotation Length :	25	Grass Allocation /LU (kg DM/LU) :	13
Number of Cows :	60	Farm Cover (kg DM/ha) :	690
Grass Allocation /cow (kg grass dry matter/LU)	13	Farm Cover (kg DM/LU) :	194
Concentrate Fed (kg/cow) :	4	Stocking Rate (LU/ha) :	3.57
Silage Fed (kg DM/cow) :	0	Growth Rate :	42
N Application Rate (units/acre) :		Farm Demand (kg DM/ha/day) :	46
N Application Rate (kg/ha) :		Target pregrazing yield (kg DM/ha) :	1159
Residual Height :	4		
Total Livestock (LU) :	60		



6. Growth has picked up this week but still remains poor for the time of year. Silage has been removed from the diet but 4kg of concentrate is still being fed to hold rotation length. Growth rate for the past 7 days was measured at 43 DM / ha / day and demand is 46 kg DM /ha / day.

7. Farm cover has increased this week to 690 kg Dm / ha (195kg DM / LU), and cows are grazing covers of 1200kg DM / ha. This cover includes the total area available as we have not closed up any silage area yet because growth rates have been so poor.
8. Ground conditions are quite good and paddocks are being grazed out to 4cm on average with no damage.
9. Average BCS is 2.88 with 9% of the below 2.75 BCS, these cows are being milked once a day and their condition will be monitored closely. Another 5 cows (4%) have been identified as potential candidates for once a day milking if their BCS does not improve over the next few weeks.
10. Mating start date is the 1<sup>st</sup> of May for cows and heifers. All cows were scanned pre-breeding to identify problem cows. In total there were 113 scanned: there were 8 cows to get washed out (6 of which were late calvers), there were 4 cows with severe metritis that received antibiotics and 4 cows were anoestrus and will get CIDRs.
11. Tail paint is topped up daily and cows are observed at both milkings, and late in the evenings.
12. The heifers were weighed on Monday and averaged 298 kg which is on target for crossbred heifers; however there are 10 of the 33 heifers below target. They have gained 1.3kg per day since the beginning of April. Heifers will be served for 6 days and we will use PG on heifers which have not been submitted at that stage.
13. First batch of heifer calves weaned this week at average weight of 86kg. Lightest calf was 77kg.
14. Average milk yield is 23.2kg at 4.64% fat and 3.32% protein (1.86kg MS/cow), lactose 4.90%, SCC 100k, TBC 4k.

### C. Critical short term actions :

- Allocating grass in full paddocks.
- 4kg concentrate being fed.
- Top up tail paint daily.

[www.agresearch.teagasc.ie/moorepark/](http://www.agresearch.teagasc.ie/moorepark/)



