

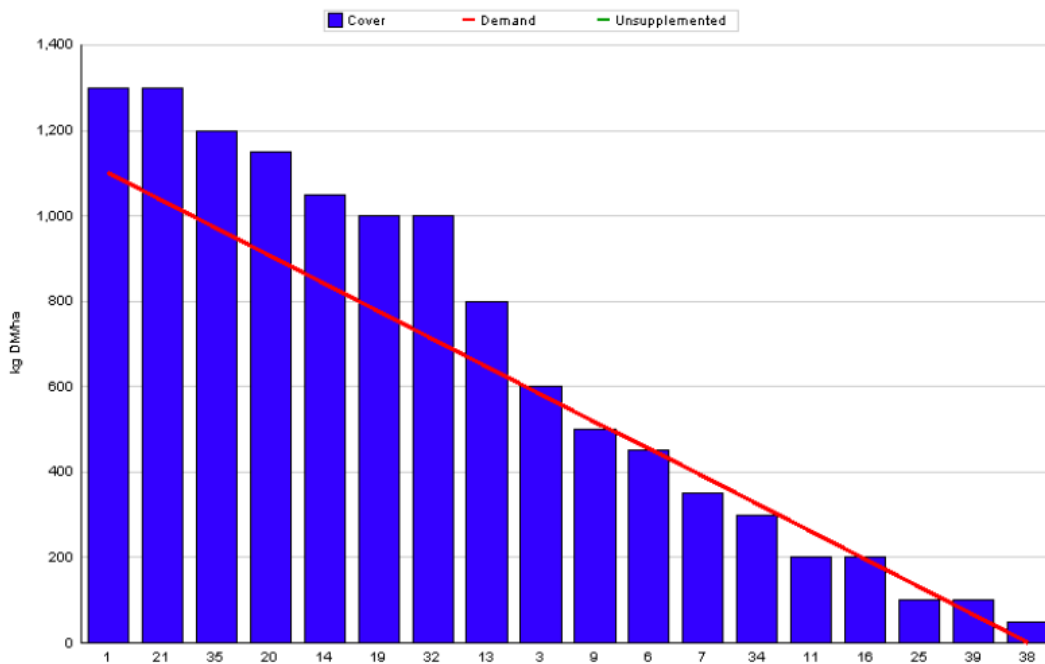
Ballyhaise Weekly Farm Notes - Monday 08/05/2011

A. Critical Issues

1. Ensure cows are on a rising plane of nutrition.
2. Maintain grazing residuals at 4cm.
3. Accurate heat detection.

B. On farm situation

1. Soil temperature today is 8.2°C.
2. Total weekly rainfall is 8mm.
3. Average growth was 35kgDM/ha/day, (15% DM).
4. Feeding 4kg of concentrate.
5. Farm feed wedge (08/05/12).



6. Growth rate for the past 7 days was measured at 36kg DM / ha / day and demand is 46 kg DM /ha / day. Growth is being restricted by low temperatures and is unlikely to improve over the next few days. No area has been closed for silage and 4 kg of concentrate is being fed to reduce demand.
7. Farm cover is 640 kg Dm / ha (179 kg DM / LU), and cows are grazing covers of 1300kg DM / ha.
8. Ground conditions are quite good and paddocks are being grazed out to 3.7cm on average with no damage. We grazed out most of the wetter paddocks this week when ground conditions were good.
9. Average BCS is 2.88 with 9% of the below 2.75 BCS, these cows are being milked once a day and their condition will be monitored closely. Another 5 cows (4%) have been identified as potential candidates for once a day milking if their BCS does not improve over the next few weeks.

10. Mating start date is the 1st of May for cows and heifers. All cows were scanned pre-breeding to identify problem cows. In total there were 113 scanned: there were 8 cows to get washed out (6 of which were late calvers), there were 4 cows with severe metritis that received antibiotics and 2 cows were anoestrus and got CIDRs.
11. Tail paint is topped up daily and cows are observed at both milkings, at midday and late in the evenings. 50 cows have been submitted in the first 7 days (42%), 6 of these cows were submitted on paint alone while all other animals showed strong signs of heat. The target is to submit 90% of cows in the first 24 days.
12. Started to AI heifers on the first of May, 14 heifers were submitted in the first 7 days (41%). The other 20 were injected with PG yesterday and will be bulled on standing heat. Two stock bulls will be introduced to mop up next week.
13. First batch of heifer calves weaned last week at average weight of 86kg. Lightest calf was 77kg.
14. Average milk yield is 25.8kg at 3.96% fat and 3.4% protein (1.9kg MS/cow), lactose 4.90%, SCC 100k, TBC 11k.

C. Critical short term actions :

- Allocating grass in full paddocks.
- 4kg concentrate being fed.
- Top up tail paint daily.
- Close observation of cows for heat.

www.agresearch.teagasc.ie/moorepark/



