

## Ballyhaise Weekly Farm Notes - Monday 05/06/2011

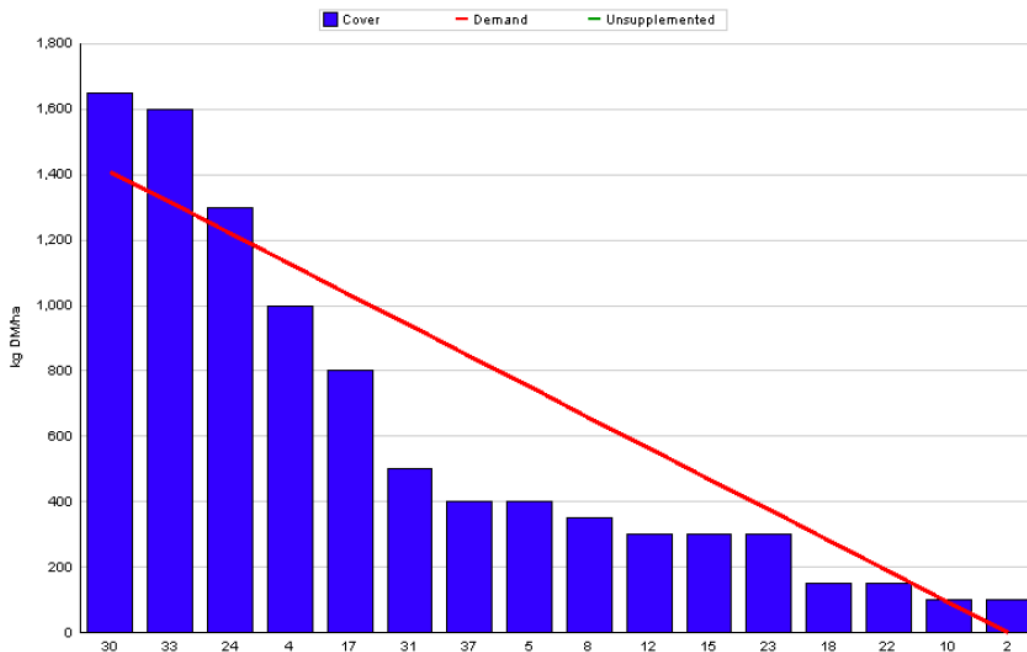
### A. Critical Issues

1. **Maintain high intakes at grass.**
2. **Remove surpluses quickly.**
3. **Maintain grazing residuals at 4cm.**
4. **Accurate heat detection.**

### B. On farm situation

1. Soil temperature today is 13°C.
2. Total weekly rainfall is 17mm.
3. Average growth was 65kgDM/ha/day, (15% DM).
4. Feeding 1kg of concentrate.
5. Farm feed wedge (05/06/12).

Rotation Length :	21	Grass Allocation /LU (kg DM/LU) :	16
Number of Cows :	56	Farm Cover (kg DM/ha) :	655
Grass Allocation /cow (kg grass dry matter/LU)	16	Farm Cover (kg DM/LU) :	156
Concentrate Fed (kg/cow) :	1		
Silage Fed (kg DM/cow) :	0		
N Application Rate (units/acre) :		Stocking Rate (LU/ha) :	4.19
N Application Rate (kg/ha) :		Growth Rate :	65
Residual Height :	4	Farm Demand (kg DM/ha/day) :	67
Total Livestock (LU) :	56	Target pregrazing yield (kg DM/ha) :	1408



6. Growth is back a little this week with average growth over the past seven days of 75 Kg DM / ha. The growth rate of 65 on the wedge above is average of the last 4 days.

7. The sudden burst of growth last week has caused a deterioration in grass quality with a lot of steam appearing in swards. Eight paddocks have been removed as bale silage over the past 2 weeks to help maintain grass quality. These paddocks were cut as soon as a surplus was evident to maintain flexibility and have high quality after grass back in the rotation which will allow us to remove some of the poorer quality paddocks over the next few weeks.
8. Farm cover is 655 kg Dm / ha (156 kg DM / LU), and cows are grazing covers of 1600kg DM / ha. This is on the upper limit of what we would like but removing another paddock for silage will reduce cover per cow to 125kg DM / cow which is too low.
9. Grazing conditions are good with no ground damage being done; grazing residual is higher than target at 4.6 cm.
10. Tail paint is topped up weekly and cows are observed at both milkings, at midday and late in the evenings. We are starting week six of breeding this week and 95% of available cows have been submitted. The 18-24 day non return rate is slightly lower than target at 56%.
11. There are 30 replacement heifer calves weaned out of 41 to date. All calves weaned to date have been 80kg +, last batch averaged 88kg.
12. Lost a cow with grass tetany last week, have started to dust paddocks as prevention as well as meal feeding.
13. Average milk yield is 22.3kg at 4.39% fat and 3.49% protein (1.76kg MS/cow), lactose 4.86%, SCC 129k, TBC 4k.

### C. Critical short term actions :

- Allocating grass in full paddocks.
- 1kg concentrates being fed.
- Keep tail paint topped up.
- Close observation of cows for heat.
- Dusting paddocks.

[www.agresearch.teagasc.ie/moorepark/](http://www.agresearch.teagasc.ie/moorepark/)



