

Ballyhaise Weekly Farm Notes - Monday 09/07/2011

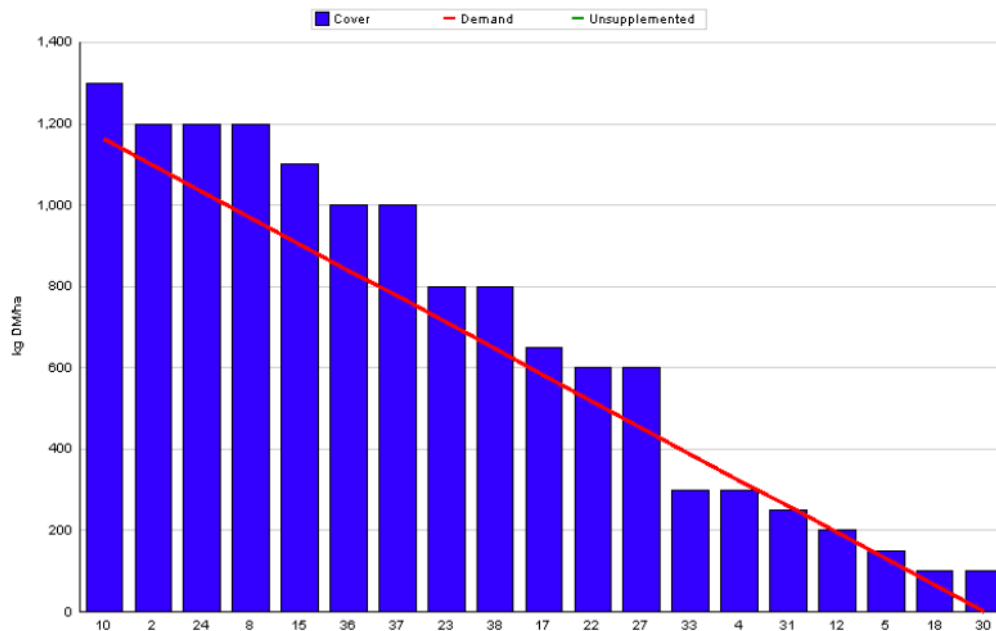
A. Critical Issues

1. Protect soil from poaching.
2. Maintain cow condition.
3. Monitor bull activity.

B. On farm situation

1. Soil temperature today is 14.5°C.
2. Total weekly rainfall is 16mm.
3. Average growth was 58kgDM/ha/day, (13% DM).
4. Feeding 1kg of concentrate.
5. Farm feed wedge (09/07/12).

Rotation Length :	21	Grass Allocation /LU (kg DM/LU) :	16
Number of Cows :	56	Farm Cover (kg DM/ha) :	641
Grass Allocation /cow (kg grass dry matter/LU	16	Farm Cover (kg DM/LU) :	185
Concentrate Fed (kg/cow) :	1		
Silage Fed (kg DM/cow) :	0		
N Application Rate (units/acre) :		Stocking Rate (LU/ha) :	3.46
N Application Rate (kg/ha) :		Growth Rate :	58
Residual Height :	4	Farm Demand (kg DM/ha/day) :	55
Total Livestock (LU) :	56	Target pregrazing yield (kg DM/ha) :	1162



6. Growth rate is similar to last week at 58kg DM / ha which is sufficient to meet demand. Grass quality is still an issue on a number of paddocks which will be earmarked for bale silage as soon as growth rates improve.

7. Total growth for the year to date is 5.1 tons DM / ha which is almost 3 tons DM / ha below this date last year.
8. Farm cover is 641 kg Dm / ha (185 kg DM / LU), and cows are grazing covers of 1300kg DM / ha.
9. A fresh break of grass is allocated after each milking to protect paddocks from poaching. Ground conditions are reasonable but cows are quite unsettled during the heavy showers. If cows are seen bunching they are housed.
10. It has been difficult to get cows to graze down to the target residual of 4cm. The average residual for this week was 4.8 cm.
11. Paddocks 40 and 41 were reseeded on the 28th of May, paddock 41 was sowed with Aston energy and paddock 40 was sowed with Aberchoice. Both were top dressed with 23 units of N and sprayed this week.
12. Herd condition scored on the 25th of June. Herd average was 2.95 with 65% of the herd BCS 3 or higher. There is one cow less than 2.75 and is being milked once a day for the past 3 weeks.
13. There are 37 replacement heifer calves weaned out of 41 to date. All calves weaned to date have been 80kg +, last batch averaged 88kg. Calves were dosed last week and moved to after grass with a cover of 900kg DM / ha. Calves are moved to fresh grass weekly. Feeding 1kg of meal per calf.
14. Bulling heifers were dosed last week for fluke and worms. Bulls will be taken away this week. All heifers got one round of AI and 6 weeks with the stock bull.
15. Production has dropped back again this week with average milk yield of 19.92kg at 4.16% fat and 3.49% protein (1.51kg MS/cow), lactose 4.86%, SCC 138k, TBC 8k. Production per cow to date is 218 kg milk solids.
16. Total feed inputs to date are 340 kg of concentrate per cow and 220 kg DM of silage per cow.

C. Critical short term actions :

- Allocating grass in 12 hr blocks.
- On-off grazing when necessary.
- Close observation of Bull activity.
- Fresh grass to calves weekly.

www.agresearch.teagasc.ie/moorepark/



