

Ballyhaise Weekly Farm Notes - Monday 23/07/2011

A. Critical Issues

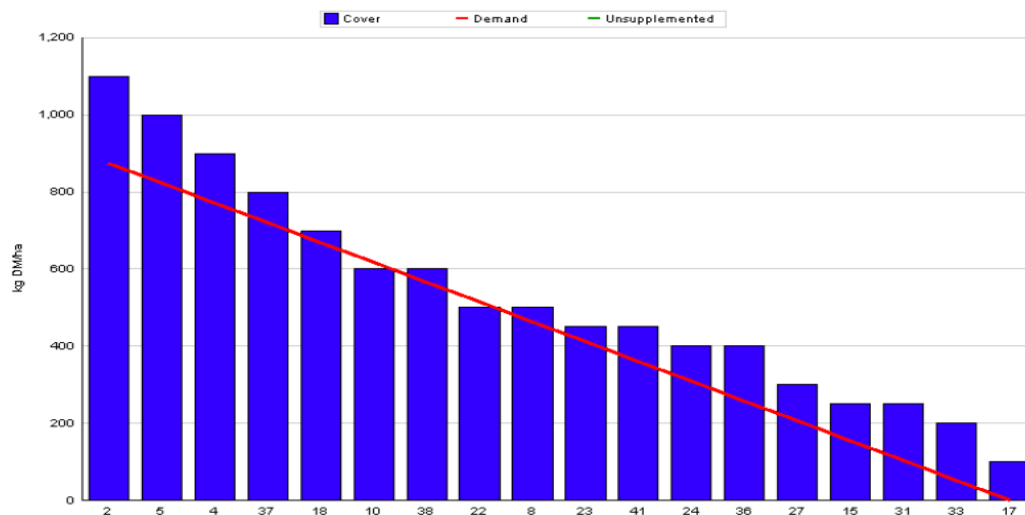
1. Protect soil from poaching.
2. Maintain cow condition.
3. Monitor bull activity.

B. On farm situation

1. Soil temperature today is 16.5°C.
2. Total weekly rainfall is 32.5mm.
3. Average growth was 49kgDM/ha/day, (13% DM).
4. Feeding 2kg of concentrate and 4kg of bale silage.
5. Farm feed wedge (23/07/12).

Moorepark Animal & Grassland Research and Innovation Centre		GrazePlan - Grass Measurement Report	
Group :	TEAGASC RESEARCH FARMS	Ballyhaise calving date and genotype study 2012	Date Produced 25-JUL-12
Farm :	Ballyhaise Farm		
Date :	23-JUL-12	Treatment :	Jersey Fresian crossbred

<table style="width: 100%; border-collapse: collapse;"> <tr><td>Number of Cows :</td><td style="text-align: right;">56</td></tr> <tr><td>Grass Allocation /cow (kg grass dry matter/LU</td><td style="text-align: right;">12</td></tr> <tr><td>Concentrate Fed (kg/cow) :</td><td style="text-align: right;">2</td></tr> <tr><td>Silage Fed (kg DM/cow) :</td><td style="text-align: right;">4</td></tr> <tr><td>N Application Rate (units/acre) :</td><td></td></tr> <tr><td>N Application Rate (kg/ha) :</td><td></td></tr> <tr><td>Residual Height :</td><td style="text-align: right;">4</td></tr> <tr><td>Total Livestock (LU) :</td><td style="text-align: right;">56</td></tr> </table>	Number of Cows :	56	Grass Allocation /cow (kg grass dry matter/LU	12	Concentrate Fed (kg/cow) :	2	Silage Fed (kg DM/cow) :	4	N Application Rate (units/acre) :		N Application Rate (kg/ha) :		Residual Height :	4	Total Livestock (LU) :	56	<table style="width: 100%; border-collapse: collapse;"> <tr><td>Grass Allocation /LU (kg DM/LU) :</td><td style="text-align: right;">12</td></tr> <tr><td>Farm Cover (kg DM/ha) :</td><td style="text-align: right;">495</td></tr> <tr><td>Farm Cover (kg DM/LU) :</td><td style="text-align: right;">143</td></tr> <tr><td>Stocking Rate (LU/ha) :</td><td style="text-align: right;">3.47</td></tr> <tr><td>Growth Rate :</td><td style="text-align: right;">49</td></tr> <tr><td>Farm Demand (kg DM/ha/day) :</td><td style="text-align: right;">42</td></tr> <tr><td>Target pregrazing yield (kg DM/ha) :</td><td style="text-align: right;">875</td></tr> </table>	Grass Allocation /LU (kg DM/LU) :	12	Farm Cover (kg DM/ha) :	495	Farm Cover (kg DM/LU) :	143	Stocking Rate (LU/ha) :	3.47	Growth Rate :	49	Farm Demand (kg DM/ha/day) :	42	Target pregrazing yield (kg DM/ha) :	875
Number of Cows :	56																														
Grass Allocation /cow (kg grass dry matter/LU	12																														
Concentrate Fed (kg/cow) :	2																														
Silage Fed (kg DM/cow) :	4																														
N Application Rate (units/acre) :																															
N Application Rate (kg/ha) :																															
Residual Height :	4																														
Total Livestock (LU) :	56																														
Grass Allocation /LU (kg DM/LU) :	12																														
Farm Cover (kg DM/ha) :	495																														
Farm Cover (kg DM/LU) :	143																														
Stocking Rate (LU/ha) :	3.47																														
Growth Rate :	49																														
Farm Demand (kg DM/ha/day) :	42																														
Target pregrazing yield (kg DM/ha) :	875																														



6. There has been more heavy rain this week and ground conditions have deteriorated again after last week's improvement. This has affected growth rate which has dropped back to 49 kg DM / ha. Pre-grazing covers are too low and supplement feed has been introduced to reduce demand and give covers a chance to increase.

7. Cows are being fed 2kg of concentrate and 4kg DM of bale silage per day to reduce demand. We were concerned that a combination of heavy rainfall, low dry matter grass and low covers was affecting cow intakes during the early part of the week. Growth rates should improve over the next few days with dryer weather and higher temperatures forecast for the weekend. If pre-grazing covers rise to 1300kg DM / ha then silage will be removed. Cows are being brought in 2 hours before evening milking and are fed silage at the feed barrier of the pad. These are high quality bales made in May of this year.
8. Farm cover is 495 kg Dm / ha (143 kg DM / LU), and cows are grazing covers of 1050kg DM / ha.
9. A fresh break of grass is allocated after each milking to protect paddocks from poaching. Day allocations are smaller to allow for silage feeding
10. Paddocks 40 and 41 were reseeded on the 28th of May, paddock 41 was sowed with Aston energy and paddock 40 was sowed with Aberchoice.
11. Herd condition scored last Friday. Herd average was 2.88 with 49% of the herd BCS 3 or higher.
12. All 41 replacement heifer calves were weighed last week. The majority of these calves are crossbred and will have a mature weight of 500kg. The target is to have these calves at 150kg by six months old (mid August). There were 28 calves above 120kg (average 138 kg) and 13 calves below 120kg (average 105kg). Most of these light calves were April born. They have been separated and will be fed 2 kg ration. All calves are being grazed on reseeded paddocks and are moved twice a week.
13. Bulk tank SCC has increased to 190,000 this week, 4 problem cows have been identified and will be CMT tested this week. There have been no clinical cases of mastitis in the last 6 weeks.
14. Production per cow this week was 18.06kg at 4.39% fat and 3.49% protein (1.41kg MS/cow), lactose 4.86%, SCC 190k, TBC 5k.

C. Critical short term actions :

- Allocating grass in 12 hr blocks.
- Feeding concentrate and bale silage.
- Close observation of Bull activity.
- Fresh grass to calves twice weekly.
- Feeding smaller calves separately.

www.agresearch.teagasc.ie/moorepark/



The herd has been split into two distinct breed groups since May 2012.

Genetics 2012	Fr	Crossbred
EBI	142	148
Milk sub index	46	46
Fertility sub index	90	91
Milk kg	72	-26
Fat Kg	10	9
Fat %	0.14	0.2
Prot Kg	7	5.5
Prot %	0.09	0.13
Age profile (lactations)	3	2.7
Week:17/07/12	Fr	Crossbred
Stocking rate (cows/ha)	2.9	3.15
Milk yield (kg/cow/day)	18.23	17.9
% Fat	4.18	4.60
% Protein	3.43	3.56
% Lactose	4.72	4.75
Milk solids (kg/cow/day)	1.37	1.45
Supplement (kg/cow/day)		
Concentrate	0.5	0.5
Silage	0	0
Cumulative		
Milk yield (kg/cow)	3043	2943
% Fat	4.44	4.58
% Protein	3.45	3.53
% Lactose	4.84	4.89
Milk solids (kg/cow)	239	238
SCC	274,000	92,000
Body Condition Score	2.87	2.88
Supplement (kg/cow)		
Concentrate	347	350
Silage to milking cows (kg DM/cow)	220	210
Conserved silage (kg DM/cow)	130	140
Sires	RUU, HZO, UYC TZD, CWJ, SBH	WAS, CJY, GHK KLK, ULK

* These are raw data and have not been statistically analysed.