

## Ballyhaise Weekly Farm Notes - Monday 09/10/2012

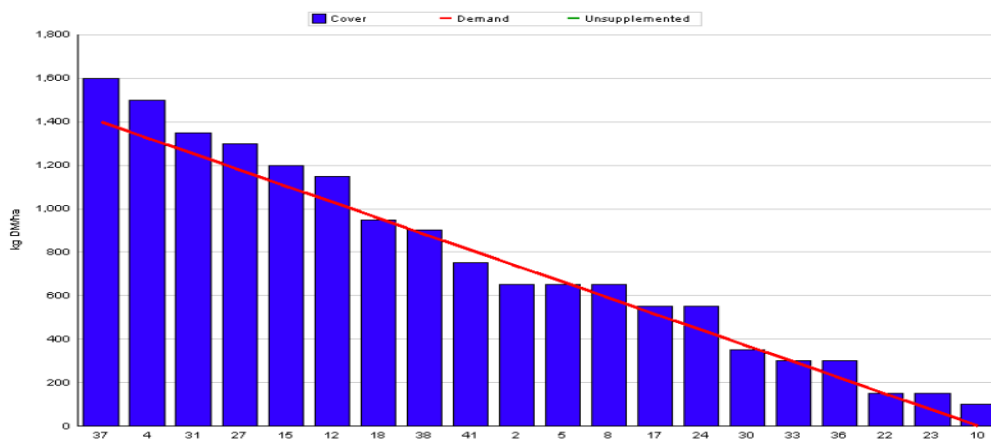
### A. Critical Issues

1. Feed supplements to increase grass cover.
2. Maintain cow condition.
3. Keep young stock moved regularly.

### B. On farm situation

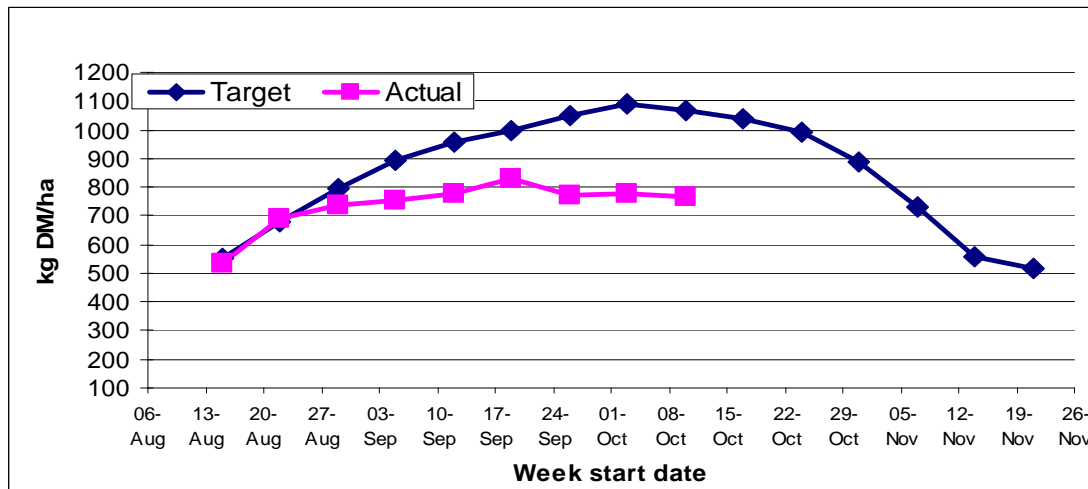
1. Soil temperature today is 10°C.
2. Total rainfall over the past seven days was 27mm.
3. Average growth was 23kgDM/ha/day, (14% DM).
4. Feeding 3kg of concentrate and 3kg DM of bale silage.
5. Farm feed wedge (09/10/12).

Moorepark Animal & Grassland Research and Innovation Centre		GrazePlan - Grass Measurement Report	
Group : TEAGASC RESEARCH FARMS	Ballyhaise calving date and genotype study 2012	Date Produced	11-OCT-12
Farm : Ballyhaise Farm			
Date : 09-OCT-12	Treatment :		Jersey Fresian crossbred
Rotation Length :	45	Grass Allocation /LU (kg DM/LU) :	10
Number of Cows :	56	Farm Cover (kg DM/ha) :	766
Grass Allocation /cow (kg grass dry matter/LU)	10	Farm Cover (kg DM/LU) :	246
Concentrate Fed (kg/cow) :	3		
Silage Fed (kg DM/cow) :	3		
N Application Rate (units/acre) :		Stocking Rate (LU/ha) :	3.11
N Application Rate (kg/ha) :		Growth Rate :	23
Residual Height :	4	Farm Demand (kg DM/ha/day) :	31
Total Livestock (LU) :	56	Target pregrazing yield (kg DM/ha) :	1398



6. Farm cover is 785 kg DM / ha (253 kg DM / cow) which is similar to last week. Pre-grazing cover is 1500 kg DM / ha. We have been feeding 6kg of silage and 3kg of concentrate over the last week to hold farm cover
7. Grazing conditions have improved over the past 4 days as rainfall amounts have been small. Soil temperature is 10°C and rainfall over the last 7 days was 22mm. Growth rates are below normal for this time of year with average growth rate for the farm of 23kg DM / ha per day.

## 8. Autumn Budget



9. The graph above shows the target farm cover for each week over the autumn period. The target is to reach a peak average farm cover of 1100 kg DM / ha on the first week of October. The target closing cover is 500 kg DM / ha.
10. We started to close paddocks on the first of October and 15% of the farm is closed to date. Silage will be removed for the next 4 days to speed up rotation in order to have 60% of the farm closed by the 25<sup>th</sup> of October. The main focus is to set the farm up for early grazing next spring.
11. Grass is being allocated in 12 hour blocks to help maintain a good grazing residual. The average residual on the paddocks grazed this week was 4.1 cm.
12. In-calf heifers were weighed in mid September; they averaged 381kg which is on target. These are predominantly jersey crossbred animals with a mature live weight of 500kg. They will be housed this week to reduce grass demand. There are 10 heifers which will be sold to reduce winter feeding demand as they are surplus to requirement.
13. The big batch of 25 heifer calves were dosed and weighed on the 27<sup>th</sup> of September, they averaged 188kg and gained 1.03 kg per day over the previous 4 weeks. The smaller batch of 15 calves is due to be moved this week and will be dosed and weighed.
14. Out-wintering pad has been re-chipped in preparation for winter. Four loads of chip were used costing €725 per load. Lagoon is empty but there is still some slurry in cubicle shed that will have to be spread when ground conditions improve.
15. Full herd scan was done on the 30<sup>th</sup> of August. There were 8 cows empty out of 114 cows milking (7%) over a 13 week breeding season. The six week in-calf rate was 71% (81 cows); these are due to calve before the 22<sup>nd</sup> of March next year. There was one heifer empty out of 35 (3%) over a seven week breeding period. There are 25 heifers in-calf to first service (71%) and the rest were

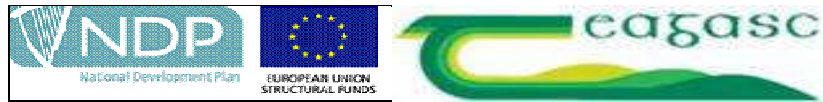
served with the stock bull. This is a total of 140 cows and heifers scanned in calf for next spring which will give us scope to do some voluntary culling.

16. Production per cow this week was 11.36kg at 5.25% fat and 3.82% protein (1.03 kg MS/cow), lactose 4.37%, SCC 248k, TBC 9k.

**C. Critical short term actions :**

- Allocating grass in 12 hr blocks.
- Graze 3% of the farm per day.
- Dose and move calves.

[www.agresearch.teagasc.ie/moorepark/](http://www.agresearch.teagasc.ie/moorepark/)



The herd is split on the bases of cow breed with 60 pure Friesian cows in one group and 56 crossbred cows in the other group.

<b>Genetics 2012</b>	<b>Fr</b>	<b>Crossbred</b>
<b>EBI</b>	<b>142</b>	<b>148</b>
Milk sub index	46	46
Fertility sub index	90	91
Milk kg	72	-26
Fat Kg	10	9
Fat %	0.14	0.2
Prot Kg	7	5.5
Prot %	0.09	0.13
Age profile ( lactations)	3	2.7

<b>Fertility 2012</b>	<b>Fr</b>	<b>Crossbred</b>
<b>EBI</b>	<b>142</b>	<b>148</b>
Fertility sub index	90	91
24 day Submission rate (%)	90	91
Pregnancy rate to 1 <sup>st</sup> service (%)	48	56
42 day in-calf rate (%)	73	69
Straws per cow	1.75	1.74
13 week empty rate (%)	5	7

<b>Week:09/10/12</b>	<b>Fr</b>	<b>Crossbred</b>
<b>Stocking rate (cows/ha)</b>	<b>2.9</b>	<b>3.15</b>
Milk yield (kg/cow/day)	10.8	11.36
% Fat	4.97	5.37
% Protein	3.84	4.06
% Lactose	4.37	4.35
Milk solids (kg/cow/day)	0.94	1.07
Supplement (kg/cow/day)		
Concentrate	3	3
Silage	6	6
<b>Cumulative</b>		
Milk yield (kg/cow)	4262	4085
% Fat	4.62	4.68
% Protein	3.50	3.63
% Lactose	4.75	4.80
Milk solids (kg/cow)	337	339
SCC	135,000	111,000
Body Condition Score	2.91	2.85
Supplement (kg/cow)		
Concentrate	653	647
Silage to milking cows (kg DM/cow)	340	346
Conserved silage (kg DM/cow)	130	140
Sires	RUU, HZO, UYC TZD, CWJ, SBH	WAS, CJY, GHK KLK, ULK

**\* These are raw data and have not been statistically analysed.**