

**A. Critical Issues**

1. Build covers.
2. Use strip wire to maintain residual.
3. Split out small in-calf heifers.

**B. 2013 Calving date trial**

- The herd is split into two separate calving dates
- Early calving group – mean calving date is the 25<sup>th</sup> of Feb.
- Late calving group – mean calving date is the 10<sup>th</sup> of March.
- Stocking rate is 2.9 cows per ha for both groups and fertiliser input will be constant (250Kg N / ha).
- Within each group there are equal numbers of Friesian and crossbred cows

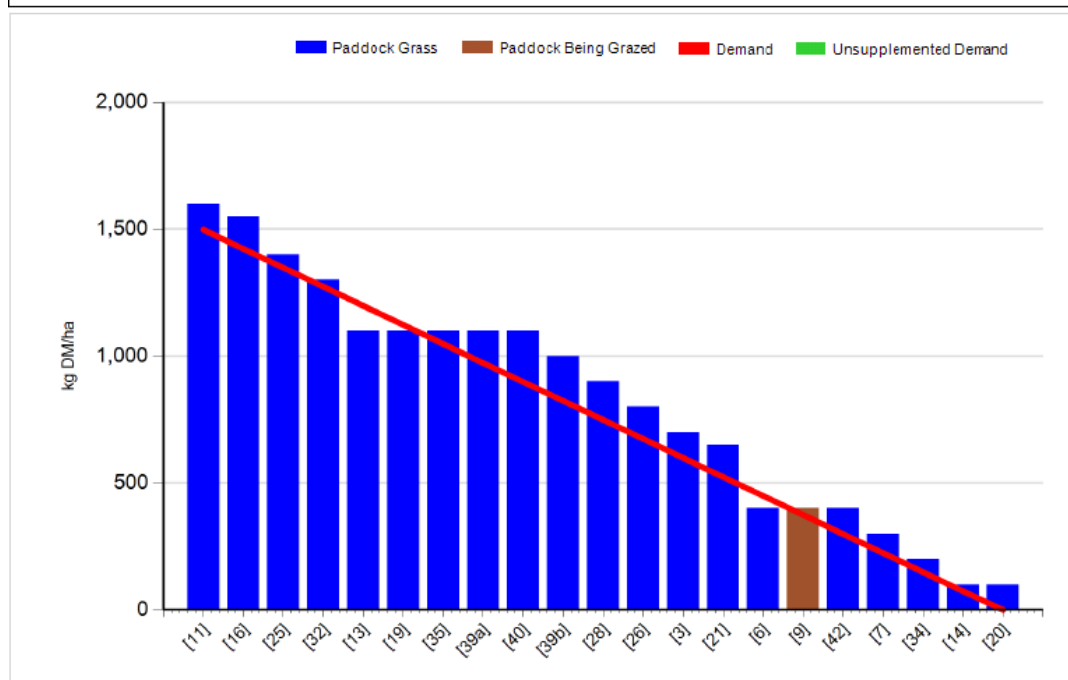
**C. Whole farm situation**

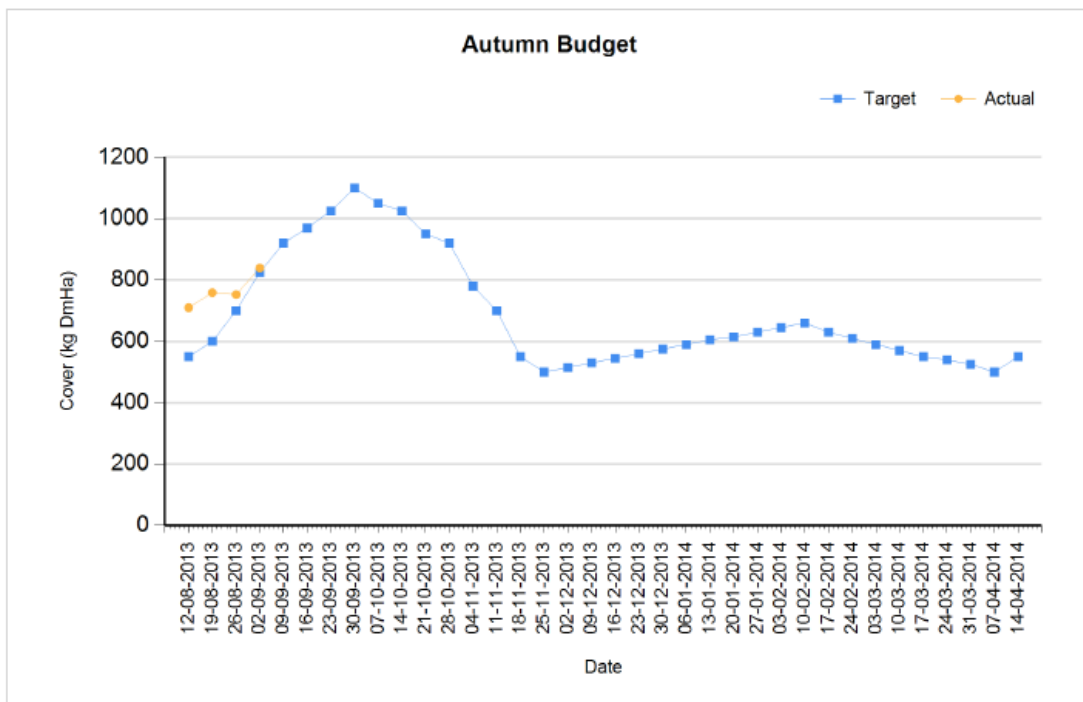
1. Soil temperature today is 16°C.
2. Total rainfall over the past seven days was 4mm.
3. Average growth was 65kgDM/ha/day, (16% DM).
4. Rotation length 32 days.
5. Feed wedge 02/09/2013

Rotation Length (days):	32	Silage Fed (kg DM/cow):	0.0
Grass Allocation/Cow (kg DM/cow):	15.0	Residual Height (cm):	3.5
No. of Cows:	60		
Concentrate Fed (kg/cow):	1.0		

**Cover Parameters**

Grass Allocation/LU (kg DM/LU):	15.0	Growth Rate (kg/ha/day):	65
Total Livestock (LU):	60.0	Farm Demand (kg DM/ha/day):	47
Farm Cover (kg DM/ha):	839	Target Pre-grazing yield (kg DM/ha):	1498
Farm Cover (kg DM/LU):	269		
Stocking Rate (LU/ha):	3.12		





6. Farm cover is 839 kg DM / ha (269 kg DM / cow) and pre-grazing cover is 1600 kg DM / ha. Three paddocks were cut out for silage as AFC was 950kg DM / ha which was well ahead of target. Our target is to be at a farm cover of 950kg DM / ha which should be possible given current growth and demand.
7. Pre grazing yield is 1600 kg DM / ha and we are allocating fresh grass every 24 hours.
8. Total N spread to date is 213 kg N / ha, a further 35 kg will be bulk spread on the whole farm over the next two weeks.
9. Total growth to date is 9.3 tons DM / ha.
10. Heifer calves were dosed with a levamisol based injection and moved to after grass.
11. In-calf heifers were weighed last week; the average weight gain was 0.6kg / day which is behind target. Average weight of the Fr heifers is 393kg which is slightly behind target. Average weight of the cross bred heifers is 370kg which is on target. Even though average weights are close to target 40% of animals are below target weight and will be split from the main group and grazed ahead to help catch up.
12. Cows and heifers were scanned this week. The empty rate in the cows after 12 weeks of breeding was 9%. Pregnancy rate to first service was 51% and 6 week pregnancy rate was 76%. Heifer empty rate was 10% over 7 week breeding period with 72% conception to 1<sup>st</sup> service AI and the remainder in-calf to jersey stock bulls. There are 145 animals scanned in-calf for next year so will have 20 surplus animals to sell.

### C. Bulk tank details :

Milk yield 16.1kg, Fat 4.67%, Protein 3.55% (1.32kg MS) SCC 207,000, TBC 67,000.

Date : 01/09/2013 Mean calving date	Early 25 <sup>th</sup> Feb		Late 10 <sup>th</sup> March	
	FR	JFX	FR	JFX
<b>Stocking rate (cows/ha)</b>	<b>2.9</b>	<b>2.9</b>	<b>2.9</b>	<b>2.9</b>
Milk yield (kg/cow/day)	17.2	14.7	17.0	14.8
% Fat	4.22	4.57	4.23	4.46
% Protein	3.51	3.80	3.55	3.70
% Lactose	4.62	4.66	4.66	4.64
Milk solids (kg/cow/day)	1.33	1.23	1.32	1.20
Supplement (kg/cow/day)				
Concentrate	1	1	1	1
Silage	0	0	0	0
<b>Cumulative</b>				
Milk yield (kg/cow)	4,070	3,765	3,668	3,338
% Fat	4.44	4.65	4.52	4.72
% Protein	3.39	3.64	3.47	3.55
% Lactose	4.74	4.77	4.76	4.77
Milk solids (kg/cow)	319	312	293	276
Weight	505	456	523	455
Body Condition Score	2.79	2.88	2.75	2.80
% Calved	100	100	100	100
Supplement (kg/cow)				
Concentrate		660		542
Silage to milking cows (kg DM/cow)		330		180
Conserved silage (kg DM/cow)		576 (48%)		605 (50%)

\* These are raw data and have not been statistically analysed.