

**A. Critical Issues**

1. Ensuring new born calves get 3L of colostrum within the first 2 hours of birth and keeping calving pens as hygienic as possible.
2. Getting cows out to grass for a minimum of 3 hours after each milking.
3. Get fertiliser out.

**B. 2014 Calving date trial**

- The herd is split into two separate calving dates
- Early calving group – mean calving date is the 25<sup>th</sup> of Feb.
- Late calving group – mean calving date is the 10<sup>th</sup> of March.
- Within each group there are equal numbers of Friesian and crossbred cows.

**C. Whole farm situation**

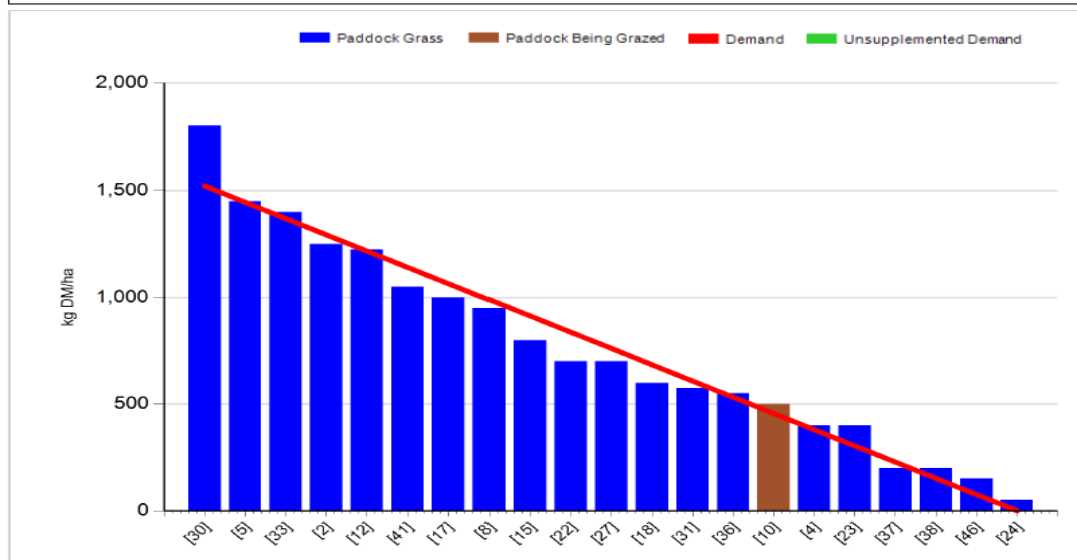
- Soil temperature today is 6.3°C.
- Total rainfall over the past seven days was 24mm.
- Heifers weighed that are due to be served in early May. The target for the Friesian heifers was 290kgs and the average weight was 299kgs. The target for the Jersey Friesian cross heifers was 265kgs and the average weight was 285kgs.
- First milk sent at the end of last week, cows averaging 18.3kg at 4.43 fat, 3.67 prot, 264,000 SCC and 10,000 TBC.
- Total of 60 cows calved and have 33 replacement heifer calves to date.
- No dead calves to date.
- 3 cows assisted to calve.
- 4 Cows slow to clean.
- 1 Case of Mastitis to date.

**D. Early group**

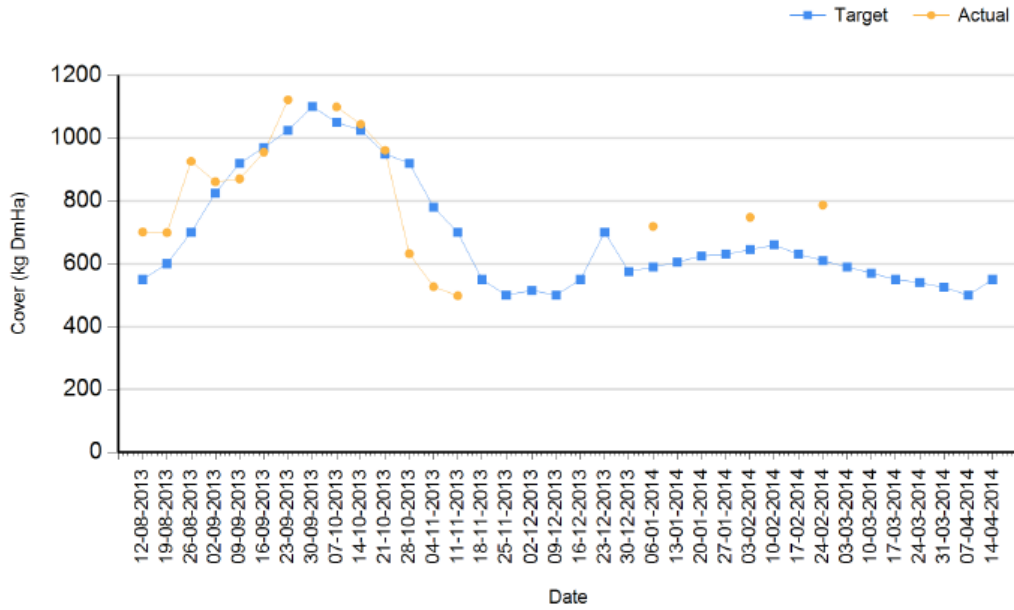
Rotation Length (days):	89	Silage Fed (kg DM/cow):	
Grass Allocation/Cow (kg DM/cow):	9.0	Residual Height (cm):	3.5
No. of Cows:	36		
Concentrate Fed (kg/cow):	3.0		

**Cover Parameters**

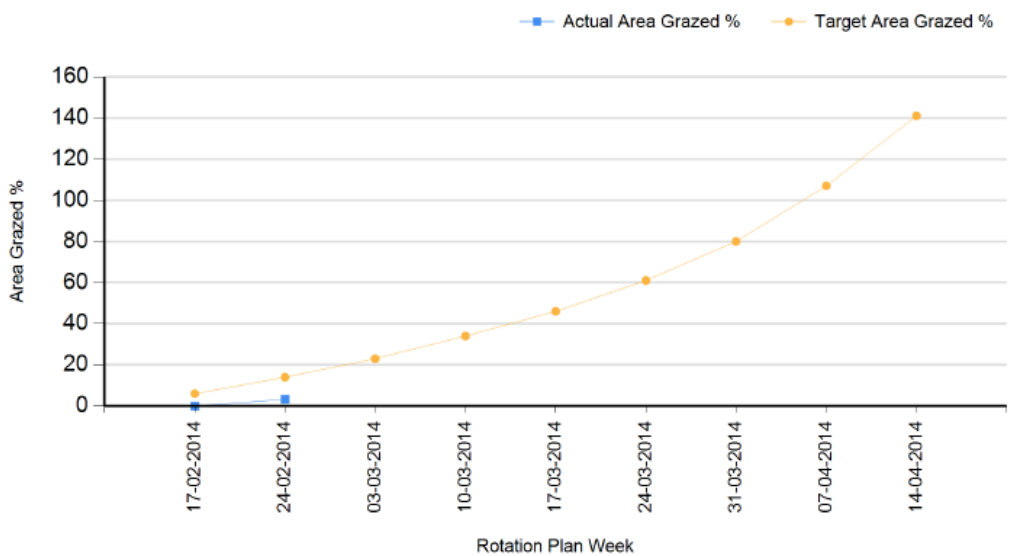
Grass Allocation/LU (kg DM/LU):	9.0	Growth Rate (kg/ha/day):	5
Total Livestock (LU):	36.0	Farm Demand (kg DM/ha/day):	17
Farm Cover (kg DM/ha):	787	Target Pre-grazing yield (kg DM/ha):	1522
Farm Cover (kg DM/LU):	414		
Stocking Rate (LU/ha):	1.90		



### Spring Budget



### Spring Rotation Plan



1. Farm cover is 787 kg DM / ha and pre-grazing cover is 1200 kg DM / ha.
2. Growth rate is 5 kg DM / ha and demand is 17 kg DM / ha.
3. Cover is ahead of target according to the spring budget.
4. We are avoiding grazing high covers in order to prevent poaching we are leaving these high covers until the stocking rate increases and the weather improves.
5. Cows are on-off grazing with no silage in the diet.
6. We only have 2 paddocks grazed and are behind our target area grazed.

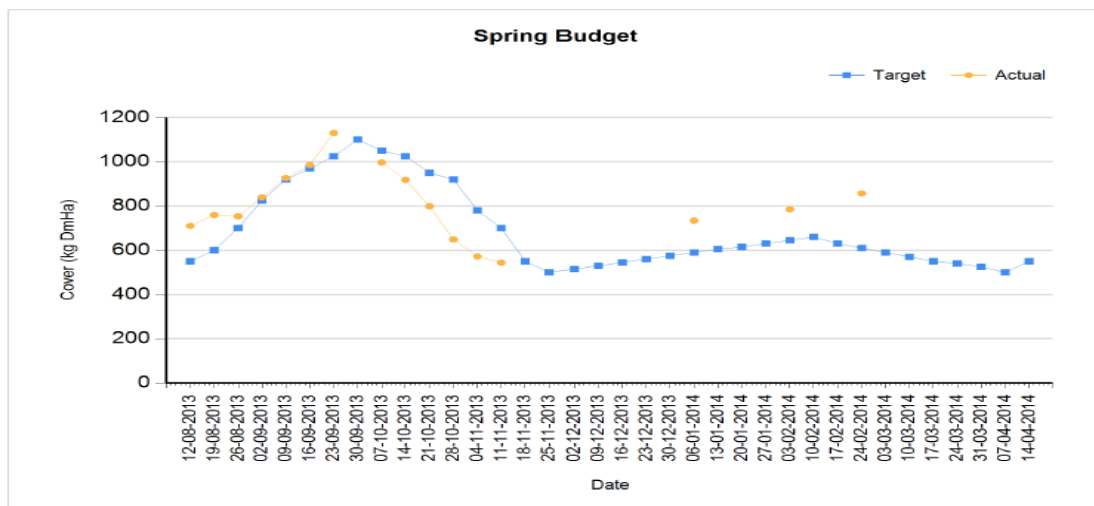
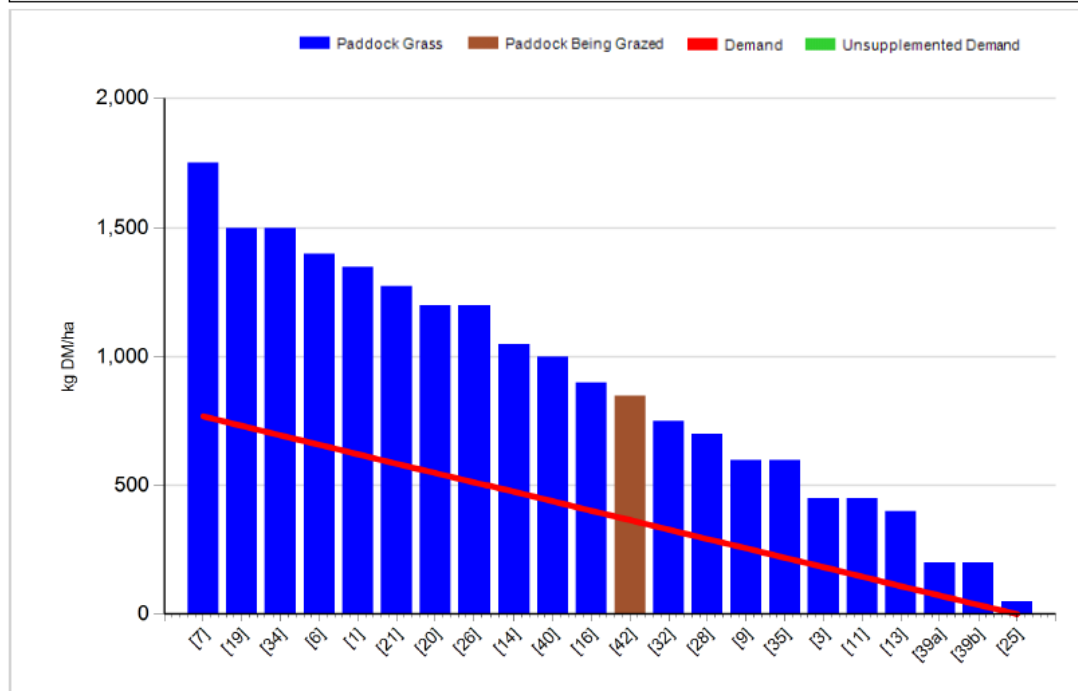
7. Some poaching damage done but nothing serious.
8. Feeding 3 kg of concentrate and 9 kg of grass.
9. 63% calved to date.

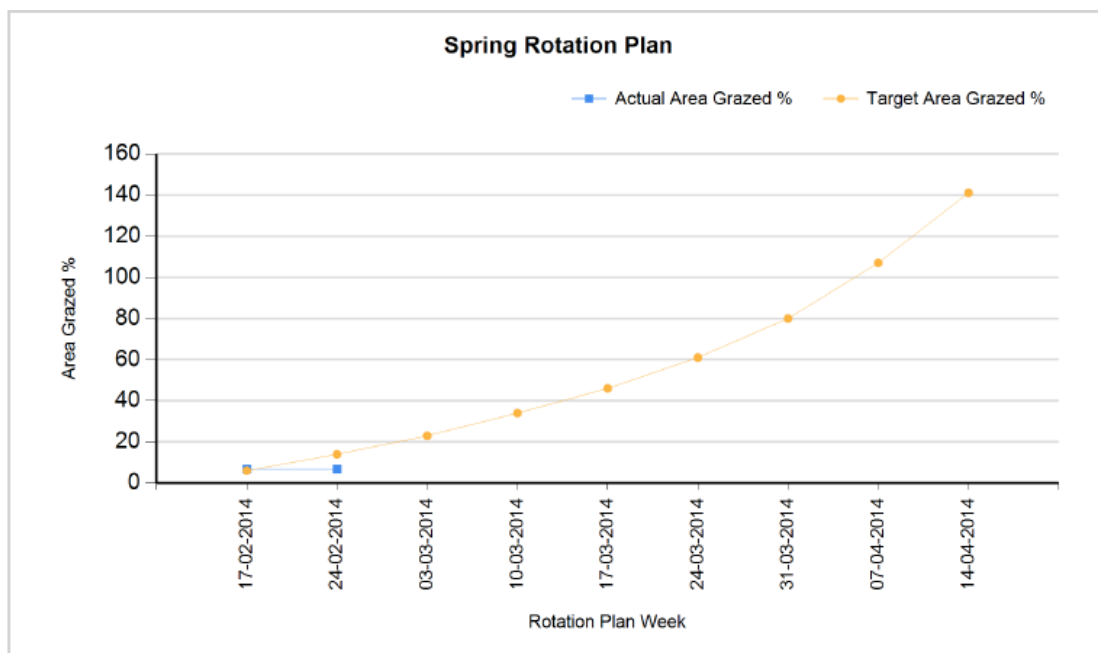
### C. Late Group

Rotation Length (days):	89	Silage Fed (kg DM/cow):	
Grass Allocation/Cow (kg DM/cow):	9.0	Residual Height (cm):	3.5
No. of Cows:	19		
Concentrate Fed (kg/cow):	3.0		

#### Cover Parameters

Grass Allocation/LU (kg DM/LU):	9.0	Growth Rate (kg/ha/day):	5
Total Livestock (LU):	19.0	Farm Demand (kg DM/ha/day):	9
Farm Cover (kg DM/ha):	857	Target Pre-grazing yield (kg DM/ha):	769
Farm Cover (kg DM/LU):	893		
Stocking Rate (LU/ha):	0.96		





1. Farm cover is 857 kg DM / ha and pre-grazing cover is 1200 kg DM / ha.
2. Growth rate is 5 kg DM / ha and demand is 9 kg DM / ha.
3. Cows out day and night, on-off grazing.
4. Feeding 3kg of concentrate and 8kg of grass.
5. Will continue to graze 1200 covers to catch up on area grazed.

#### **D. Critical short term actions :**

- Remove cows from paddocks after 3 hours to prevent poaching.
- Get ½ bag of urea out on dry paddocks this week.
- Graze lighter covers until weather conditions improve.

[www.agresearch.teagasc.ie/moorepark/](http://www.agresearch.teagasc.ie/moorepark/)

