

A. Critical Issues

1. Start second rotation.
2. Continue to avoid poaching by use of 12hr blocks.
3. Get fertiliser out this week.
4. Graze wetter paddocks as ground conditions allow.

B. 2014 Calving date trial

- The herd is split into two separate calving dates
- Early calving group – mean calving date is the 25th of Feb.
- Late calving group – mean calving date is the 10th of March.
- Within each group there are equal numbers of Friesian and crossbred cows.

C. Whole farm situation

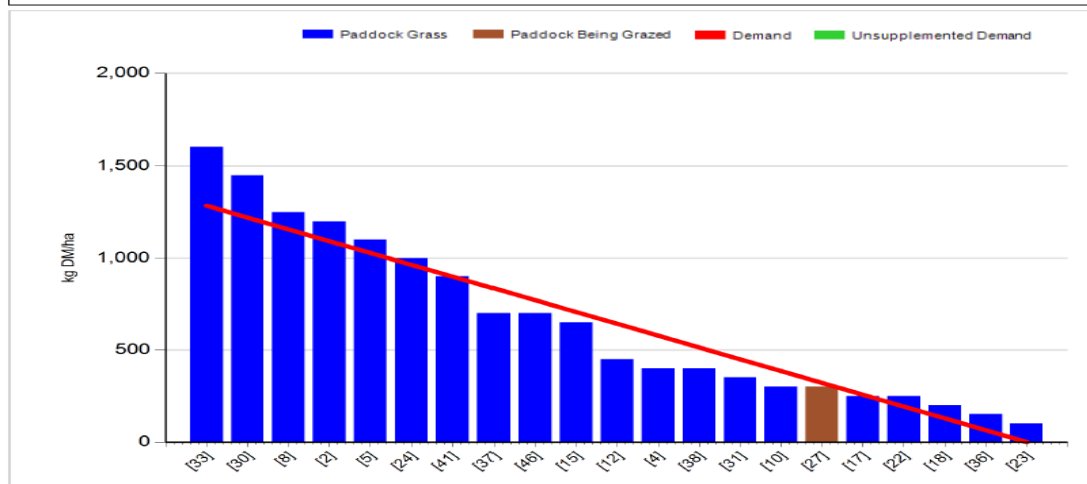
- Soil temperature today is 11.5°C.
- Will go with 46 units of urea over whole farm this week, we only got about 25% of this done last week but ground conditions were too wet.
- Whole herd condition scored, average 2.85 with 10% below 2.75. Cows below target now on once a day milking.
- Total of 109 cows calved and have 53 replacement heifer calves to date.
- 5 dead calves to date.
- 6 cows assisted to calve.
- 4 Cows slow to clean.
- 1 Case of Mastitis to date.
- Bulling heifer weighed last week, Friesians are 337kg and crossbreds are 319 kg. Will start serving on the 1st of May.
- Milk yield 24.1kg, 4.34% fat, 3.23% protein (1.82kg Ms / cow), SCC 142,000 and TBC 4,000.

D. Early group

Rotation Length (days):	28	Silage Fed (kg DM/cow):	
Grass Allocation/Cow (kg DM/cow):	15.0	Residual Height (cm):	3.5
No. of Cows:	58		
Concentrate Fed (kg/cow):	1.0		

Cover Parameters

Grass Allocation/LU (kg DM/LU):	15.0	Growth Rate (kg/ha/day):	42
Total Livestock (LU):	58.0	Farm Demand (kg DM/ha/day):	46
Farm Cover (kg DM/ha):	678	Target Pre-grazing yield (kg DM/ha):	1285
Farm Cover (kg DM/LU):	222		
Stocking Rate (LU/ha):	3.06		



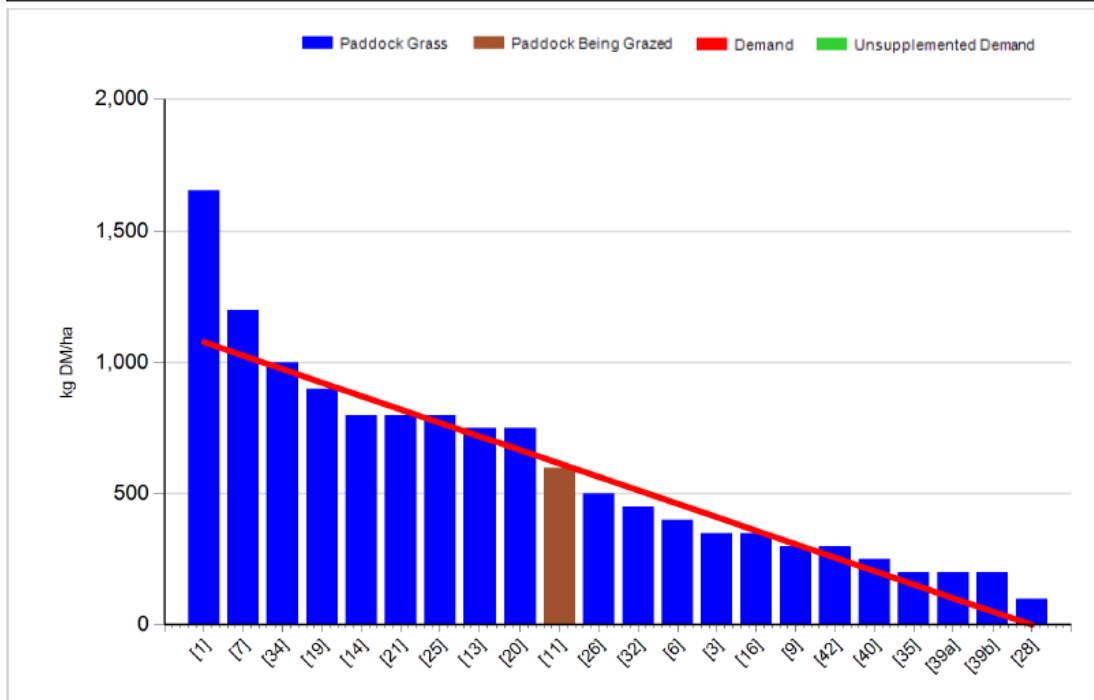
1. Farm cover is 678 kg DM / ha which is similar to last week. Cows were housed at night for 3 nights last week as remaining paddocks in first rotation were too wet to graze.
2. Growth rate has increased this week to 42kg DM / ha and demand is 46kg DM / ha. Concentrates have been reduced to 1kg to utilise the first few paddock on the wedge which are above the demand line, we can increase this again towards the end of the week if we think growth has slowed.
3. There are 3 paddocks of first rotation grass left but these are too wet to graze, the next paddock on the wedge is 33 which was grazed on the 3rd of March and has a cover of 1550kg DM / ha.
4. Grazing down to 3.8cm on average. Post grazing on some paddocks was above target as cows had to be removed to prevent poaching.

C. Late Group

Rotation Length (days):	28	Silage Fed (kg DM/cow):	0.0
Grass Allocation/Cow (kg DM/cow):	15.0	Residual Height (cm):	3.5
No. of Cows:	51		
Concentrate Fed (kg/cow):	1.0		

Cover Parameters

Grass Allocation/LU (kg DM/LU):	15.0	Growth Rate (kg/ha/day):	34
Total Livestock (LU):	51.0	Farm Demand (kg DM/ha/day):	39
Farm Cover (kg DM/ha):	542	Target Pre-grazing yield (kg DM/ha):	1079
Farm Cover (kg DM/LU):	211		
Stocking Rate (LU/ha):	2.57		



1. Farm cover is 542 kg DM / ha which has increased from 516kg DM / ha last week.
2. Growth rate is 34kg DM / ha and demand is 39kg DM / ha.
3. Cows were housed for 5 nights to stick to rotation plan.
4. Similar to the early group concentrates have been reduced to 1kg to increase demand.
5. There are 2 paddocks of first rotation grass left but these are too wet to graze so we have started the second rotation. Paddock 1 was grazed on the 28th of Feb and has a cover of 1600kg DM / ha.
6. Grazing out to 3.6cm on average.

D. Critical short term actions :

- Bulk spread 46 units of Urea on whole farm.
- Reduce concentrates to 1kg.
- Cows with condition score below 2.75 milked once a day.
- Get heifers out to grass.

www.agresearch.teagasc.ie/moorepark/

