

A. Critical Issues

1. 36 hour allocations.
2. Maintain target residual (4cm).
3. Reach target 21 day submission rate of 90%.

B. 2014 Calving date trial

- The herd is split into two separate calving dates
- Early calving group – mean calving date is the 25th of Feb.
- Late calving group – mean calving date is the 10th of March.
- Within each group there are equal numbers of Friesian and crossbred cows.

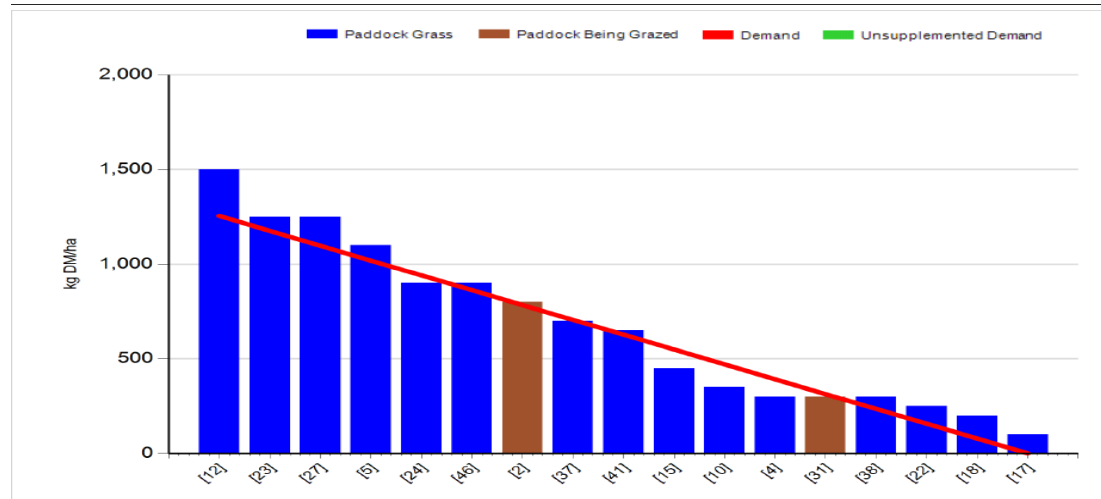
C. Whole farm situation

- Soil temperature today is 12.5°C.
- On the third round of Nitrogen (27 units of sul-CAN).
- Pre-breeding scan done, one G3 cow to be washed out, 12 G2 cows to be washed out, no CIDRs or other treatments needed.
- Milk yield 26.1kg, 4.11% fat, 3.53% protein (2kg Ms / cow), SCC 117,000 and TBC 22,000.

D. Early group

Rotation Length (days):	21	Silage Fed (kg DM/cow):	
Grass Allocation/Cow (kg DM/cow):	15.0	Residual Height (cm):	3.5
No. of Cows:	60		
Concentrate Fed (kg/cow):	2.0		

Cover Parameters			
Grass Allocation/LU (kg DM/LU):	15.0	Growth Rate (kg/ha/day):	76
Total Livestock (LU):	60.0	Farm Demand (kg DM/ha/day):	60
Farm Cover (kg DM/ha):	636	Target Pre-grazing yield (kg DM/ha):	1254
Farm Cover (kg DM/LU):	160		
Stocking Rate (LU/ha):	3.98		



1. Farm cover is 636 kg DM / ha which has increased since last week.
2. Growth rate has jumped to 76kg DM / ha this week. Farm demand is 60 Kg DM / ha as we have closed up 25% of area for silage. Paddocks closed for silage have been topped up with 30 units of CAN. We will close more ground for silage if the cover per cow rises above 180Kg DM / cow.

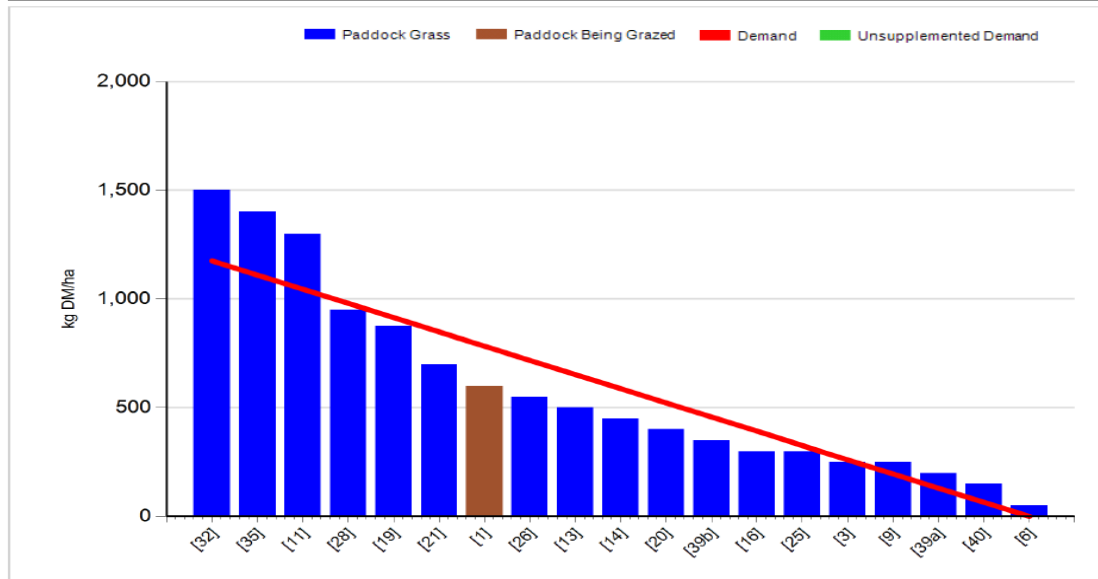
3. Grazing down to 4.2cm on average.
4. Started AI on the 28th of April.

C. Late Group

Rotation Length (days):	21	Silage Fed (kg DM/cow):	0.0
Grass Allocation/Cow (kg DM/cow):	16.0	Residual Height (cm):	3.5
No. of Cows:	59		
Concentrate Fed (kg/cow):	1.0		

Cover Parameters

Grass Allocation/LU (kg DM/LU):	16.0	Growth Rate (kg/ha/day):	69
Total Livestock (LU):	59.0	Farm Demand (kg DM/ha/day):	56
Farm Cover (kg DM/ha):	572	Target Pre-grazing yield (kg DM/ha):	1176
Farm Cover (kg DM/LU):	163		
Stocking Rate (LU/ha):	3.50		



1. Farm cover is 572 kg DM / ha which has increased from 541kg DM / ha last week.
2. Growth rate was 69kg DM / ha and demand is 56kg DM / ha.
3. 15% of the farm has been closed for silage, more will be closed when cover per cow rises above 180kg DM / cow.
4. Pre – grazing yield is slightly high on the next two paddocks but they are not suitable for silage so will have to be grazed.
5. Grazing out to 4.1cm on average.
6. Ai due to start on the 12th of May.

D. Critical short term actions :

- Wash out dirty cows.
- Focus on good heat detection.
- Top up silage paddocks with 30 units of N.

www.agresearch.teagasc.ie/moorepark/



Date : 27/04/2014 Mean calving date	Early 25th Feb		Late 10th March	
	FR	JFX	FR	JFX
Stocking rate (cows/ha)	2.9	2.9	2.9	2.9
Milk yield (kg/cow/day)	27.1	25.1	28.2	26.4
% Fat	4.05	4.26	4.21	4.28
% Protein	3.51	3.64	3.58	3.60
% Lactose	4.93	4.99	4.90	4.90
Milk solids (kg/cow/day)	2.05	1.99	2.20	2.08
Supplement (kg/cow/day)				
Concentrate	1	1	1	1
Silage	0	0	0	0
Cumulative				
Milk yield (kg/cow)	1,554	1,455	1,210	1,196
% Fat	4.10	4.33	4.52	4.33
% Protein	3.19	3.34	3.37	3.34
% Lactose	5.01	5.06	4.93	5.06
Milk solids (kg/cow)	113	112	95	94
Weight	468	443	500	439
Body Condition Score	2.86	2.96	2.80	2.81
Supplement (kg/cow)				
Concentrate		205		152
Silage to milking cows (kg DM/cow)		125		80
Conserved silage (kg DM/cow)		0		0