

A. Critical Issues

1. 12 hour allocations
2. Maintain target residual (4cm).
3. Improve growth rates in young stock.

B. 2014 Calving date trial

- The herd is split into two separate calving dates
- Early calving group – mean calving date is the 25th of Feb.
- Late calving group – mean calving date is the 10th of March.
- Within each group there are equal numbers of Friesian and crossbred cows.

C. Whole farm situation

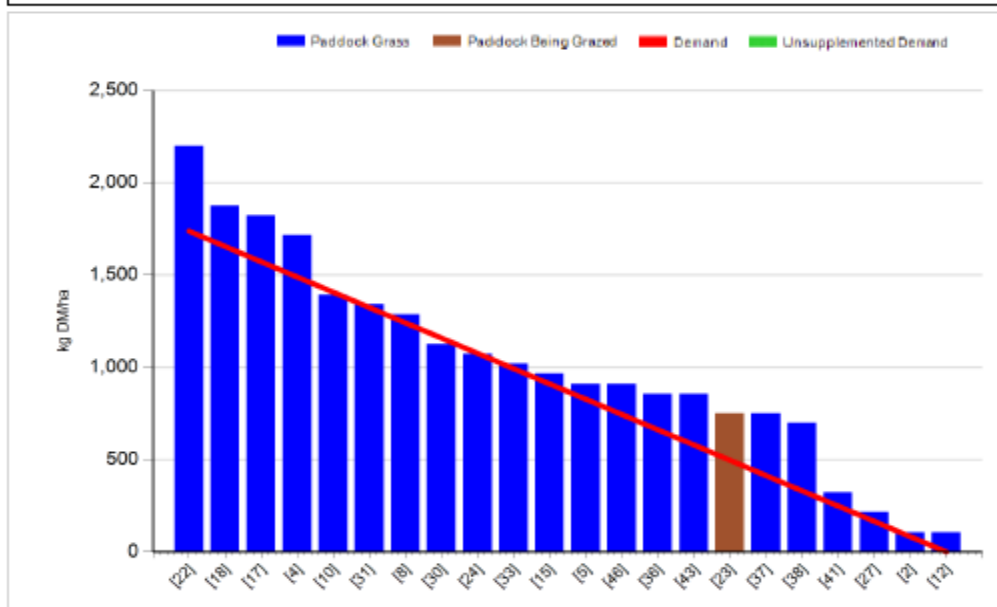
- Soil temperature today is 5.5 mm.
- Total rainfall for past 7 days is 14.7 mm.
- Calves weighed 168kg average, still behind target but ADG was 0.9 kg / day.
- Calves are being moved onto after grass which should boost growth rates.
- In –calf heifers weighed 1st Sept – 415kg, (ADG 0.37kg / day).
- Cows 10% empty (12 weeks)
- Heifers 8% empty (8 weeks)
- Milk yield 15.1kg, 4.68% fat, 3.96% protein (1.3kg Ms / cow), SCC 169,000 and TBC 5,000.

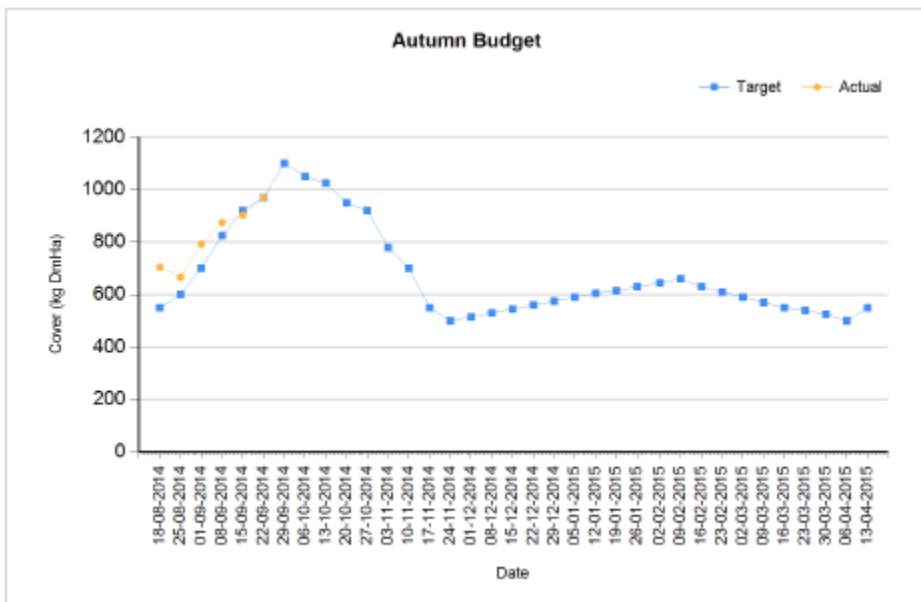
D. Early group

Rotation Length (days):	39	Silage Fed (kg DM/cow):	
Grass Allocation/Cow (kg DM/cow):	15.0	Residual Height (cm):	4.0
No. of Cows:	60		
Concentrate Fed (kg/cow):	2.0		

Cover Parameters

Grass Allocation/LU (kg DM/LU):	15.0	Growth Rate (kg/ha/day):	66
Total Livestock (LU):	60.0	Farm Demand (kg DM/ha/day):	45
Farm Cover (kg DM/ha):	971	Target Pre-grazing yield (kg DM/ha):	1737
Farm Cover (kg DM/LU):	327		
Stocking Rate (LU/ha):	2.97		

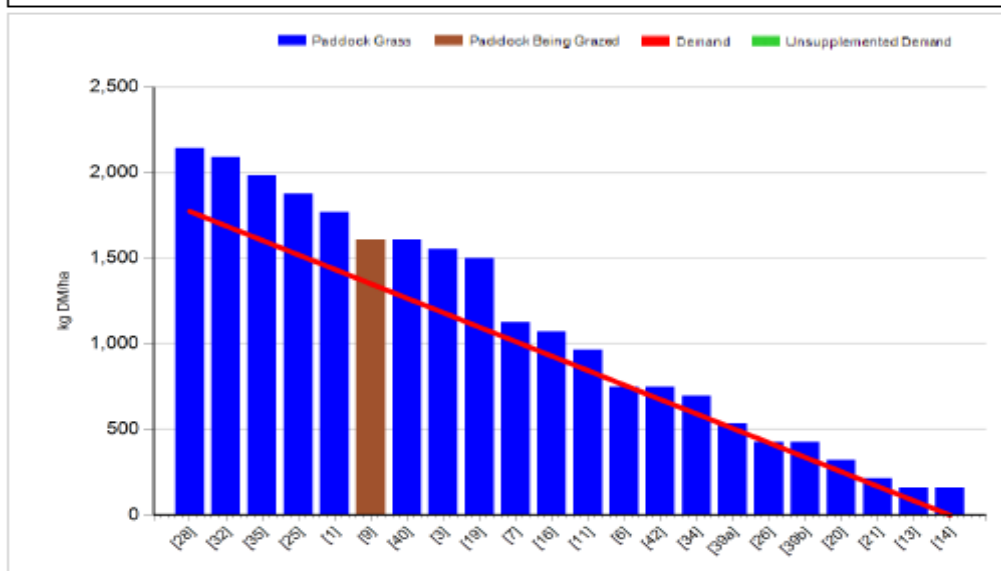


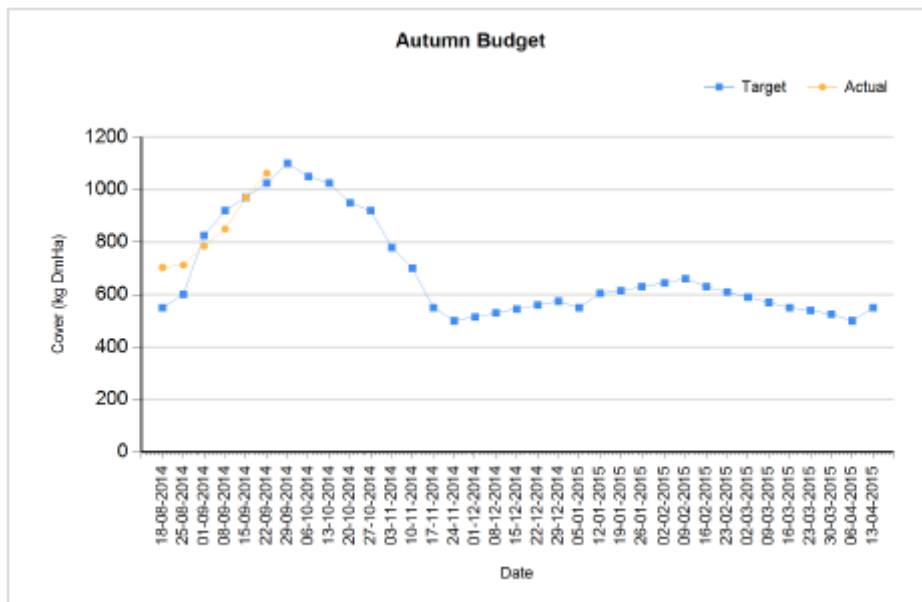


1. Farm cover is 971 kg DM / ha (327kg DM / cow) which is on target according to our autumn budget.
2. Growth rate was 66 kg DM / ha and demand is 45 kg DM / ha. This should allow us to build more cover for the week ahead.
3. Feeding 2kg of concentrate to reduce demand and build covers further.
4. Pre-grazing yield is 2100kg DM / ha and quality is good.
5. DM is 16%.
6. Grazing down to 4.1cm on average. Ground conditions are excellent.
7. Scanning results – 10% empty (12 weeks breeding), 75% in-calf in six weeks.
8. 14 ton DM / ha grown to date.

C. Late Group

Grass Allocation/LU (kg DM/LU):	15.0	Growth Rate (kg/ha/day):	66
Total Livestock (LU):	59.0	Farm Demand (kg DM/ha/day):	45
Farm Cover (kg DM/ha):	1062	Target Pre-grazing yield (kg DM/ha):	1773
Farm Cover (kg DM/LU):	350		
Stocking Rate (LU/ha):	3.03		





1. Farm cover is 1062 kg DM / ha (350kg DM / cow) which is above target.
2. Growth rate was 66kg DM / ha which is above demand of 45kg DM / ha.
3. Pre – grazing yield is 2100kg DM / ha.
4. Grazing out to 4.2cm on average.
5. Scanning results – 10% empty (12 weeks breeding), 73% in-calf in six weeks.
6. 13.5 tons DM / ha grown to date.

D. Critical short term actions :

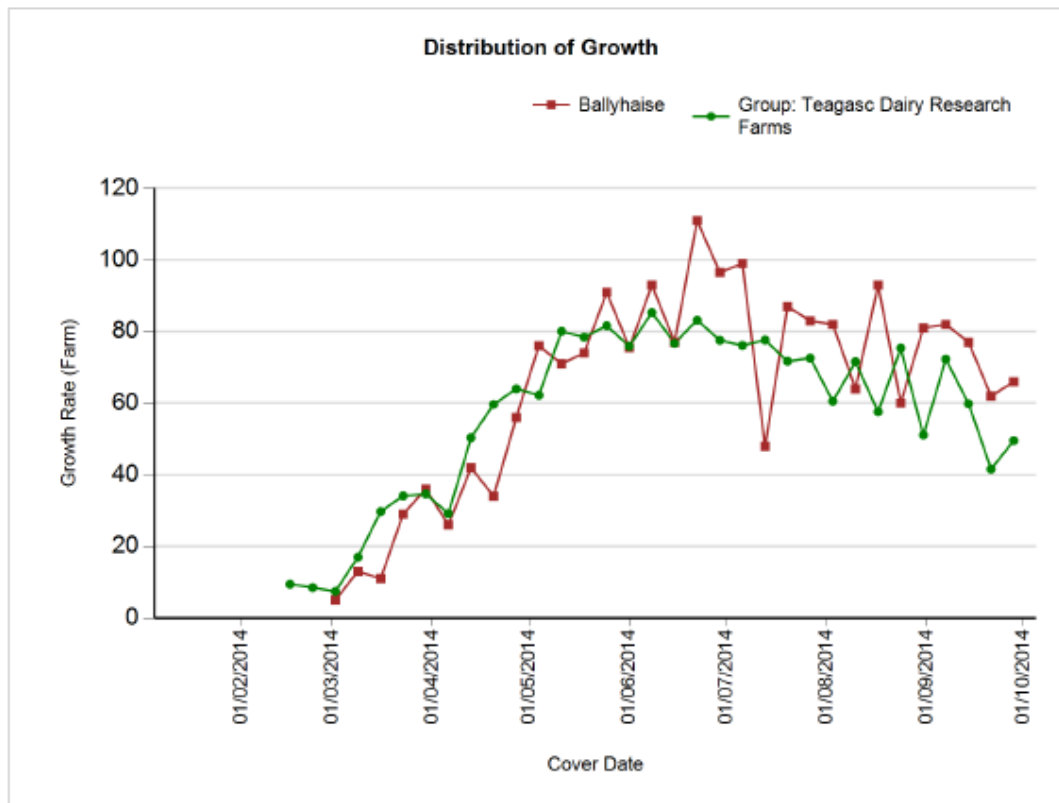
- In- calf heifers need to be moved to fresh grass twice a week to boost growth rates.
- Introduce 2kg of concentrates to help build covers.
- Follow cows with watery slurry

Date : 21/09/2014 Mean calving date	Early 25 th Feb		Late 10 th March	
	FR	JFX	FR	JFX
Stocking rate (cows/ha)	2.9	2.9	2.9	2.9
Milk yield (kg/cow/day)	16.8	14.4	17.1	14.3
% Fat	4.72	4.89	4.66	4.83
% Protein	3.81	4.06	3.79	4.04
% Lactose	4.50	4.54	4.62	4.54
Milk solids (kg/cow/day)	1.43	1.29	1.44	1.27
Supplement (kg/cow/day)				
Concentrate	2	2	2	2
Silage	0	0	0	0
Cumulative				
Milk yield (kg/cow)	4,591	4,158	4,436	3,011
% Fat	4.37	4.66	4.42	4.49
% Protein	3.42	3.60	3.52	3.61
% Lactose	4.83	4.88	4.82	4.81
Milk solids (kg/cow)	357	343	352	325
Weight	521	478	536	467
Body Condition Score	2.86	2.83	2.86	2.89
Supplement (kg/cow)				
Concentrate		406		375
Silage to milking cows (kg DM/cow)		125		80
Conserved silage (kg DM/cow)		795		745

www.agresearch.teagasc.ie/moorepark/



Growth to date compared to average of all Teagasc Research Farms



Growth To Date – 13.75 tonnes DM / ha.