

**A. Critical Issues**

1. 12 hour allocations
2. Maintain target residual (4cm).
3. Improve growth rates in young stock.

**B. 2014 Calving date trial**

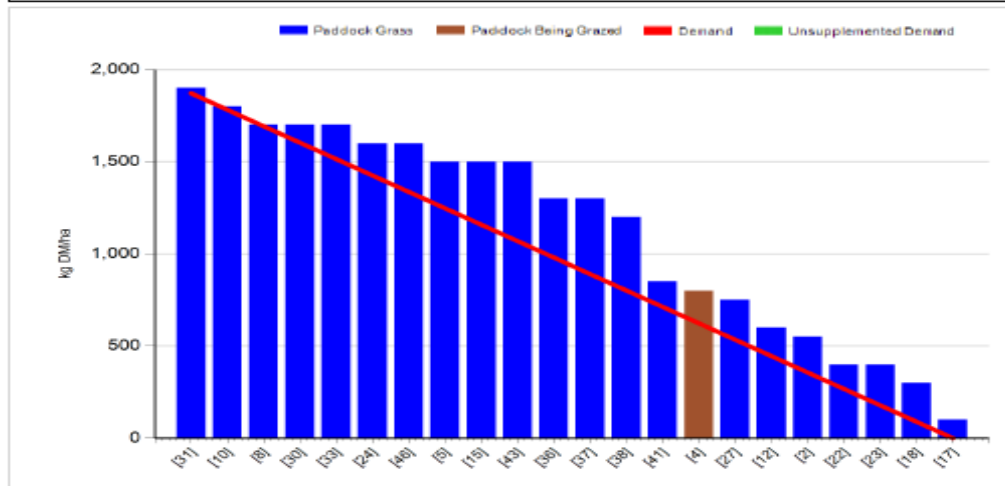
- The herd is split into two separate calving dates
- Early calving group – mean calving date is the 25<sup>th</sup> of Feb.
- Late calving group – mean calving date is the 10<sup>th</sup> of March.
- Within each group there are equal numbers of Friesian and crossbred cows.

**C. Whole farm situation**

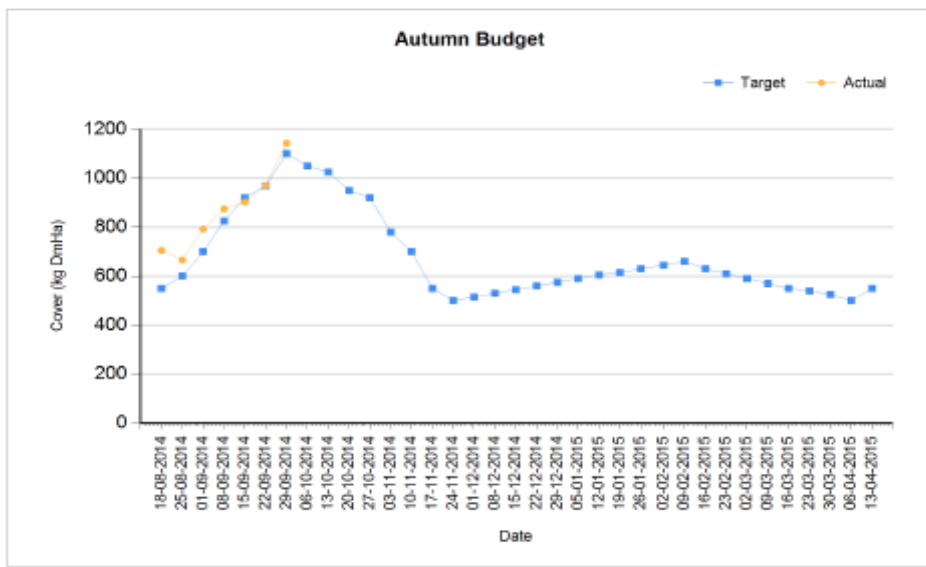
- Soil temperature today is 15.5 mm.
- Total rainfall for past 7 days is 7 mm.
- Cows 10% empty (12 weeks)
- Heifers 8% empty (8 weeks)
- Milk yield 14.6 kg, 4.87% fat, 3.97% protein (1.29kg Ms / cow), SCC 211,000 and TBC 5,000.

**D. Early group**

Rotation Length (days):	42	Silage Fed (kg DM/cow):	
Grass Allocation/Cow (kg DM/cow):	15.0	Residual Height (cm):	4.0
No. of Cows:	60		
Concentrate Fed (kg/cow):	2.0		
<b>Cover Parameters</b>			
Grass Allocation/LU (kg DM/LU):	15.0	Growth Rate (kg/ha/day):	78
Total Livestock (LU):	60.0	Farm Demand (kg DM/ha/day):	45
Farm Cover (kg DM/ha):	1143	Target Pre-grazing yield (kg DM/ha):	1871
Farm Cover (kg DM/LU):	385		
Stocking Rate (LU/ha):	2.97		



1. Farm cover is 1143 kg DM / ha (385kg DM / cow) which is on target according to our autumn budget. This is our target peak cover and should start to decline from now on.
2. Growth rate was 78 kg DM / ha and demand is 45 kg DM / ha. This is a very high growth rate for this time of year but soil temp is still quite high and soil moisture deficit is not restricting growth. Forecast is for cooler more unsettled weather this week so growth will probably drop back this week.
3. Starting to close paddocks from the 1st of October, target is to have 60% grazed by the 25<sup>th</sup> of October.



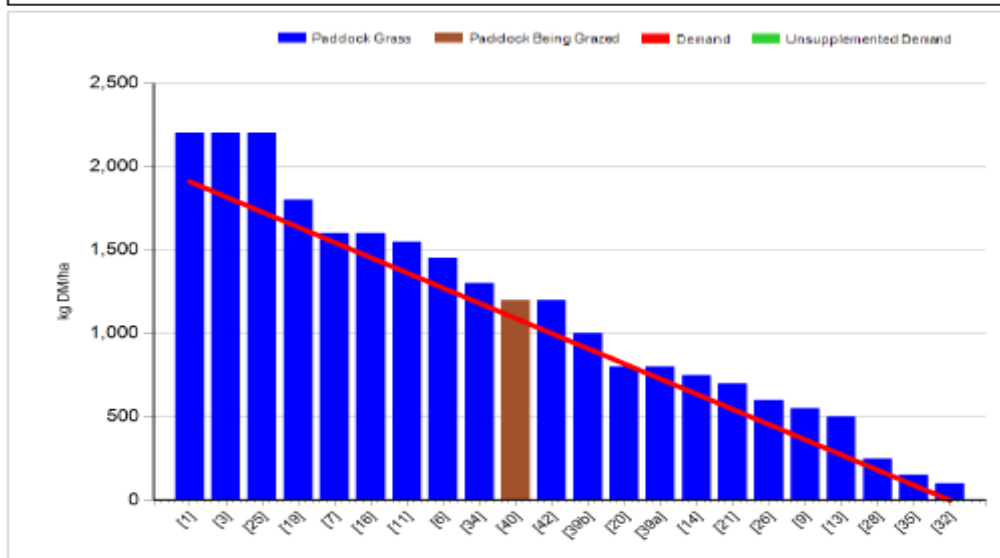
4. Feeding 2kg of concentrate.
5. Pre-grazing yield is 1900kg DM / ha and quality is good.
6. DM is 17%.
7. Grazing down to 4.2cm on average. Ground conditions are excellent.
8. Scanning results – 10% empty (12 weeks breeding), 75% in-calf in six weeks.
9. 14.5 tons DM / ha grown to date.

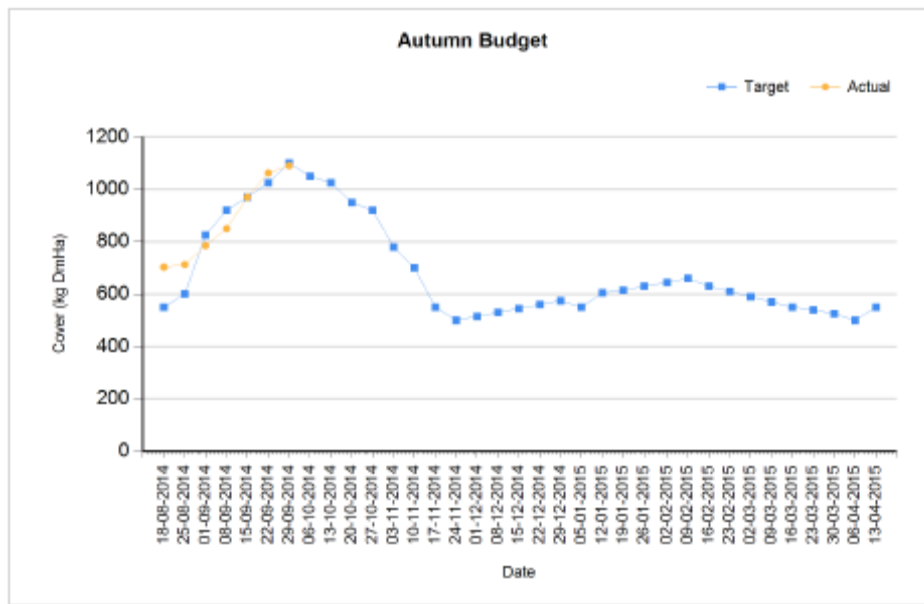
### C. Late Group

Rotation Length (days):	42	Silage Fed (kg DM/cow):	0.0
Grass Allocation/Cow (kg DM/cow):	15.0	Residual Height (cm):	3.5
No. of Cows:	59		
Concentrate Fed (kg/cow):	2.0		

#### Cover Parameters

Grass Allocation/LU (kg DM/LU):	15.0	Growth Rate (kg/ha/day):	68
Total Livestock (LU):	59.0	Farm Demand (kg DM/ha/day):	45
Farm Cover (kg DM/ha):	1090	Target Pre-grazing yield (kg DM/ha):	1909
Farm Cover (kg DM/LU):	360		
Stocking Rate (LU/ha):	3.03		





1. Farm cover is 1090 kg DM / ha (360kg DM / cow) which is on target.
2. Growth rate was 68kg DM / ha which is above demand of 45kg DM / ha.
3. Pre – grazing yield is 2100kg DM / ha.
4. Starting to close paddocks from the 1st of October, target is to have 60% grazed by the 25<sup>th</sup> of October.
5. Grazing out to 4.2cm on average.
6. Scanning results – 10% empty (12 weeks breeding), 73% in-calf in six weeks.
7. 14 tons DM / ha grown to date.

**D. Critical short term actions :**

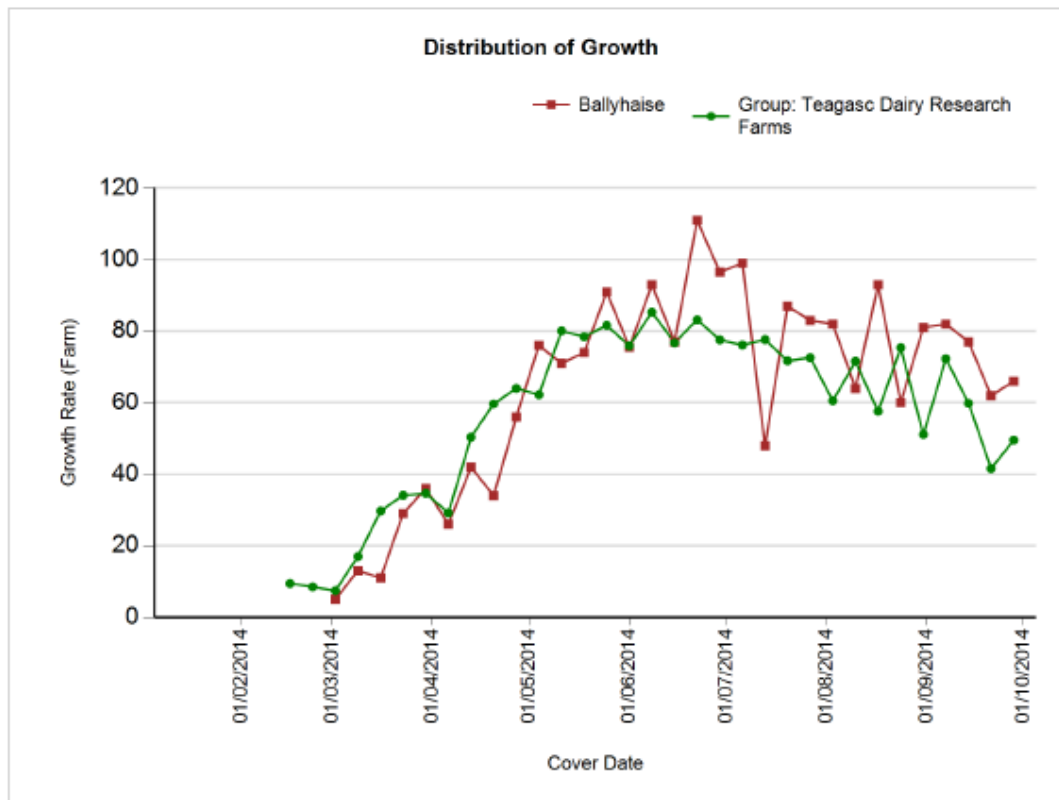
- Start closing paddocks on 1<sup>st</sup> of October.
- Follow cows with watery slurry.
- Will need to graze 1 paddock of 1200kg DM this week to meet autumn plan target.

Date : 28/09/2014 Mean calving date	Early 25 <sup>th</sup> Feb		Late 10 <sup>th</sup> March	
	FR	JFX	FR	JFX
<b>Stocking rate (cows/ha)</b>	<b>2.9</b>	<b>2.9</b>	<b>2.9</b>	<b>2.9</b>
Milk yield (kg/cow/day)	16.1	14.1	17.3	14.8
% Fat	4.70	5.30	4.61	4.96
% Protein	3.84	4.12	3.74	3.98
% Lactose	4.60	4.66	4.53	4.47
Milk solids (kg/cow/day)	1.38	1.32	1.44	1.32
Supplement (kg/cow/day)				
Concentrate	2	2	2	2
Silage	0	0	0	0
<b>Cumulative</b>				
Milk yield (kg/cow)	4,704	4,256	4,557	4,114
% Fat	4.38	4.69	4.42	4.51
% Protein	3.43	3.61	3.52	3.62
% Lactose	4.83	4.88	4.81	4.8
Milk solids (kg/cow)	367	353	362	335
Weight	521	478	536	467
Body Condition Score	2.86	2.83	2.86	2.89
Supplement (kg/cow)				
Concentrate		420		389
Silage to milking cows (kg DM/cow)		125		80
Conserved silage (kg DM/cow)		795		745

[www.agresearch.teagasc.ie/moorepark/](http://www.agresearch.teagasc.ie/moorepark/)



## Growth to date compared to average of all Teagasc Research Farms



**Growth To Date – 14.25 tonnes DM / ha.**