

A. Critical Issues

1. 12 hour allocations
2. Maintain target residual (4cm).
3. Meet target for autumn planner.

B. 2014 Calving date trial

- The herd is split into two separate calving dates
- Early calving group – mean calving date is the 25th of Feb.
- Late calving group – mean calving date is the 10th of March.
- Within each group there are equal numbers of Friesian and crossbred cows.

C. Whole farm situation

- Soil temperature today is 12.5°C.
- Total rainfall for past 7 days is 34 mm.
- Cows 10% empty (12 weeks)
- Heifers 8% empty (8 weeks)
- Milk yield 14.5 kg, 5.04% fat, 4.05% protein (1.31kg Ms / cow), SCC 193,000 and TBC 5,000.

D. Early group

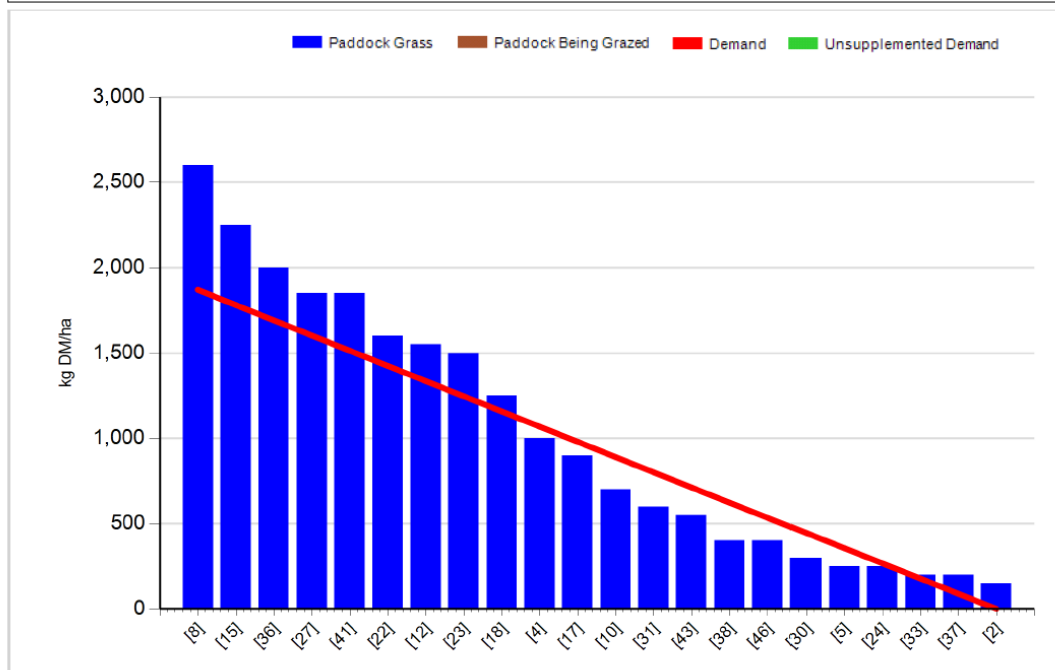
Group: Teagasc Dairy Research Farms	Cover Date: 21/10/2014
Farm: Ballyhaise	Treatment: Early calving

Management Decisions

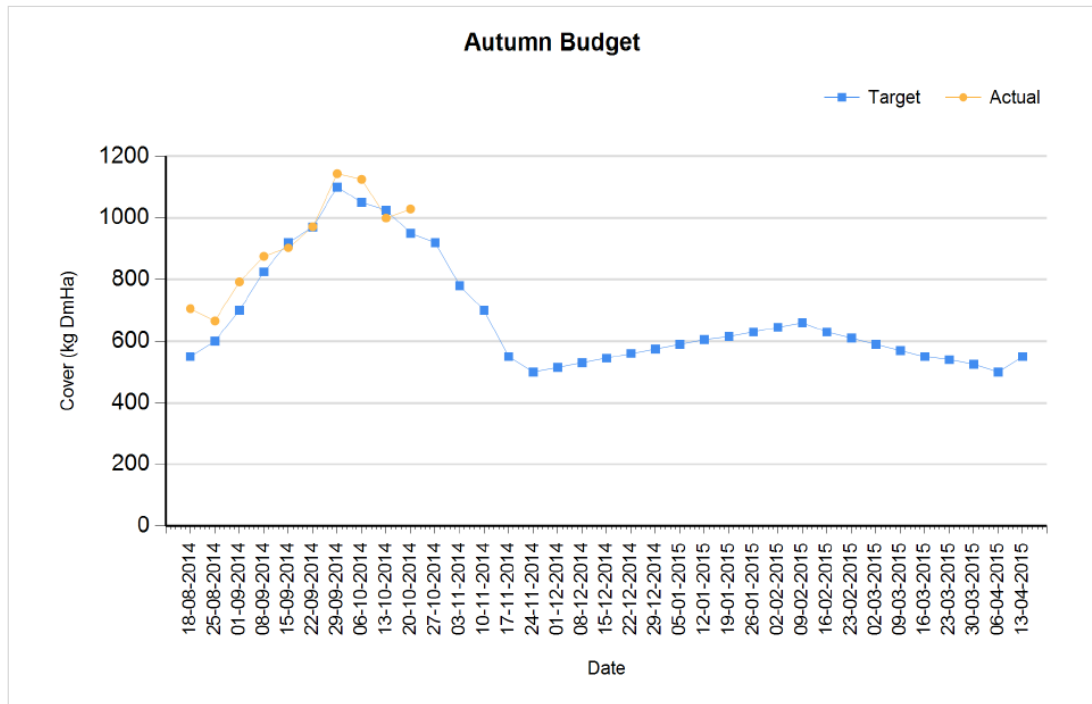
Rotation Length (days):	45	Silage Fed (kg DM/cow):	
Grass Allocation/Cow (kg DM/cow):	14.0	Residual Height (cm):	4.0
No. of Cows:	60		
Concentrate Fed (kg/cow):	3.0		

Cover Parameters

Grass Allocation/LU (kg DM/LU):	14.0	Growth Rate (kg/ha/day):	48
Total Livestock (LU):	60.0	Farm Demand (kg DM/ha/day):	42
Farm Cover (kg DM/ha):	1029	Target Pre-grazing yield (kg DM/ha):	1871
Farm Cover (kg DM/LU):	346		
Stocking Rate (LU/ha):	2.97		



1. Farm cover is 1029 kg DM / ha (346kg DM / cow) which is above target according to our autumn budget.
2. Growth rate was 48 kg DM / ha and demand is 42 kg DM / ha, this increased from 30kg DM / ha last week.
3. Started to close paddocks from the 1st of October, target is to have 60% grazed by the 25th of October. We have 45% closed to date because we grazed some lower covers, we will struggle to hit the target but re-growths on most of the paddocks closed have been good so this won't be a major issue. There is 950kg DM on first paddocks closed. Target closing cover is 600kg DM / ha. We may have to carry over paddocks 22 and 23 to hit this target closing cover which were grazed on the 25th of September.



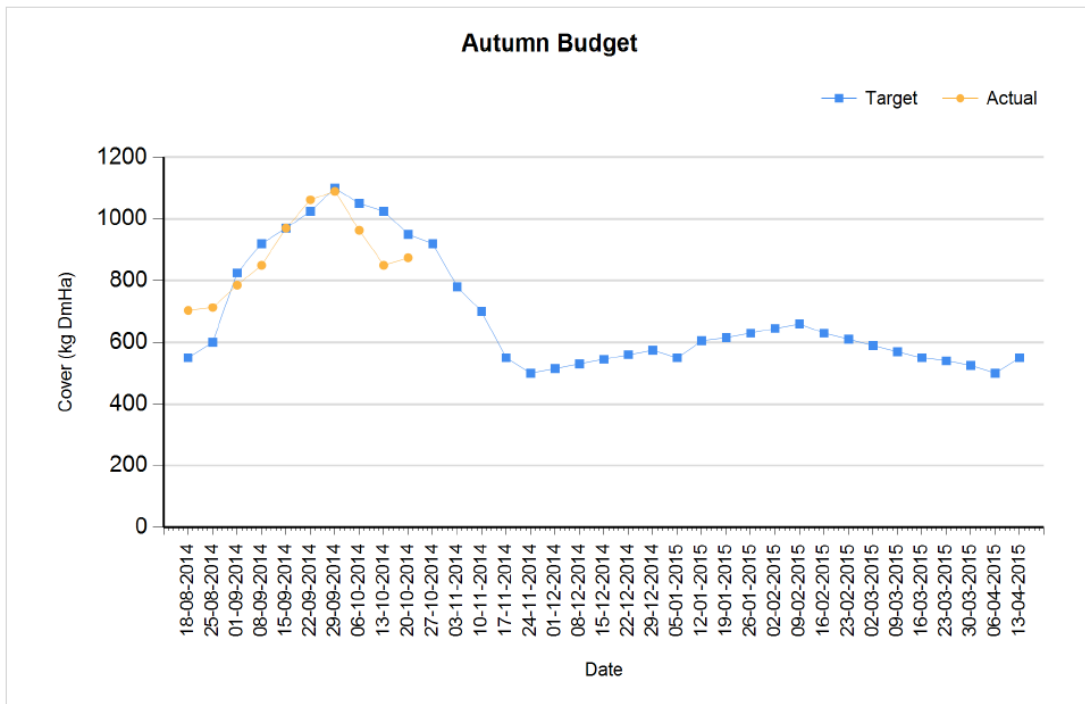
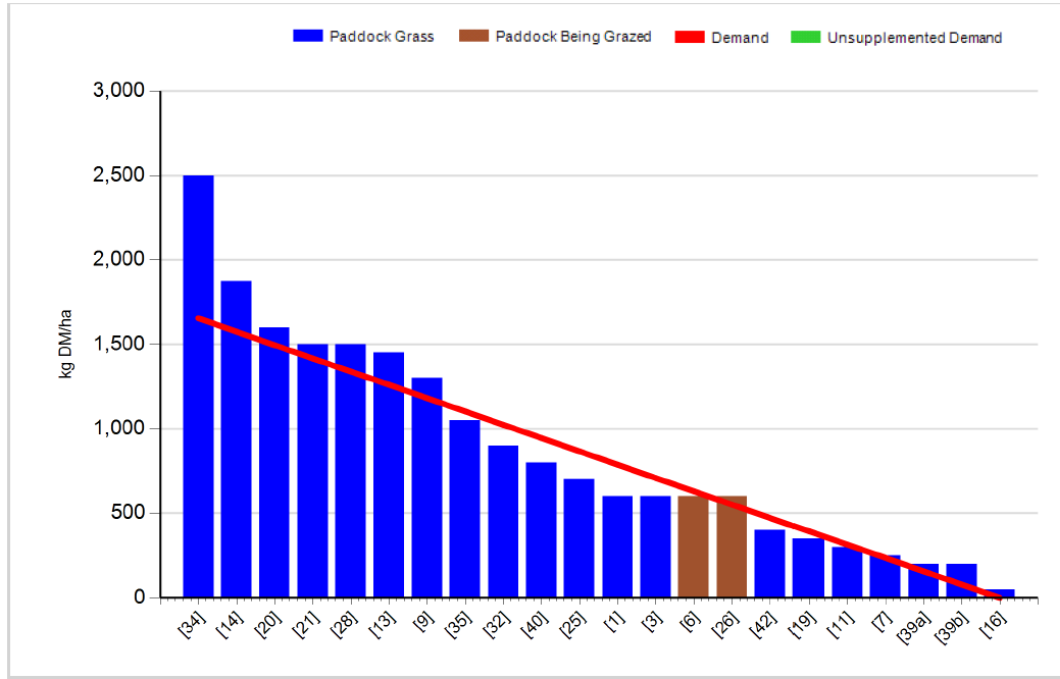
4. Feeding 3kg of concentrate.
5. Pre-grazing yield is 2600kg DM / ha, these are on the strong side but we had to skip into lighter covers to catch up on area grazed.
6. DM is 15%.
7. Grazing down to 4.3cm on average. Ground conditions are good but another 30 – 40 mm of rain will change this quickly on our heavier ground.
8. Scanning results – 10% empty (12 weeks breeding), 75% in-calf in six weeks.
9. 15.4 tons DM / ha grown to date.

C. Late Group

Rotation Length (days):	42	Silage Fed (kg DM/cow):	0.0
Grass Allocation/Cow (kg DM/cow):	13.0	Residual Height (cm):	3.5
No. of Cows:	59		
Concentrate Fed (kg/cow):	3.0		

Cover Parameters

Grass Allocation/LU (kg DM/LU):	13.0	Growth Rate (kg/ha/day):	47
Total Livestock (LU):	59.0	Farm Demand (kg DM/ha/day):	39
Farm Cover (kg DM/ha):	874	Target Pre-grazing yield (kg DM/ha):	1654
Farm Cover (kg DM/LU):	288		
Stocking Rate (LU/ha):	3.03		



1. Farm cover is 874 kg DM / ha (288kg DM / cow) which is below target but has improved since last week due to improved growth rate and increased feeding.

2. Growth rate was 47kg DM / ha which is above demand of 39kg DM / ha. We will hold concentrate feeding at 3kg until the first of November.
3. Pre – grazing yield is 2500kg DM / ha.
4. Starting to close paddocks from the 1st of October, target is to have 60% grazed by the 25th of October. Have 45% closed which is behind target. Target closing cover is 550kg DM / ha, to maintain this we may have to carry over paddocks 40, 32 and 35 which were all grazed before the 1st of October.
5. Grazing out to 4.2cm on average.
6. Scanning results – 10% empty (12 weeks breeding), 73% in-calf in six weeks.
7. 14.8 tons DM / ha grown to date.

D. Critical short term actions :

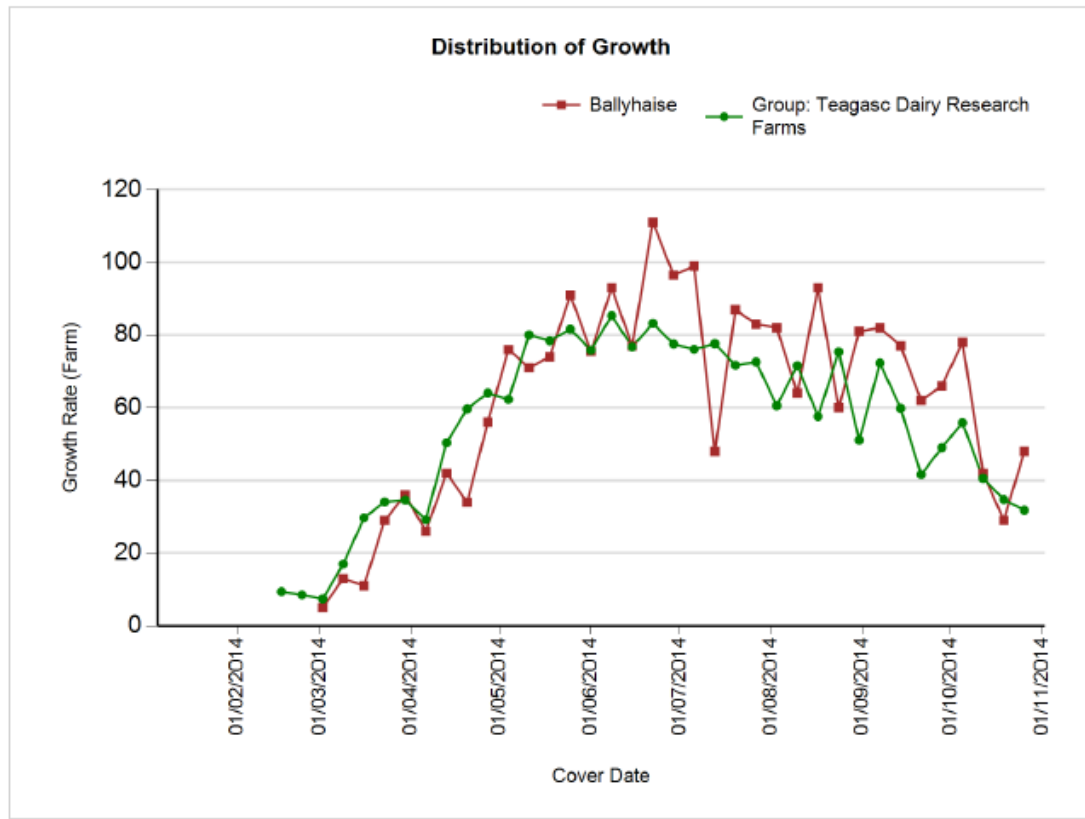
- Started closing paddocks on 1st of October.
- Have to graze off heavy covers over next week or 10 days.
- Monitor cover closely and don't let drop below target.

Date : 19/10/2014 Mean calving date	Early 25 th Feb		Late 10 th March	
	FR	JFX	FR	JFX
Stocking rate (cows/ha)	2.9	2.9	2.9	2.9
Milk yield (kg/cow/day)	15.4	13.5	16.5	13.2
% Fat	4.71	5.10	4.65	5.06
% Protein	4.02	4.15	3.93	4.14
% Lactose	4.72	4.72	4.67	4.60
Milk solids (kg/cow/day)	1.35	1.24	1.41	1.22
Supplement (kg/cow/day)				
Concentrate	3	3	3	3
Silage	0	0	0	0
Cumulative				
Milk yield (kg/cow)	5,017	4,543	4,908	4,405
% Fat	4.40	4.71	4.43	4.55
% Protein	3.47	3.64	3.55	3.65
% Lactose	4.82	4.87	4.80	4.79
Milk solids (kg/cow)	394	379	392	361
Weight	521	478	536	467
Body Condition Score	2.90	2.85	2.76	2.83
Supplement (kg/cow)				
Concentrate		469		430
Silage to milking cows (kg DM/cow)		125		80
Conserved silage (kg DM/cow)		795		745

www.agresearch.teagasc.ie/moorepark/



Growth to date compared to average of all Teagasc Research Farms



Growth To Date – 15.2 tonnes DM / ha.