

Johnstown Castle Weekly Farm Notes- April 8th

Introduction

These management notes refer to the Johnstown Winter Milk Herd in Co Wexford. This herd has:

- 100% autumn calving
- A mean calving date of October 8th. Calving commences in early September and continues until early December.
- A Holstein Friesian base with an EBI of €119 (see page 3). Aim is a 50:50 balance for milk and fertility

The herd produces approximately 45% of annual supply from October to February inclusive. This includes 20% of annual supply in December and January.

A new experiment commenced in October 2011, comparing different concentrate feeding systems at similar stocking rates (3.25 cows per ha). Briefly, the systems compared are:

Feed to budget (GREEN): Maximizes the proportion of quality forage in the milking diet. Supplements used to balance feed availability and demand at a herd level. Flat-rate concentrate feeding at pasture and during housing.

Feed to yield (RED): Meets the daily nutritional demands of the cow while maximising quality forage in the diet. Concentrates offered on an individual cow basis, depending on yield and the base diet.

There are 42 cows per group. For reference, management notes will refer to the flat rate (GREEN) group

Management Issues

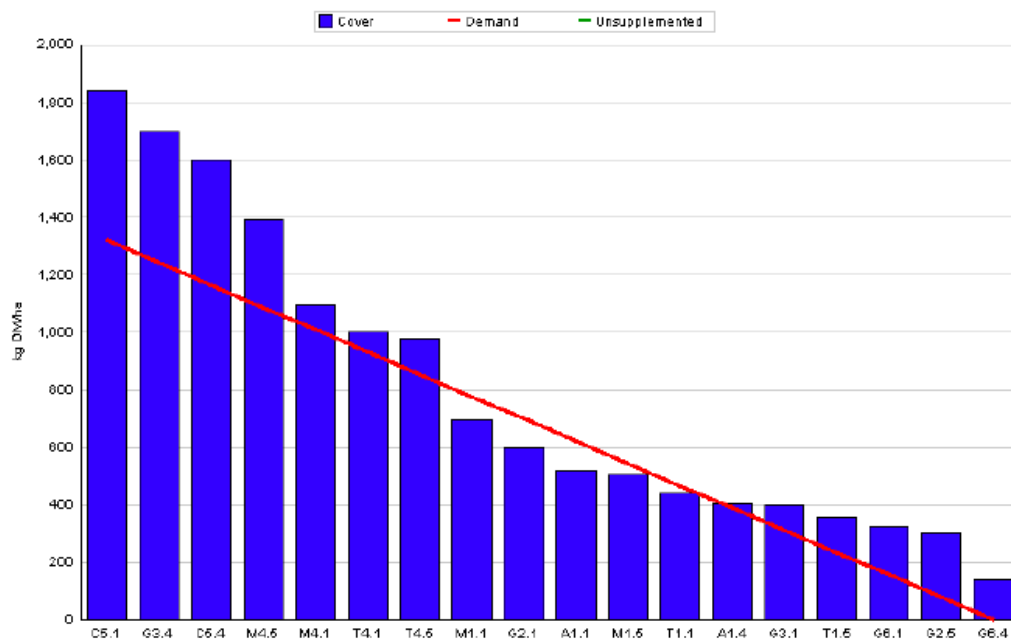
- Post grazing residuals- targeting 4cm
- Silage area- closing to increase stocking rate over 4.0 per ha
- Target pre-grazing yields 1400kgDM

Current Situation

- Pre-grazing yields currently above target at 1800kg DM. Farm cover is 247kg/cow, which is above target. Rotation length is currently 24 days (4.2 % of area grazed per day). Closing silage area had been postponed due to cold weather conditions, but growth now stands at 70kgDM. Silage area will be removed from rotation and cover calculations this week, which will reduce cover per cow and increase stocking rate to 4.2 cows/ha. A 20 day rotation will be set on the revised area.
- Grazing conditions have been excellent which is helping to achieve post grazing heights (current 4.0cm). Cows are currently being offered 1.6kg of concentrate

- Current yield is satisfactory at 25.9kg 3.80% fat 3.58% protein
- There have been no recorded cases of health problems in the herd this week.

Rotation Length :	22	Grass Allocation /LU (kg DM/LU) :	18
Number of Cows :	49	Farm Cover (kg DM/ha) :	824
Grass Allocation /cow (kg grass dry matter/LU)	18	Farm Cover (kg DM/LU) :	247
Concentrate Fed (kg/cow) :	1.2		
Silage Fed (kg DM/cow) :	0		
N Application Rate (units/acre) :		Stocking Rate (LU/ha) :	3.34
N Application Rate (kg/ha) :		Growth Rate :	73
Residual Height :	3.3	Farm Demand (kg DM/ha/day) :	60
Total Livestock (LU) :	49	Target pregrazing yield (kg DM/ha) :	1321



Weekly production sheet for week ending April 8th

Detailed Data Update to week ending: 08-APR-12	
Feed System	Au
Genotype	Feed
Mean calving date of cows calved	10-OCT
Farmlet size (ha)	
Farmlet stocking rate (cows/ha)	
Production Data This Week	
Supplementation (kg/cow/day)	1.6
Milk Yield (kg/cow/day)	25.9
Milk Solids (kg/cow/day)	1.91
Fat Composition (%)	3.80
Protein Composition (%)	3.58
Lactose Composition (%)	4.65
Body Weight (kg)	412
Body Condition Score	
Cumulative Production to date	
Days in Milk (days)	184
Supplement fed (kg/cow)	915
Milk Yield (kg/cow)	4909
Milk Solids (kg/cow)	366
Milk Solids (kg/ha)	
Fat Composition (%)	4.04
Protein Composition (%)	3.41
Lactose Composition (%)	4.72

HERD EBI Johnstown Castle , January 2012

Data Exported: 29/10/2011

1. EBI Herd Summary

Average EBI for all dairy cows with: (i) a known sire (or milk recorded progeny with a known sire) and (ii) are currently on your farm.

* Missing Sires can be added through the 'Record Events' section of the HerdPlus website or by contacting the HerdPlus office - 1850 600 900

Animal Group	Num of Cows	Milk Kg Fat Prot	% %	Surv% CI Days	Milk % Contrib	Fertility % Contrib	Calving % Contrib	Beef % Contrib	Mainten. % Contrib	Health % Contrib	EBI €
Cows with EBI	118	178			€ 40	€ 68.7	€ 17.4	€ -8.1	€ 1.3	€ -0.2	€ 119
Missing a Sire*	1	7.5	0.02	2.1	29.5%	50.6%	12.8%	-6%	1%	-0.1%	
Total Cows	119	7.7	0.04	-3.7							
1st Lactation	45	213			€ 41.2	€ 58.1	€ 18.7	€ -11.5	€ 1.5	€ -0.6	€ 107
		7.6	-0.01	1.7	31.3%	44.1%	14.2%	-8.7%	1.1%	-0.5%	
		8.4	0.03	-3.2							
2nd Lactation	20	161			€ 38.3	€ 69.5	€ 20	€ -6.1	€ -0.9	€ -0.1	€ 121
		8.7	0.05	2.2	28.4%	51.5%	14.8%	-4.5%	-0.7%	-0.1%	
		7.1	0.03	-3.6							
3rd Lactation	17	154			€ 50	€ 77.2	€ 15	€ -9	€ 2.6	€ -0.4	€ 135
		9.6	0.07	2.3	32.4%	50.1%	9.7%	-5.8%	1.7%	-0.3%	
		8.6	0.07	-4.2							
4th Lactation	15	130			€ 32.3	€ 84.5	€ 19.5	€ -4.9	€ 1.9	€ -0.3	€ 133
		6.2	0.03	2.5	22.5%	58.9%	13.6%	-3.4%	1.3%	-0.2%	
		6.0	0.03	-4.6							
5th Lactation (+)	21	170			€ 36	€ 72.6	€ 12.8	€ -4.4	€ 1.5	€ 0.6	€ 119
		5.3	-0.02	2.2	28.1%	56.8%	10%	-3.4%	1.2%	0.5%	
		7.4	0.03	-3.9							

2. Dairy Youngstock

11 Calves	37	153			€ 49.3	€ 93.9	€ 22.3	€ -10.3	€ 0.6	€ 2.5	€ 158
Missing a Sire*	0	9.6	0.07	2.6	27.6%	52.5%	12.5%	-5.8%	0.3%	1.4%	
Total Calves	0	8.5	0.07	-5.2							
10 Calves	45	145			€ 52.3	€ 80.4	€ 20.9	€ -14.3	€ 2.7	€ 0.8	€ 143
Missing a Sire*	0	9.8	0.09	2.2	30.5%	46.9%	12.2%	-8.3%	1.6%	0.5%	
Total Calves	37	8.9	0.09	-4.5							

