

Johnstown Castle Weekly Farm Notes- June 24th

Introduction

These management notes refer to the Johnstown Winter Milk Herd in Co Wexford. This herd has:

- 100% autumn calving
- A mean calving date of October 8th. Calving commences in early September and continues until early December.
- A Holstein Friesian base with an EBI of €119 (see page 3). Aim is a 50:50 balance for milk and fertility

The herd produces approximately 45% of annual supply from October to February inclusive. This includes 20% of annual supply in December and January.

A new experiment commenced in October 2011, comparing different concentrate feeding systems at similar stocking rates (3.25 cows per ha). Briefly, the systems compared are:

Feed to budget (GREEN): Maximizes the proportion of quality forage in the milking diet. Supplements used to balance feed availability and demand at a herd level. Flat-rate concentrate feeding at pasture and during housing.

Feed to yield (RED): Meets the daily nutritional demands of the cow while maximising quality forage in the diet. Concentrates offered on an individual cow basis, depending on yield and the base diet.

There are 42 cows per group. For reference, management notes will refer to the flat rate (GREEN) group

Management Issues

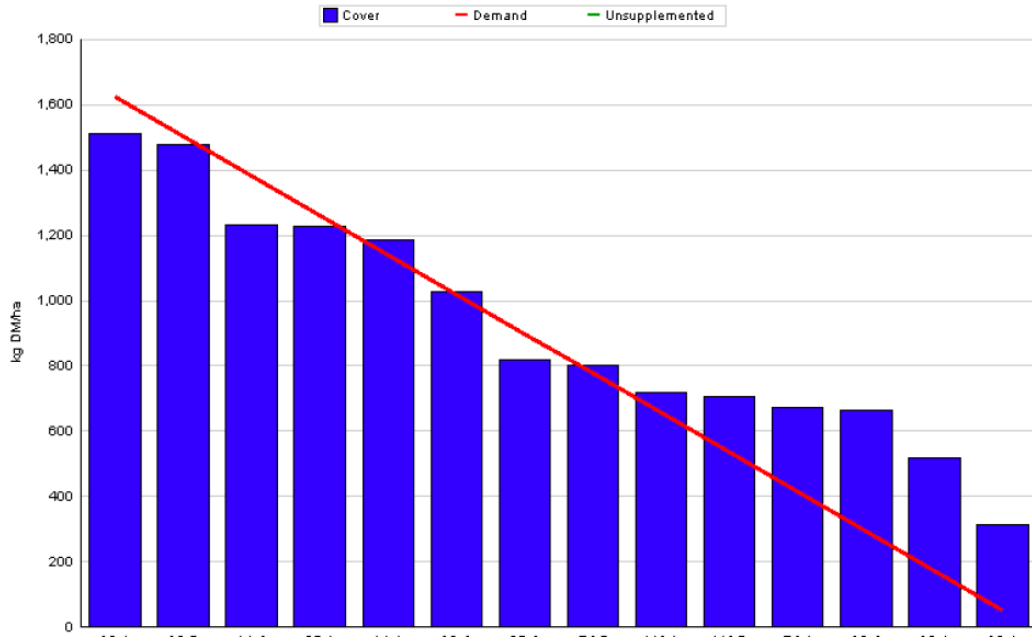
- Difficult grazing conditions due to persistent rain- avoid poaching
- Maintain rotation length at 20 days during variable growth
- Maintain grass intake of 18kgDM
- Post grazing residuals- targeting 4cm
- Target pre-grazing yields 1400kgDM

Current Situation

- Difficult grazing conditions over the last week led to cows being housed for 3 nights to avoid poaching. (Rainfall for last 7 days was 30mm) Good quality round bale silage offered as a buffer feed during this time.
- Pasture growth was 45kg this week. Farm is stocked at 4.2 cows per ha with silage area closed. Meal feeding 0.2kg.
- Holding rotation length at 20days by grazing less 5% of available area per day.
- Cover per cow is 225kg DM, which is above the above target 170kg per cow, and pre-grazing yield is 1600kg DM. However, with very variable growth

rates, the decision is to continue grazing at this level and not remove paddocks unless significant quality issues arise

- Current yield is 17.8kg, 4.10% fat and 3.77% protein (1.41 kg MS). Cumulative milk solids per cow stands at 496kg for 260 days in milk. Herd is on target to exceed average 520kg MS per cow.
- There have been no recorded cases of health problems in the herd this week.



Weekly production sheet for week ending June 24th

Detailed Data Update to week ending: 24-JUN-12	
Feed System	Au
Genotype	Feed
Mean calving date of cows calved	10-OCT
Famlet size (ha)	
Famlet stocking rate (cows/ha)	
Production Data This Week	
Supplementation (kg/cow/day)	
Milk Yield (kg/cow/day)	17.8
Milk Solids (kg/cow/day)	1.40
Fat Composition (%)	4.10
Protein Composition (%)	3.77
Lactose Composition (%)	4.51
Body Weight (kg)	618
Body Condition Score	
Cumulative Production to date	
Days in Milk (days)	280
Supplement fed (kg/cow)	1088
Milk Yield (kg/cow)	6649
Milk Solids (kg/cow)	498
Milk Solids (kg/ha)	
Fat Composition (%)	3.98
Protein Composition (%)	3.48
Lactose Composition (%)	4.70

HERD EBI Johnstown Castle , January 2012

Data Exported: 29/10/2011

1. EBI Herd Summary

Average EBI for all dairy cows with: (i) a known sire (or milk recorded progeny with a known sire) and (ii) are currently on your farm.

* Missing Sires can be added through the 'Record Events' section of the HerdPlus website or by contacting the HerdPlus office - 1850 600 900

Animal Group	Num of Cows	Milk Kg Fat Prot	% %	Surv% CI Days	Milk % Contrib	Fertility % Contrib	Calving % Contrib	Beef % Contrib	Mainten. % Contrib	Health % Contrib	EBI €
Cows with EBI	118	178			€ 40	€ 68.7	€ 17.4	€ -8.1	€ 1.3	€ -0.2	€ 119
Missing a Sire*	1	7.5	0.02	2.1	29.5%	50.6%	12.8%	-6%	1%	-0.1%	
Total Cows	119	7.7	0.04	-3.7							
1st Lactation	45	213			€ 41.2	€ 58.1	€ 18.7	€ -11.5	€ 1.5	€ -0.6	€ 107
		7.6	-0.01	1.7	31.3%	44.1%	14.2%	-8.7%	1.1%	-0.5%	
		8.4	0.03	-3.2							
2nd Lactation	20	161			€ 38.3	€ 69.5	€ 20	€ -6.1	€ -0.9	€ -0.1	€ 121
		8.7	0.05	2.2	28.4%	51.5%	14.8%	-4.5%	-0.7%	-0.1%	
		7.1	0.03	-3.6							
3rd Lactation	17	154			€ 50	€ 77.2	€ 15	€ -9	€ 2.6	€ -0.4	€ 135
		9.6	0.07	2.3	32.4%	50.1%	9.7%	-5.8%	1.7%	-0.3%	
		8.6	0.07	-4.2							
4th Lactation	15	130			€ 32.3	€ 84.5	€ 19.5	€ -4.9	€ 1.9	€ -0.3	€ 133
		6.2	0.03	2.5	22.5%	58.9%	13.6%	-3.4%	1.3%	-0.2%	
		6.0	0.03	-4.6							
5th Lactation (+)	21	170			€ 36	€ 72.6	€ 12.8	€ -4.4	€ 1.5	€ 0.6	€ 119
		5.3	-0.02	2.2	28.1%	56.8%	10%	-3.4%	1.2%	0.5%	
		7.4	0.03	-3.9							

2. Dairy Youngstock

11 Calves	37	153			€ 49.3	€ 93.9	€ 22.3	€ -10.3	€ 0.6	€ 2.5	€ 158
Missing a Sire*	0	9.6	0.07	2.6	27.6%	52.5%	12.5%	-5.8%	0.3%	1.4%	
Total Calves	0	8.5	0.07	-5.2							
10 Calves	45	145			€ 52.3	€ 80.4	€ 20.9	€ -14.3	€ 2.7	€ 0.8	€ 143
Missing a Sire*	0	9.8	0.09	2.2	30.5%	46.9%	12.2%	-8.3%	1.6%	0.5%	
Total Calves	37	8.9	0.09	-4.5							

