

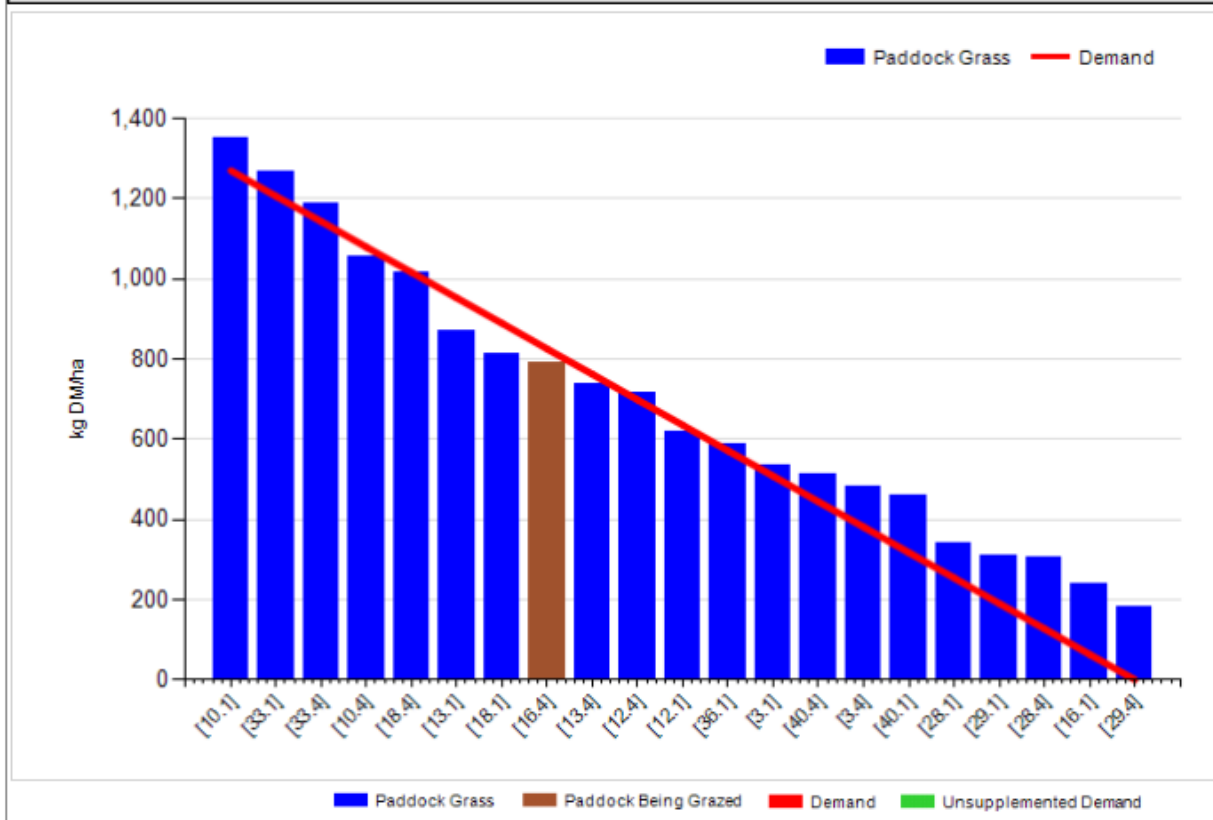
# Johnstown Castle Winter Milk Herd- Weekly Management Notes

30/03/15

## Pasture Covers

### Cover Parameters

Grass Allocation/LU (kg DM/LU):	8.3	Growth Rate (kg/ha/day):	26
Total Livestock (LU):	52.0	Farm Demand (kg DM/ha/day):	25
Farm Cover (kg DM/ha):	698	Target Pre-grazing yield (kg DM/ha):	1270
Farm Cover (kg DM/LU):	228	Days Ahead:	28
Stocking Rate (LU/ha):	3.06	LW/ha (Liveweight/ha):	137



## Management Comments

- Soil temp averaged 7.3 for last week. Rainfall 28.6mm
- Plan to blanket spread 32kgsN/ha (urea) this week (third round), except on paddocks which got 17,000 L slurry/ha, after grazing in the last 10 days.
- Spring calving, very slow for the past 2 weeks, but remainder (15%) should be calved by mid April
- Plan to start 2<sup>nd</sup> round ~ 5th April, hope to graze day & night from midweek & supplement with 4kgs silage if necessary, grass is starting to move.

## Milk production and feed details

	Autumn Calving Section	Spring Calving Section
<b><i>This Week (30/03/15)</i></b>		
Milk Kg	27.8	31.0
Fat %	4.03	4.12
Protein %	3.50	3.26
Milk Solids kg	2.08	2.27
Concentrate kg		
Parlour	5.0	5.0
TMR	2.0	2.0
Silage kg dry matter per cow	5	5
Grazed grass kg cow	9	9
<b><i>Lactation to date</i></b>		
Milk kg	3934	1134
Milk Solids kg	331	87
Concentrate Fed	756 parlor & 350kg tmr	227 parlor & 110kg tmr