

Johnstown Castle Winter Milk Herd- Weekly Management Notes

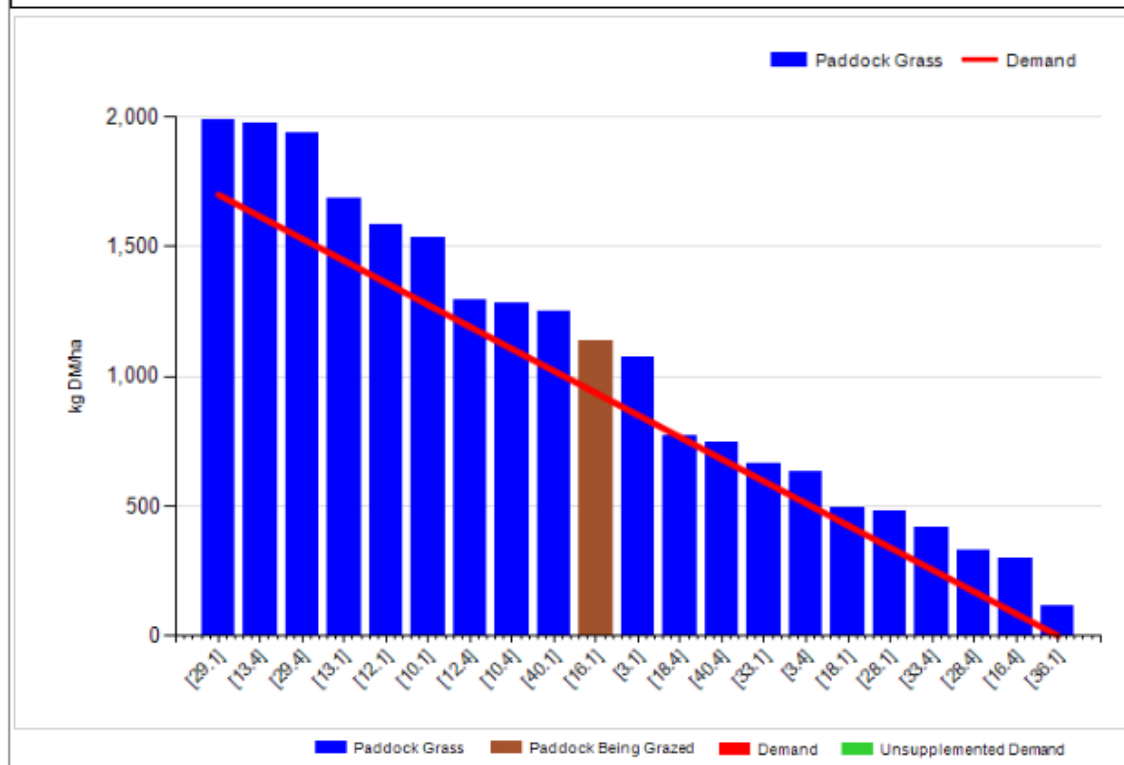
19/10/15

Management Decisions

Rotation Length (days):	40	Silage Fed (kg DM/cow):	0.0
Grass Allocation/Cow (kg DM/cow):	16.0	Residual Height (cm):	4.0
No. of Cows:	44		
Concentrate Fed (kg/cow):	3.0		

Cover Parameters

Grass Allocation/LU (kg DM/LU):	15.3	Growth Rate:	41
Total Livestock (LU):	52.0	Farm Demand (kg DM/ha/day):	47
Farm Cover (kg DM/ha):	954	Target Pre-grazing yield (kg DM/ha):	1700
Farm Cover (kg DM/LU):	312	Days Ahead:	20
Stocking Rate (LU/ha):	3.06	LW/ha (Liveweight/ha):	273



Management Comments

- Rainfall of just 0.2mm (effectively none) and soil temp of 10.5°C for last week, significant drop in soil temp since last week, but growth remained relatively high.
- Although a couple of paddocks are above target pre-grazing, we have them under control – most of remaining high covers are paddocks where surplus silage was cut in the last round so cleanout should still be good. Demand is increasing as autumn cows settle in.
- Yet another excellent week in terms of grazing conditions, 54% of last round now complete, target of 75-80% by month end. Excellent re-growths on grazed paddocks, but these were well grazed out for final grazing, so we expect to stick with closing plan & stay away from these paddocks, a high demand in the spring will take down any high covers quickly at that stage.
- Calving tipping along, great conditions for outdoor calving– 68% of autumn herd now calved.
- Maize silage, grown on contract, getting close to harvest, possibly later this week.

- Autumn calvers going onto 4Kgs conc/cow this week, no other buffer feeding until we have at least 80% of area closed & pre-grazing covers are back to 1200-1400.

Milk production and feed details

	Autumn Calving Section	Spring Calving Section
<i>This Week (19/10/15) – cows in milk</i>	<i>high % of freshly calved cows so figures may be inconsistent</i>	
Milk Kg	25.7	18
Fat %	5.27	4.60
Protein %	3.70	4.18
Milk Solids kg	2.29	1.57
Parlour concentrate (kgs)	3.0	2.0
Silage kg dry matter per cow	0	0
Grazed grass kg cow	15	16
% of Herd Milking	68%	100%
<i>Lactation to date</i>		
Days in Milk	---	231
Milk kg	---	5814
Milk Solids kg	---	444
Concentrate Fed	---	424kg parlor & 105kg tmr