

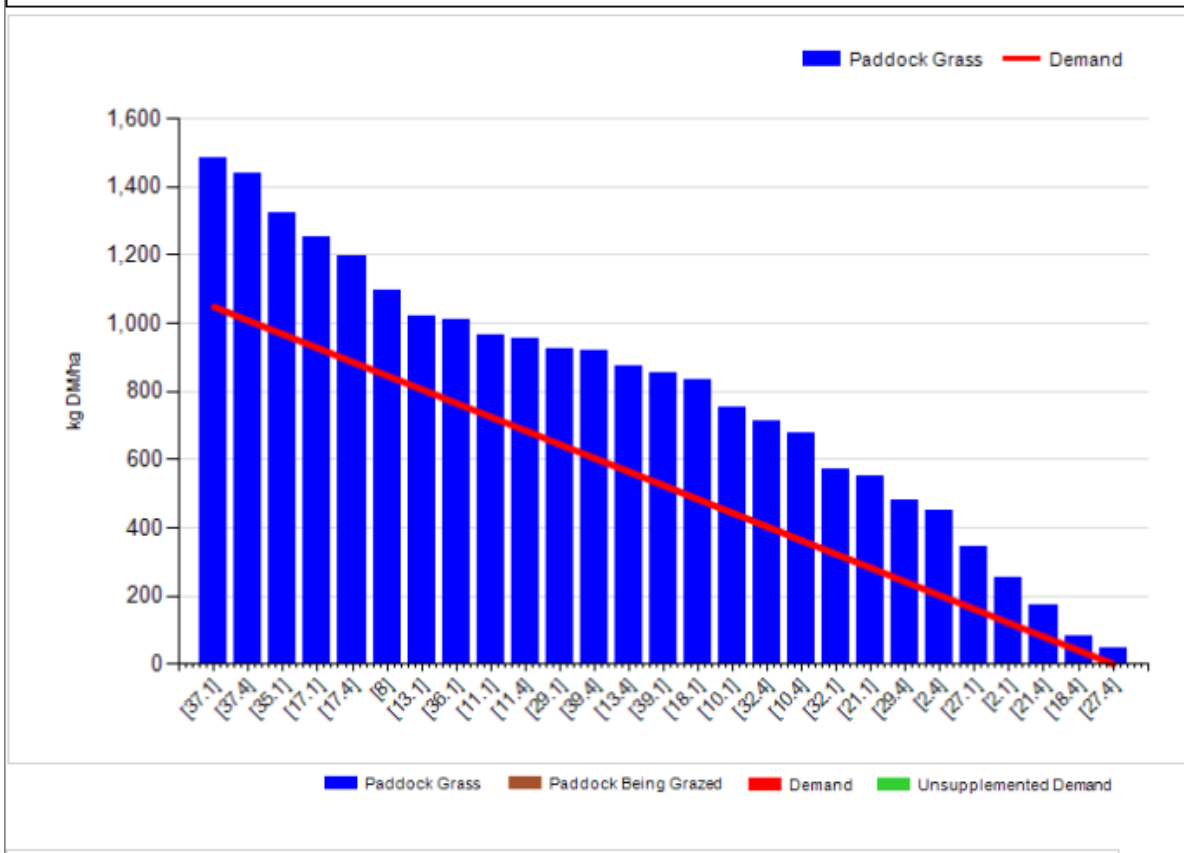
Johnstown Castle Winter Milk Herd- Weekly Management Notes

Management Comments

22/02/16

- The past week saw further disagreeable weather conditions, torrential rain on Tuesday of last week resulted in us leaving the cows housed until Monday of this week. Ground conditions today are still just borderline ok' but are improving with the better weather. Total rainfall for the past week was 34.7mm soil temperatures were back further this week to 5.0 °C. With a reasonably good forecast for the coming week we hope to get into some settled grazing.
- This will be the final week of breeding for the autumn calving herd. Milk production steady, averaging ~29kgs milk/cow @2.2kgs/MS/cow.
- Very slow week with calving, only 63% of the spring herd calved to date, we've had a very low % of replacement females to date (23%). When the spring herd are housed fulltime (due to poor weather) we're feeding a 60:40 grass silage:maize silage mix, along with 3kgs concentrate. We really would like them to be at grass, at least by day.

| | | | |
|---------------------------------|------|--------------------------------------|------|
| Grass Allocation/LU (kg DM/LU): | 6.0 | Growth Rate: | 13 |
| Total Livestock (LU): | 60.0 | Farm Demand (kg DM/ha/day): | 17 |
| Farm Cover (kg DM/ha): | 772 | Target Pre-grazing yield (kg DM/ha): | 1048 |
| Farm Cover (kg DM/LU): | 265 | Days Ahead: | 45 |
| Stocking Rate (LU/ha): | 2.91 | LW/ha (Liveweight/ha): | 0 |



| Spring Rotation Plan | Target | Actual |
|---------------------------------------|--|--------|
| % farm grazed by 15 th Feb | 24% | 14% |
| Pre-grazing cover | 1100 | 1200 |
| Post grazing height (cm) | 3.5 | 3.8 |
| % grazed by 29 th Feb | 34% (original target), 26% would be good at this stage | |
| | | |

Milk production and feed details

| | <i>This week (22/02/16)</i> | Autumn Calving Section | Spring Calving Section |
|-------------------|---------------------------------|---------------------------------------|------------------------|
| Production | % of Herd Milking | 100 | 63% |
| | Milk Kg | | |
| | Fat % | | |
| | Protein % | | |
| | Milk Solids kg | | |
| Intake | Grazed Grass kgs/dm/cow | 7 | 6 |
| | Silage kgs/dm/cow | 6.5 | 3 |
| | Maize silage kgs/dm/cow | 4 | 2 |
| | Concentrate in TMR – kgs/dm/cow | 4 | 0 |
| | Parlour concentrate kgs/dm/cow | 0.8 | 2.5 |
| Totals | Lactation to date | Mean calving date 6 th Oct | |
| | Days in Milk | 139 | |
| | Milk kg | 3725 | |
| | Milk Solids kg | 294 | |
| | Concentrate Fed | 217 parlour & 868 kgTMR | |
| | | | |