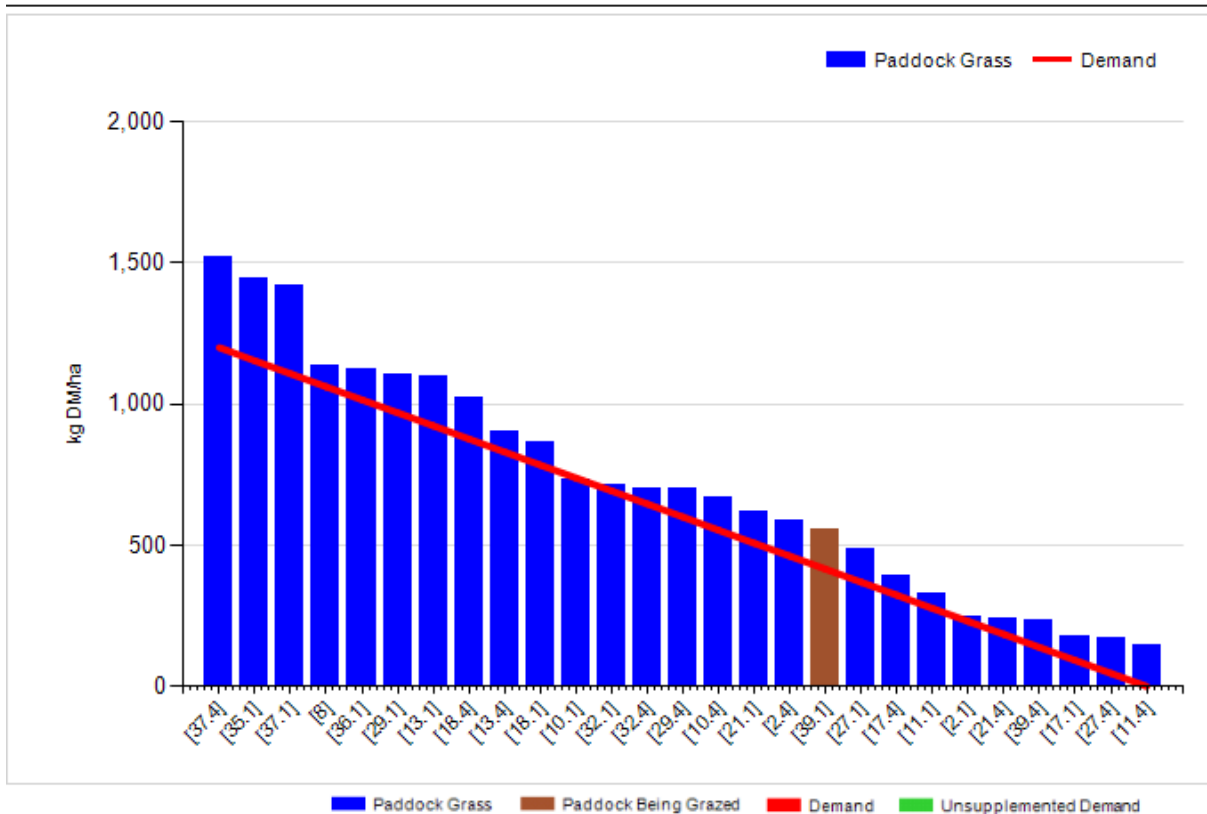


## Johnstown Castle Winter Milk Herd- Weekly Management Notes – 07/03/16

- The very unsettled weather late last week resulted in only a couple of grazing bouts, with cows housed fulltime for the remainder (Sunday & Today were quite good). We are well off our target areas grazed, but as mentioned previously, we are not prepared to damage paddocks, when it's not necessary. When conditions improve we will graze as much area as possible, as quick as possible. Total rainfall for the past week was 29.5mm, but this was enough to keep "soft ground" wet, average soil temperature were back to 5.1 °C. The low soil temperatures over the past few weeks coupled with wet ground & a delay in the second round of fertilizer has seen a noticeable change in sward colour, some paddocks more yellow/purple tinge as opposed to the lush green of a month ago.
- The second round of fertilizer will go out as soon as conditions improve, probably looking at spreading 40kgsN/ha at this stage over all plots, bar those targeted for slurry in the next 10 days.
- The autumn herd continue to perform well, but are anxious to get to grass in the mornings, we will have all our maize gone this week (we prefer to run out, than to have a small amount left over which results in wastage of either grass or maize), we have good stocks of silage & some very good quality surplus bales which we plan to feed to milking cows when indoors.
- We have 80% of the spring herd calved to date, as expected the remaining 20% will be a slow drag for the next month. Spring cows are only settling in, but protein % is disappointing but not surprising, given the lack of grass in the diet.

### Cover Parameters

Grass Allocation/LU (kg DM/LU):	7.0	Growth Rate:	13
Total Livestock (LU):	60.0	Farm Demand (kg DM/ha/day):	20
Farm Cover (kg DM/ha):	724	Target Pre-grazing yield (kg DM/ha):	1200
Farm Cover (kg DM/LU):	249	Days Ahead:	36
Stocking Rate (LU/ha):	2.91	LW/ha (Liveweight/ha):	



Spring Rotation Plan	Target	Actual
% farm grazed by 7 <sup>th</sup> Mar	48%	36%
Pre-grazing cover	1200	1100
Post grazing height (cm)	3.5	4.1
% grazed by 14 <sup>th</sup> Mar	63% - Original target	
% grazed by 14 <sup>th</sup> Mar	50% - Realistic target now	

### Milk production and feed details

	<i>This week (07/03/16)</i>	Autumn Calving Section	Spring Calving Section
<b>Production</b>	% of Herd Milking	100	80%
	Milk Kg	26.9	25.1
	Fat %	4.65	4.19
	Protein %	3.58	3.17
	Milk Solids kg	2.16	1.88
<b>Intake</b>	Grazed Grass kgs/dm/cow	7	6.5
	Silage kgs/dm/cow	5	5
	Maize silage kgs/dm/cow	3	3
	Concentrate in TMR – kgs/dm/cow	4.8	0
	Parlour concentrate kgs/dm/cow	0.8	2.5
<b>Totals</b>	<b>Lactation to date per cow</b>	Mean calving date 6 <sup>th</sup> Oct	Mean calving date – cows calved 10 <sup>th</sup> Feb
	Days in Milk	153	24
	Milk kg	4094	565
	Milk Solids kg	309	43
	Concentrate Fed	230 parlour & 928 kgTMR	84kgs