

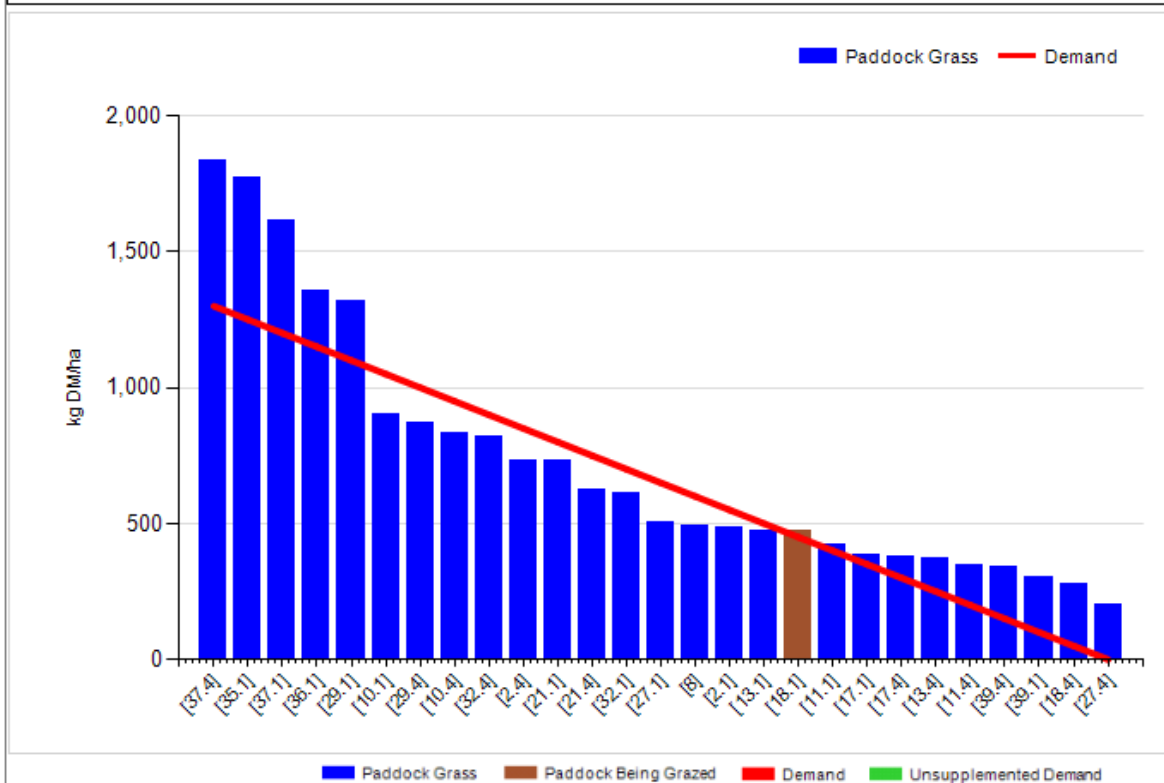
## Johnstown Castle Winter Milk Herd- Weekly Management Notes – 14/03/16

- Thankfully we finally seem to have hit a settled spell of weather, we've moved to some of the heavier ground (which have the heavier covers also), if grazing conditions remain good for this week we will graze night & day, as things stand we would not have adequate grass to remain grazing fulltime for the remainder of the 1<sup>st</sup> round, but we would like to get through some more area & the heavier covers on the wetter ground when conditions are good. Total rainfall for the past week was 10.2mm, soil temperatures have lifted significantly 7.2 °C average for the past week, the forecast of cold easterly winds, would hit us hard in this area, in terms of grass growth, but at least they will bring good drying conditions which is needed.
- Most of the second round of fertilizer has gone out over the past few days - 40kgsN/ha. Hope to get some slurry on paddocks grazed in the last few days.
- The autumn herd are over half way through their lactation, Condition score has dropped by about .1 of a B.CS in the past few weeks, not overly concerned as cows should be in-calf (or not!) at this stage, breeding finished 3 weeks ago. All maize & 1<sup>st</sup> cut pit silage is now finished, we will use up our baled silage (made from surplus grass) next & if we need to, we have 2<sup>nd</sup> cut pit silage available – this is poorer quality ~70DMD.
- No cows calved in the past week & the remainder are stubbornly slow to shows signs of springing so we're still around the 80% mark, bulk tank protein % starting to lift a bit, with more grass in the diet.

Rotation Length (days):	40	Silage Fed (kg DM/cow):	4.0
Grass Allocation/Cow (kg DM/cow):	13.0	Residual Height (cm):	4.0
No. of Cows:	60		
Concentrate Fed (kg/cow):	3.0		

### Cover Parameters

Grass Allocation/LU (kg DM/LU):	13.0	Growth Rate:	27
Total Livestock (LU):	60.0	Farm Demand (kg DM/ha/day):	38
Farm Cover (kg DM/ha):	722	Target Pre-grazing yield (kg DM/ha):	1300
Farm Cover (kg DM/LU):	248	Days Ahead:	19
Stocking Rate (LU/ha):	2.91	LW/ha (Liveweight/ha):	



Spring Rotation Plan	Target	Actual
% farm grazed by 14 <sup>th</sup> Mar	63% - Original target	51%
Pre-grazing cover	1200	1450
Post grazing height (cm)	3.5	4.0
% grazed by 21 <sup>st</sup> Mar	80% - Original target	
% grazed by 21 <sup>st</sup> Mar	70% - revised & realistic target	

### Milk production and feed details

	<i>This week (14/03/16)</i>	Autumn Calving Section	Spring Calving Section
<b>Production</b>	% of Herd Milking	100	80%
	Milk Kg	24.9	25.4
	Fat %	4.64	4.16
	Protein %	3.58	3.22
	Milk Solids kg	2.00	1.88
<b>Intake</b>	Grazed Grass kgs/dm/cow	14	13
	Silage kgs/dm/cow	3.5	3.5
	Maize silage kgs/dm/cow		
	Concentrate in TMR – kgs/dm/cow	3.0	0
	Parlour concentrate kgs/dm/cow	0.8	2.5
<b>Totals</b>	<b><i>Lactation to date per cow</i></b>	Mean calving date 6 <sup>th</sup> Oct	Mean calving date – cows calved 10 <sup>th</sup> Feb
	Days in Milk	160	31
	Milk kg	4277	742
	Milk Solids kg	324	55
	Concentrate Fed	236 parlour & 954 kgTMR	98kgs