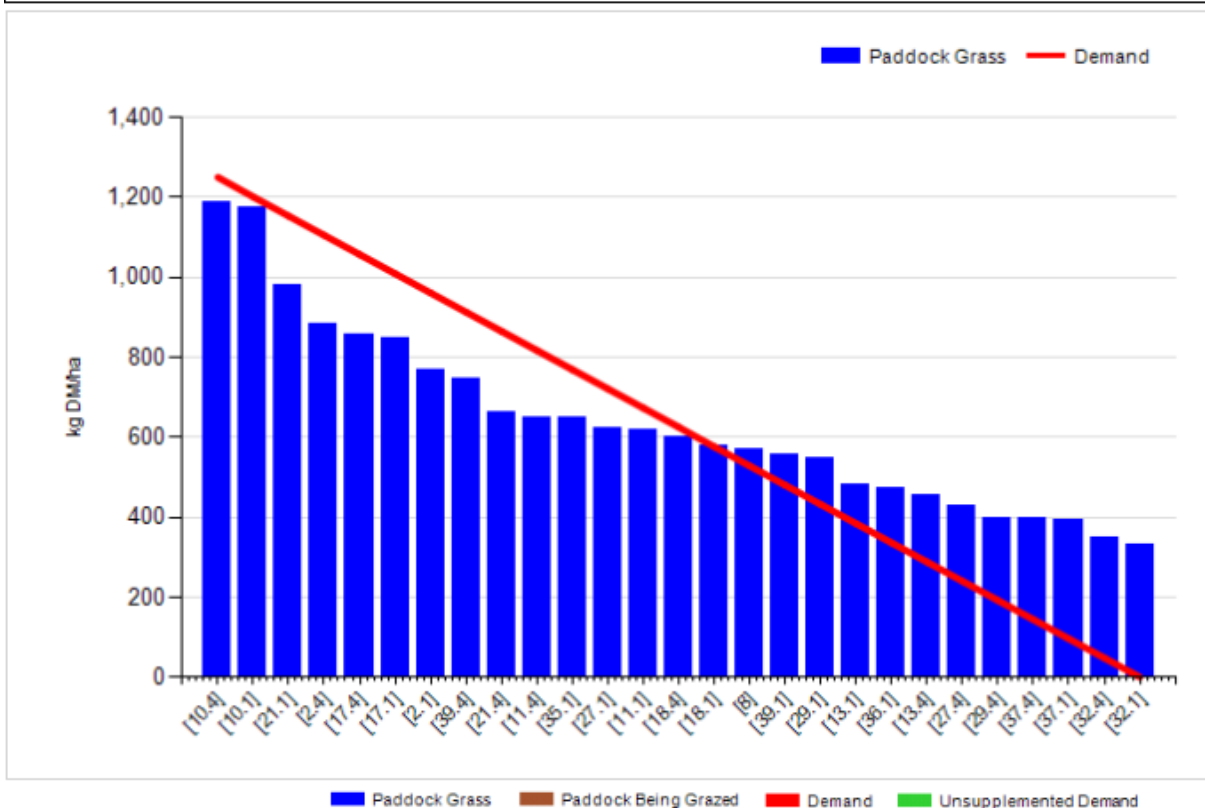


Johnstown Castle Winter Milk Herd- Weekly Management Notes – 28/03/16

- The past week brought a return to the unsettled weather to which we were used to. Total rainfall of 19.3 mm, and soil temperatures of 7.3 °C. The rainfall although not a lot, was enough to make conditions messy again. We had decided to house by night since the 24th March, due to a shortage of grass & in order to try stretch the 1st round out till 5th April. Cows are getting approx 8kgs DM of good quality bales silage, total of 5kgs DM of concentrate & approx 7kgs DM of grass. Bales will be finished by 31st March, so we'll be back to 2nd cut pit silage (~70 DMD), which is not ideal, but hopefully will only be for a week or so. As can be seen from the graph, a lot of the grazed covers have between 500-700kgs, the swards look green, healthy & ready to take off, just need to get them over at least 1000kgs before 2nd round starts
- We're not spreading slurry after the cows since last Thursday, due to ground conditions & also we would hope to be back grazing some of these paddocks within 30 days, so slurry might contaminate the grass a bit too much. With the mixed weather & recent poor growth rates, we won't have a definite plan on silage fields for another couple of weeks, we have flexibility in terms of which fields we close up, so we plan to just spread a grazing application on all ground next week (3rd application) & will top up silage fields when were sure.
- We re-housed the autumn in-calf heifers (lowest priority stock) , as they were messing a lot of grass & marking fields, Spring bulling heifers & Autumn calves are still out. Spring bulling heifers just about on target – 330kgs, we'd like them to average 350kgs at bulling (3 weeks), if they can stay out at grass in reasonable conditions this should be achievable - See attached table

Cover Parameters

Grass Allocation/LU (kg DM/LU):	8.0	Growth Rate:	27
Total Livestock (LU):	60.0	Farm Demand (kg DM/ha/day):	23
Farm Cover (kg DM/ha):	638	Target Pre-grazing yield (kg DM/ha):	1250
Farm Cover (kg DM/LU):	219	Days Ahead:	28
Stocking Rate (LU/ha):	2.91	LW/ha (Liveweight/ha):	



Spring Rotation Plan	Target	Actual
% farm grazed by 28 th Mar	95% - Original target	85%
Pre-grazing cover	1250	800
Post grazing height (cm)	3.5	3.5
% grazed by 4 th April	108% - Original target	
% grazed by 4 th April	100% - plan to finish 1 st round on 5 th April	

	<i>This week (28/03/16)</i>	Autumn Calving Section	Spring Calving Section
Production	% of Herd Milking	100	90%
	Milk Kg	22.1	26.5
	Fat %	4.29	3.96
	Protein %	3.63	3.19
	Milk Solids kg	1.75	1.90
Intake	Grazed Grass kgs/dm/cow	8	8
	Silage kgs/dm/cow	7	7
	Maize silage kgs/dm/cow		
	Concentrate in TMR – kgs/dm/cow	2.0	2
	Parlour concentrate kgs/dm/cow	3.0	3.0
Totals	<i>Lactation to date per cow</i>	Mean calving date 6 th Oct	Mean calving date – cows calved 16 th Feb
	Days in Milk	174	43
	Milk kg	4604	984
	Milk Solids kg	349	71
	Concentrate Fed	273 parlour & 984 kgTMR	116kgs

Replacement Weights

Group	Spring Born 2014 D.O.B: 25/02/14 Avg EBI: 205	Autumn Born 2014 D.O.B: 3/10/14 Avg EBI: 221	Spring Born 2015 D.O.B: 17/02/15 Avg EBI: 230	Autumn Born 2015 D.O.B: 01/10/15 Avg EBI:	Spring Born 2016 D.O.B: 09/02/16 Avg EBI:
Birth	39	39	36	41	37
22-Jul-14	155				
22-Sep-14	226				
11-Dec-14					
6-Feb-15	297				
21-Apr-15	391 (breeding)	186			
28-Jul-15	471	288	158		
31-Aug-15	518	317	191		
30-Sep-15	549	351	220		
11-Dec-15	589	381	267	93	
20-Jan-16	615	403	294	136	
30-Mar-16		441	330	183	