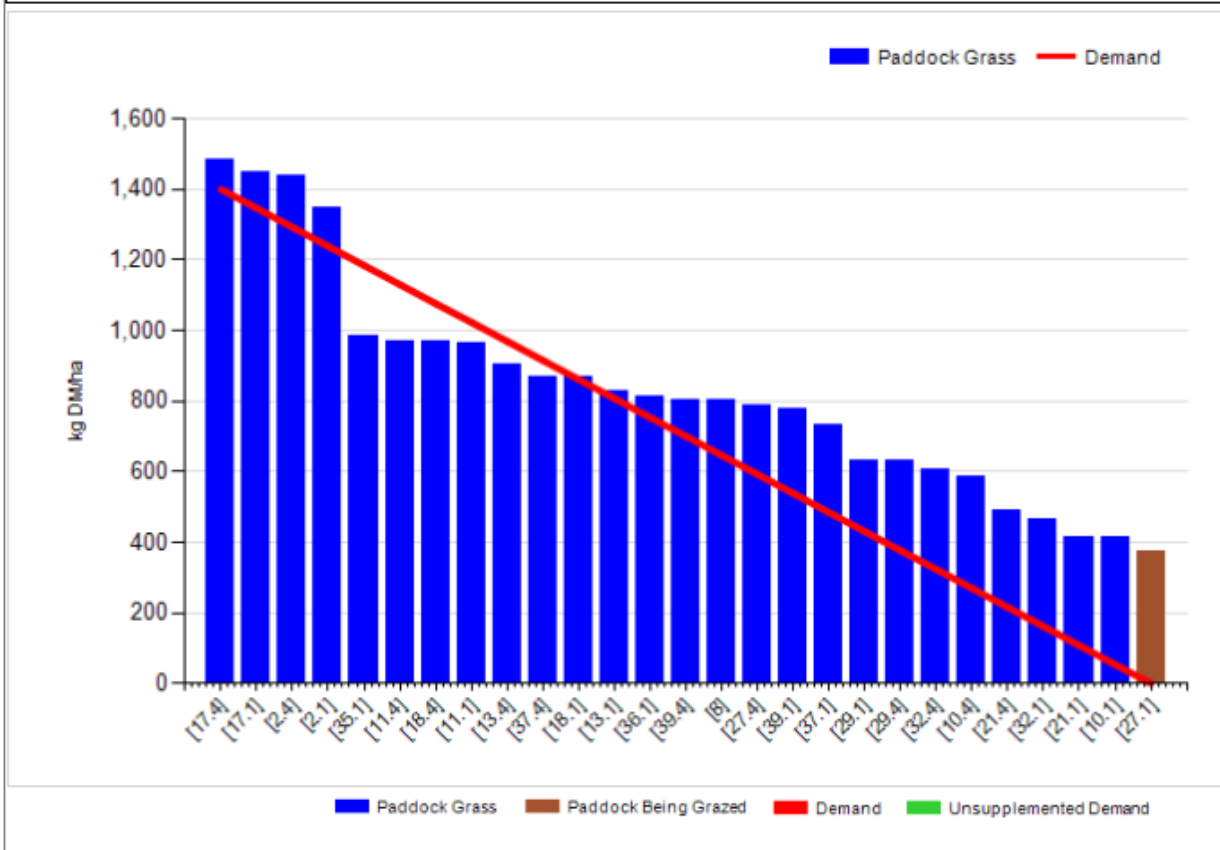


## Johnstown Castle Winter Milk Herd- Weekly Management Notes – 11/04/16

- Rainfall for the past week (24.5mm, soil temp 8.1 °C) wasn't excessive, but conditions have still been very disagreeable for grazing, & ground is pretty much saturated, we're managing to get out for "a day" grazing bout on most days.
- We're moving onto previously grazed paddocks now (2<sup>nd</sup> round), these are inclined to hold rain where they were previously marked, so we badly need drier weather in order to stay grazing, even on-off grazing. Hopefully the tentative forecast of improved weather by the weekend will follow through.
- Still no fertiliser spread for April (we were due to go with ~35kgN/ha on the 4<sup>th</sup> April, but conditions were too wet). Some paddocks are beginning to show a hungry reddish colour again – probably a combination of lower than normal soil temp, wet ground & lack of Nitrogen.
- Both autumn & spring groups are holding well in terms of yield, but this is coming at a cost (feeding 5kgs concentrate/cow/day). Milk protein % are poor, which isn't surprising given the high proportion of average quality (69-70DMD) silage in the diet.

### Cover Parameters

Grass Allocation/LU (kg DM/LU):	8.0	Growth Rate:	29
Total Livestock (LU):	60.0	Farm Demand (kg DM/ha/day):	23
Farm Cover (kg DM/ha):	845	Target Pre-grazing yield (kg DM/ha):	1400
Farm Cover (kg DM/LU):	290	Days Ahead:	37
Stocking Rate (LU/ha):	2.91	LW/ha (Liveweight/ha):	



	<b><i>This week (11/04/16)</i></b>	<b>Autumn Calving Section</b>	<b>Spring Calving Section</b>
<b>Production</b>	% of Herd Milking	100%	100%
	Milk Kg	23.2	26.8
	Fat %	4.64	4.36
	Protein %	3.59	3.15
	Milk Solids kg	1.89	2.01
<b>Intake</b>	Grazed Grass kgs/dm/cow	8	8
	Silage kgs/dm/cow	7	7
	Maize silage kgs/dm/cow		
	Concentrate in TMR – kgs/dm/cow		
	Parlour concentrate kgs/dm/cow	5.0	5.0
<b>Totals</b>	<b><i>Lactation to date per cow</i></b>	Mean calving date 6 <sup>th</sup> Oct	Mean calving date – cows calved 16 <sup>th</sup> Feb
	Days in Milk	188	57
	Milk kg	4934	1324
	Milk Solids kg	376	100
	Concentrate Fed	329 parlour & 998 kgTMR	159kgs

The following is the output of Sire Advice program for your herd.

	EBI(E)	EBI Sub Index							PTA's						CI days	SU %
		Milk (E)	Fert (E)	Calv (E)	Beef (E)	Maint (E)	Mmgt (E)	Hith (E)	M Kg	F Kg	P Kg	F+P Kg	F %	P %		
<b>All Cows in Herd</b>	<b>183</b>	56	98	29	-6	0	2	2	143	10.7	8.7	19.4	0.10	0.08	-5.4	2.5
<b>Predicted 2017 Calves</b>	<b>272</b>	89	145	39	-10	5	2	0	180	16.6	13.2	29.8	0.18	0.14	-8.1	3.8
<b>Bulls Weighted Averages</b>	<b>360</b>	122	193	49	-14	11	1	-1	218	22.5	17.8	40.3	0.26	0.20	-10.7	5.0

### Replacement Weights

<b>Group</b>	<b>Spring Born 2014</b> D.O.B: 25/02/14 Avg EBI: 205	<b>Autumn Born 2014</b> D.O.B: 3/10/14 Avg EBI: 221	<b>Spring Born 2015</b> D.O.B: 17/02/15 Avg EBI: 230	<b>Autumn Born 2015</b> D.O.B: 01/10/15 Avg EBI:	<b>Spring Born 2016</b> D.O.B: 09/02/16 Avg EBI:
Birth	39	39	36	41	37
22-Jul-14	155				
22-Sep-14	226				
11-Dec-14					
6-Feb-15	297				
21-Apr-15	391 (breeding)	186			
28-Jul-15	471	288	158		
31-Aug-15	518	317	191		
30-Sep-15	549	351	220		
11-Dec-15	589	381	267	93	
20-Jan-16	615	403	294	136	
30-Mar-16		441	330	183	