

Johnstown Castle Winter Milk Herd- Weekly Management Notes

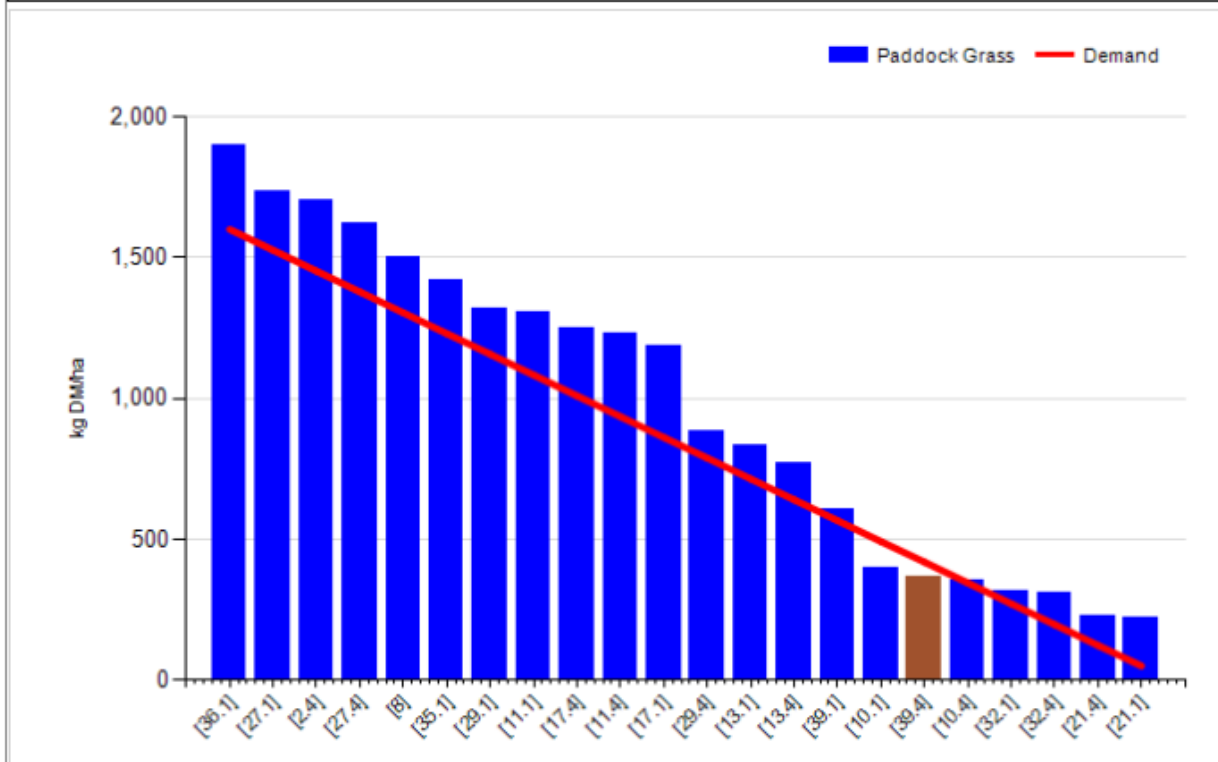
12/09/16

- Rainfall for the past 7 days was 24.5mm, with a soil temp of 16.4°C, not a massive amount of rain, but very poor drying conditions has left the ground a bit sticky. With significant rainfall forecast for Monday-Wednesday grazing conditions will start to get more challenging. If it gets very wet we'll move to 12 hour allocations and won't follow the milkers with dry cows if necessary.
- Calving has begun, two weeks earlier than due date, with a cow carrying twins & 1st calved heifer calving over the weekend, we'll have more over the next few days. Cows within 2-3 weeks of calving come into the calving paddock as outlined last week.
- We had no day over the past week, where we could have taken out the surplus silage paddocks. We have two on the 100% Autumn herd & one on the split calving herd, which need to be cut, it's not likely to happen this week either based on forecast, which isn't ideal, as we need to be getting them back into rotation.
- Our last round of fertiliser has gone out over the last week -all areas getting 30kgs/N/ha, which brings us up to a total of ~250kgs/N/Ha for the year on cow grazing areas (overall S.R 3.0)

Rotation Length (days):	29	Silage Fed (kg DM/cow):	0.0
Grass Allocation/Cow (kg DM/cow):	18.0	Residual Height (cm):	4.2
No. of Cows:	0		
Concentrate Fed (kg/cow):	0.0		

Cover Parameters

Grass Allocation/LU (kg DM/LU):	12.0	Growth Rate:	42
Total Livestock (LU):	65.0	Farm Demand (kg DM/ha/day):	48
Farm Cover (kg DM/ha):	991	Target Pre-grazing yield (kg DM/ha):	1600
Farm Cover (kg DM/LU):	249	Days Ahead:	21
Stocking Rate (LU/ha):	3.98	LW/ha (Liveweight/ha):	2385



	<i>This week (12/09/16)</i>	Autumn Calving Herd	Spring Calving Herd
Production	% of Herd Milking	0%	100%
	Milk Kg		15.6
	Fat %		4.20
	Protein %		3.83
	Milk Solids kg		1.25
Intake	Grazed Grass kgs/dm/cow	13	18
	Silage kgs/dm/cow	0	0
	Maize silage kgs/dm/cow		0
	Concentrate in TMR – kgs/dm/cow		
	Parlour concentrate kgs/dm/cow	0	0
Totals	<i>Lactation to date per cow</i>	Mean calving date 6 th Oct	Mean calving date 17 th Feb
	Days in Milk	307	210
	Milk kg	7261	4871
	Milk Solids kg	563	363
	Concentrate Fed	736 parlour & 740 kgTMR	335kgs

Replacement Weights

Group	Autumn 2013 D.O.B: 8/10/13 Avg EBI: 206	Spring 2014 D.O.B: 25/02/14 Avg EBI: 205	Autumn 2014 D.O.B: 3/10/14 Avg EBI: 221	Spring 2015 D.O.B: 17/02/15 Avg EBI: 230	Autumn 2015 D.O.B: 01/10/15 Avg EBI: 232	Spring 2016 D.O.B: 09/02/16 Avg EBI: 253
Birth	38	39	39	36	41	37
28-May-14	216					
22-Jul-14	284	155				
22-Sep-14	335	226				
11-Dec-14	377 (breeding)					
6-Feb-15		297				
21-Apr-15	468	391 (breeding)	186			
28-Jul-15	562	471	288	158		
31-Aug-15	597	518	317	191		
30-Sep-15		549	351	220		
11-Dec-15		589	381 (breeding)	267	93	
20-Jan-16		615	403	294	136	
30-Mar-16			441	330	183	
25-Apr-16			445	351 (breeding)	203	
10-Jun-16			503	404	258	129
12-Jul-16			527	417	279	166
24-Aug-16			579	471	309	208