

Johnstown Castle Winter Milk Herd- Weekly Management Notes

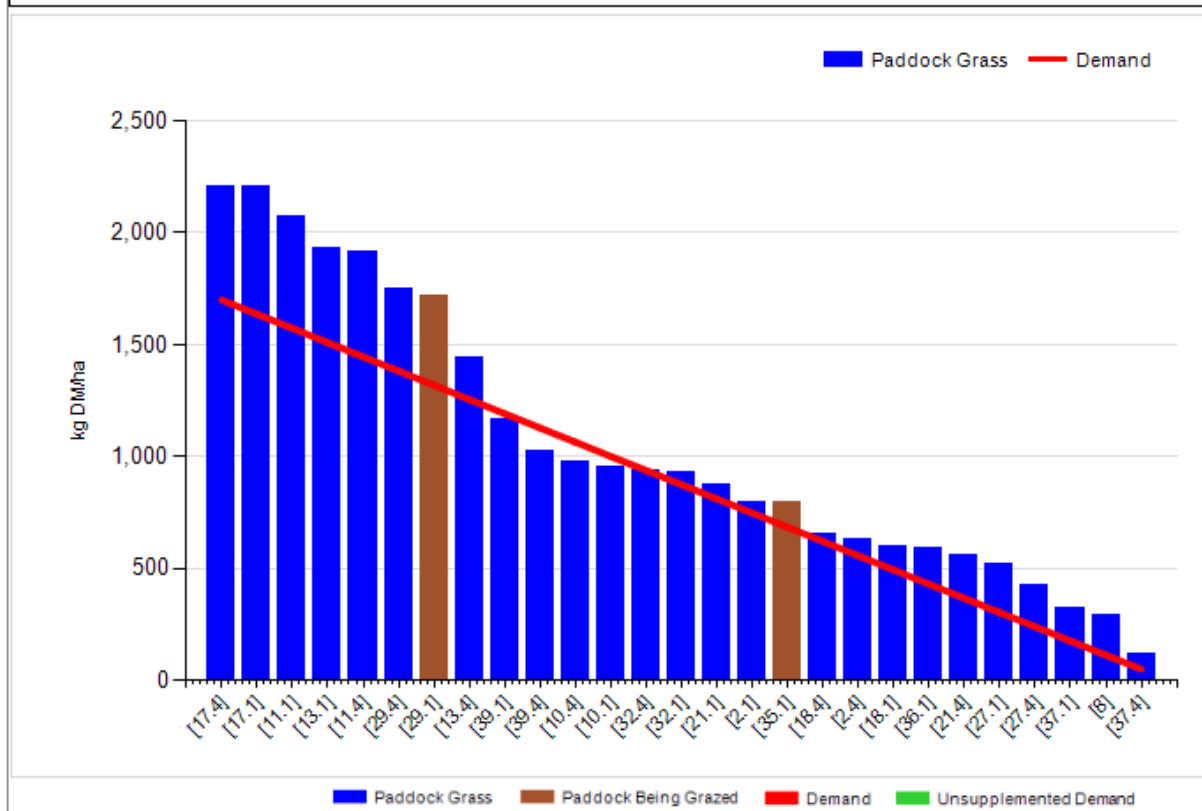
26/09/16

- Rainfall for the past 7 days was 28.9mm, soil temp has dropped back to 14.0°C. Grazing conditions have gotten quite sticky over the past few days. We are grazing heavier covers than we would like (>2000kgs/ha) and this is putting a bit more pressure on the ground. We've a few paddocks where cleanout was not what we'd like, but we'd prefer to move on & avoid too much damage & hopefully get a good grazing on these in the last round. Due to ground conditions, Dry cows are not following the milkers at the moment.
- Calving is going well with approx. 34% of the autumn herd calved to date. Our calving paddock has cut up badly over the past week, were not that concerned about this as it's a very small area but if it gets really bad, we could house them. We'd far prefer to calve outdoors for at least another 3-4 weeks, at which stage we should have 75-80% calved.
- Obviously conditions weren't suitable for taking out our surplus paddock on the autumn herd, we've skipped this paddock & we'll see how things go over the next week or so. As can be seen from our grazing report were carrying too much grass on this treatment, ideally we'd be happier with a cover of 300/LU or 900kg/ha at this stage

Rotation Length (days):	33	Silage Fed (kg DM/cow):	0.0
Grass Allocation/Cow (kg DM/cow):	14.0	Residual Height (cm):	4.2
No. of Cows:	22		
Concentrate Fed (kg/cow):	2.0		

Cover Parameters

Grass Allocation/LU (kg DM/LU):	12.7	Growth Rate:	48
Total Livestock (LU):	60.0	Farm Demand (kg DM/ha/day):	37
Farm Cover (kg DM/ha):	1014	Target Pre-grazing yield (kg DM/ha):	1700
Farm Cover (kg DM/LU):	348	Days Ahead:	27
Stocking Rate (LU/ha):	2.91	LW/ha (Liveweight/ha):	1106



	<i>This week (26/09/16)</i>	Autumn Calving Herd	Spring Calving Herd
Production	% of Herd Milking	30%	100%
	Milk Kg		15.4
	Fat %		4.21
	Protein %		3.97
	Milk Solids kg		1.26
Intake	Grazed Grass kgs/dm/cow (estimate)	11	17
	Silage kgs/dm/cow	0	0
	Maize silage kgs/dm/cow		0
	Concentrate in TMR – kgs/dm/cow		
	Parlour concentrate kgs/dm/cow	2	2
Totals	<i>Lactation to date per cow</i>	Expected Mean calving date 8 th Oct	Mean calving date 17 th Feb
	Days in Milk		224
	Milk kg		5088
	Milk Solids kg		381
	Concentrate Fed		366kgs