

# Johnstown Castle Winter Milk Herd- Weekly Management Notes

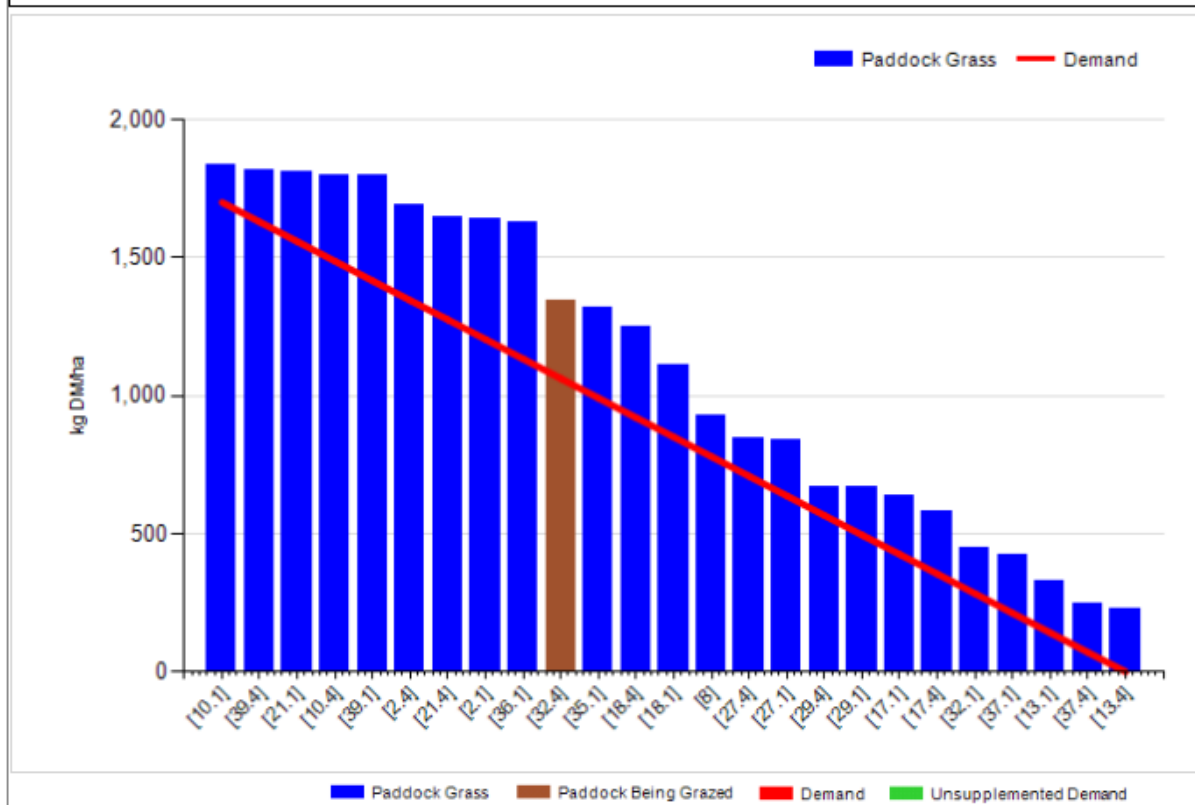
17/10/16

- Rainfall for the past 7 days was only 55.2mm, with a soil temp of 12.1°C. We had torrential rain Friday night & again on Saturday night, ground conditions are very difficult and some plots have been mucked up over the weekend. We decided to house the cows by night On Saturday & will keep them housed by night till Tuesday - forecast for the remainder of the week isn't bad & we still have approx. 2 weeks of fulltime grazing ahead, so we want to get back out fulltime as soon as possible. We're feeding very good quality surplus bales at night to the milking cows when housed – approx. 6kgs/Dm/cow
- 68% of autumn herd have now calved. With the rain over the weekend we housed the cows due to calve as well, hopefully we'll get them back out to the calving paddock within a couple of days.
- All of the very heavy covers on the grazing ground have been grazed at this stage & were back to more manageable covers of ~1800kgs/ha, for the autumn herd, however we still have too many covers around the 1600-1800kgs & cover/cow is much higher than we'd like at this stage. Approximately 35% of ground is closed at this stage on the autumn calving herd.

Rotation Length (days):	35	Silage Fed (kg DM/cow):	0.0
Grass Allocation/Cow (kg DM/cow):	14.0	Residual Height (cm):	4.2
No. of Cows:	41		
Concentrate Fed (kg/cow):	3.5		

### Cover Parameters

Grass Allocation/LU (kg DM/LU):	13.4	Growth Rate:	34
Total Livestock (LU):	60.0	Farm Demand (kg DM/ha/day):	41
Farm Cover (kg DM/ha):	1136	Target Pre-grazing yield (kg DM/ha):	1700
Farm Cover (kg DM/LU):	366	Days Ahead:	28
Stocking Rate (LU/ha):	3.10	LW/ha (Liveweight/ha):	590



	<b><i>This week (17/10/16)</i></b>	<b>Autumn Calving Herd</b>	<b>Spring Calving Herd</b>
<b>Production</b>	% of Herd Milking	68%	100%
	Milk Kg	24.6	15.0
	Fat %	4.53	4.79
	Protein %	3.39	3.88
	Milk Solids kg	1.96	1.29
<b>Intake</b>	Grazed Grass kgs/dm/cow (estimate)	7	9
	Silage kgs/dm/cow	6 (for 4 nights)	6 (for 4 nights)
	Maize silage kgs/dm/cow	0	0
	Concentrate in TMR – kgs/dm/cow	0	0
	Parlour concentrate kgs/dm/cow	3	2
<b>Totals</b>	<b><i>Lactation to date per cow</i></b>	Expected Mean calving date 8 <sup>th</sup> Oct	Mean calving date 17 <sup>th</sup> Feb
	Days in Milk	22	245
	Milk kg	617	5375
	Milk Solids kg	49.6	406
	Concentrate Fed	78	406kgs