

Johnstown Castle Winter Milk Herd- Weekly Management Notes

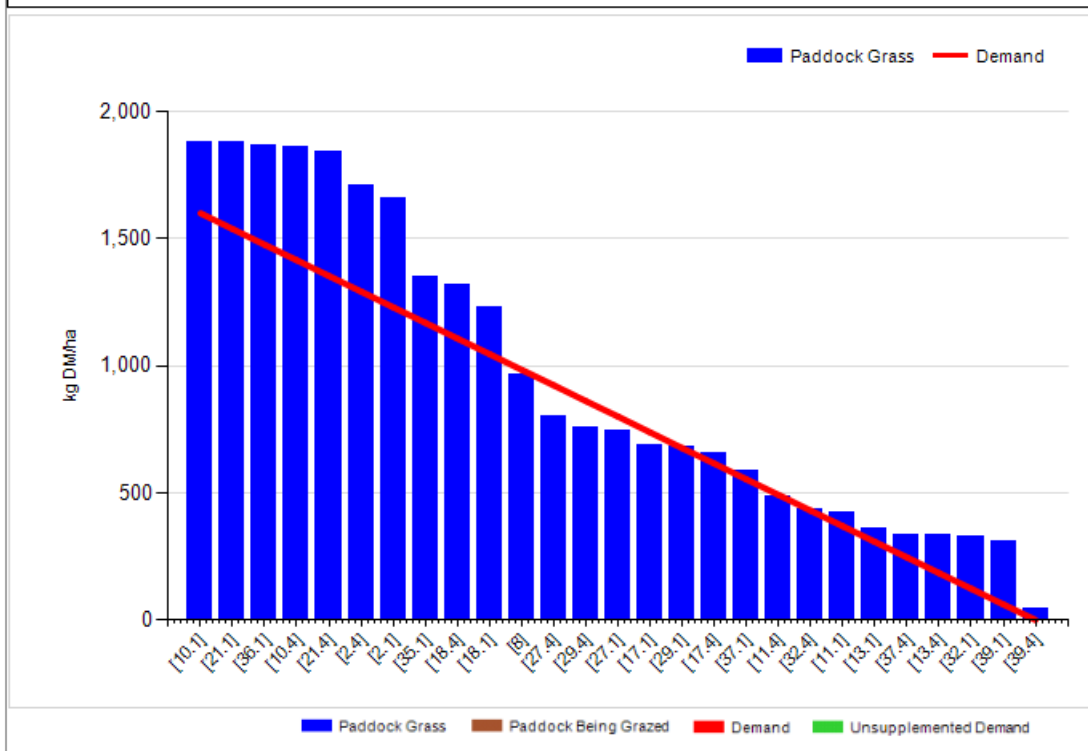
24/10/16

- We've had very good conditions since last Monday, after the torrential rain of the previous weekend, grazing conditions are excellent for the time of year with rainfall of just 1.2mm, soil temp has dropped significantly to 10.7°C. Growth has dropped well back with the few cold nights of last week, this suits us fine on the autumn herd as we're well above target covers.
- We have ~52% of the farm grazed off & closed up at present, we might struggle to get to the 70% target by end of October but we won't be far off. We need to keep grazing the heavier covers of ~1800kgs when conditions remain good. We would still like to be housing by night within the first week of November and fulltime by the 15th.
- The number of dry cows available to graze off heavy covers or to clean out after the milking herd is small now (75% milking, 10% in calving paddock, leaving only 15% to graze the less favourable grass).
- Calving going well, with no problems, but things have slowed up a lot, the remaining 25% of the herd will drag out until the end of November. We have approx. 2 weeks grass remaining in the calving plot, at that stage all remaining in-calf cows will be housed & will get medium quality silage ad-lib with pre-calver minerals on the silage.

Rotation Length (days):	35	Silage Fed (kg DM/cow):	0.0
Grass Allocation/Cow (kg DM/cow):	14.0	Residual Height (cm):	4.2
No. of Cows:	46		
Concentrate Fed (kg/cow):	3.5		

Cover Parameters

Grass Allocation/LU (kg DM/LU):	13.5	Growth Rate:	12
Total Livestock (LU):	60.0	Farm Demand (kg DM/ha/day):	39
Farm Cover (kg DM/ha):	988	Target Pre-grazing yield (kg DM/ha):	1600
Farm Cover (kg DM/LU):	340	Days Ahead:	25
Stocking Rate (LU/ha):	2.91	LW/ha (Liveweight/ha):	408



	<i>This week (24/10/16)</i>	Autumn Calving Herd	Spring Calving Herd
Production	% of Herd Milking	76%	100%
	Milk Kg	23.8	15.6
	Fat %	4.33	4.60
	Protein %	3.48	3.87
	Milk Solids kg	1.86	1.32
Intake	Grazed Grass kgs/dm/cow (estimate)	15	15
	Silage kgs/dm/cow	0	0
	Maize silage kgs/dm/cow	0	0
	Concentrate in TMR – kgs/dm/cow	0	0
	Parlour concentrate kgs/dm/cow	3	2
Totals	<i>Lactation to date per cow</i>	Expected Mean calving date 8 th Oct	Mean calving date 17 th Feb
	Days in Milk	28	252
	Milk kg	765	5550
	Milk Solids kg	62.8	427
	Concentrate Fed	92	417kgs