

Weekly update Clonakilty Dairy – 01 September 2014

Tetraploid swards (2.75 cows/ha)



Date Produced: 03-09-2014

PastureBase-Ireland

Grass Measurement Report

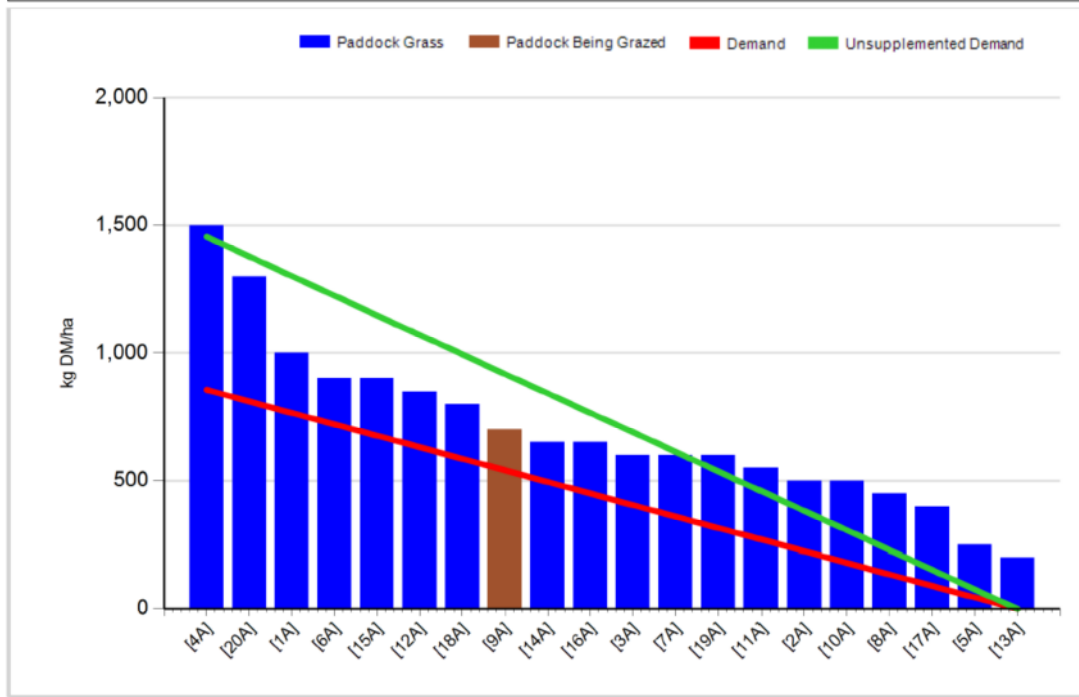
Group:	Cover Date: 01/09/2014
Farm: Clonakilty Farm	Treatment: T

Management Decisions

Rotation Length (days):	31	Silage Fed (kg DM/cow):	7.0
Grass Allocation/Cow (kg DM/cow):	10.0	Residual Height (cm):	4.0
No. of Cows:	30		
Concentrate Fed (kg/cow):	0.0		

Cover Parameters

Grass Allocation/LU (kg DM/LU):	10.0	Growth Rate (kg/ha/day):	74
Total Livestock (LU):	30.0	Farm Demand (kg DM/ha/day):	28
Farm Cover (kg DM/ha):	715	Target Pre-grazing yield (kg DM/ha):	856
Farm Cover (kg DM/LU):	259	Days Ahead:	26
Stocking Rate (LU/ha):	2.76	LW/ha (Liveweight/ha):	0



1. Average farm cover (AFC) is 715 kg DM/ha (259 kg DM/LU)
2. Growth rate last week was 74 kg DM/ha per day
3. Stocking rate is 2.76 LU/ha and demand is 28 kg DM/ha per day
4. Grass growth increased dramatically last week from 24 kg DM/ha per day the previous week to 76 kg DM/ha per day this week due to the rain and mild weather we got last week. Average farm cover has increased up to 715 kg DM/ha however we are still behind target so we will continue to

supplement with 7 kg of silage to increase our AFC to the target level. If growth is similar to last week we should be able to catch up and hopefully remove silage from the diet next week.

- Pre-grazing yield is 1500 and we are allocating 10 kg DM of grass per cow. Cows are being allocated 7 kg DM of silage, which they eat after morning and evening milking. No concentrate is being fed. Minerals are being given to the cows through the dosatron into the water. Cows are receiving Mg through the water.

Diploid swards (2.75 cows/ha)



Date Produced: 03-09-2014

PastureBase-Ireland

Grass Measurement Report

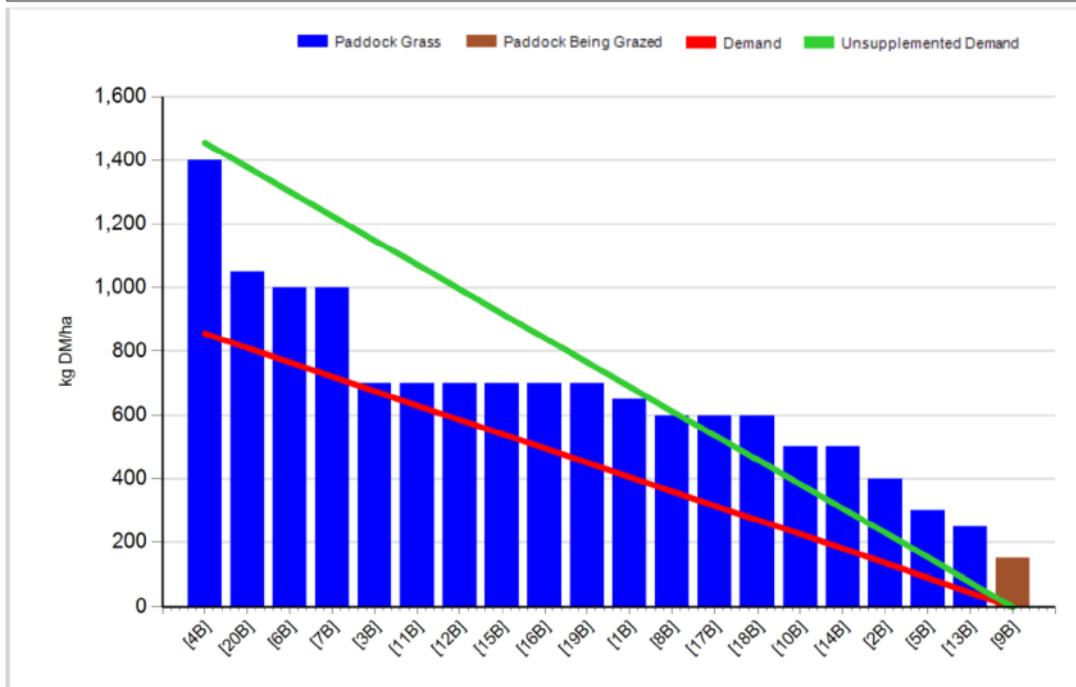
Group:	Cover Date: 01/09/2014
Farm: Clonakilty Farm	Treatment: D

Management Decisions

Rotation Length (days):	31	Silage Fed (kg DM/cow):	7.0
Grass Allocation/Cow (kg DM/cow):	10.0	Residual Height (cm):	4.0
No. of Cows:	30		
Concentrate Fed (kg/cow):	0.0		

Cover Parameters

Grass Allocation/LU (kg DM/LU):	10.0	Growth Rate (kg/ha/day):	76
Total Livestock (LU):	30.0	Farm Demand (kg DM/ha/day):	28
Farm Cover (kg DM/ha):	681	Target Pre-grazing yield (kg DM/ha):	856
Farm Cover (kg DM/LU):	247		
Stocking Rate (LU/ha):	2.76		



- Average farm cover 681 kg DM/ha (247 kg DM/LU)

2. Growth rate last week was 76kg DM/ha per day
3. Stocking rate is 2.76 LU/ha and demand is 28 kg DM/ha per day
4. Grass growth increased dramatically last week from 26 kg DM/ha per day the previous week to 76 kg DM/ha per day this week due to the rain and mild weather we got last week. Average farm cover has increased up to 681 kg DM/ha however we are still behind target so we will continue to supplement with 7 kg of silage to increase our AFC to the target level. If growth is similar to last week we should be able to catch up and hopefully remove silage from the diet next week.
5. Pre-grazing yield is 1400 and we are allocating 10 kg DM of grass per cow. Cows are being allocated 7 kg DM of silage after morning milking. No concentrate is being fed. Minerals are being given to the cows through the dosatron into the water. Cows are receiving Mg through the water.

Whole farm update

1. Cows are currently milking 17.5 kg/day at 4.76% fat, 4.06% protein and 4.55 % lactose. Milk solids per cow are 1.57 kg/day. Latest results from the processor 4.83% fat, 3.98% protein, 4.64% lactose 112 SCC and TBC is 3. Average bodyweight of milking cows is 511 kg and average body condition score is 2.88.
2. Average farm cover on the general area is 813 kg DM/ha (328 kg DM/LU). Demand is 37 kg DM/ha per day and growth rate on the general area last week was 70 kg DM/ha per day. Stocking rate is 2.48 LU/ha. General cows are receiving 3 kg concentrate/day to lower demand to increase AFC.
3. The calves are now all grazing together. They were weighed and vaccinated for IBR last week. Their average weight was 180 kg which is on target for this time of the year.
4. Breeding started on the 20th of April with the stock bulls being removed on Monday, the 14th of July, after a 12 week breeding season. 47 out of the 49 heifers are in-calf.
5. The last cows to be scanned were scanned on Monday. Overall empty rate was 10.5%.