

## Weekly update Clonakilty Dairy – 30 September 2014

### Tetraploid swards (2.75 cows/ha)



Date Produced: 01-10-2014

### PastureBase-Ireland

### Grass Measurement Report

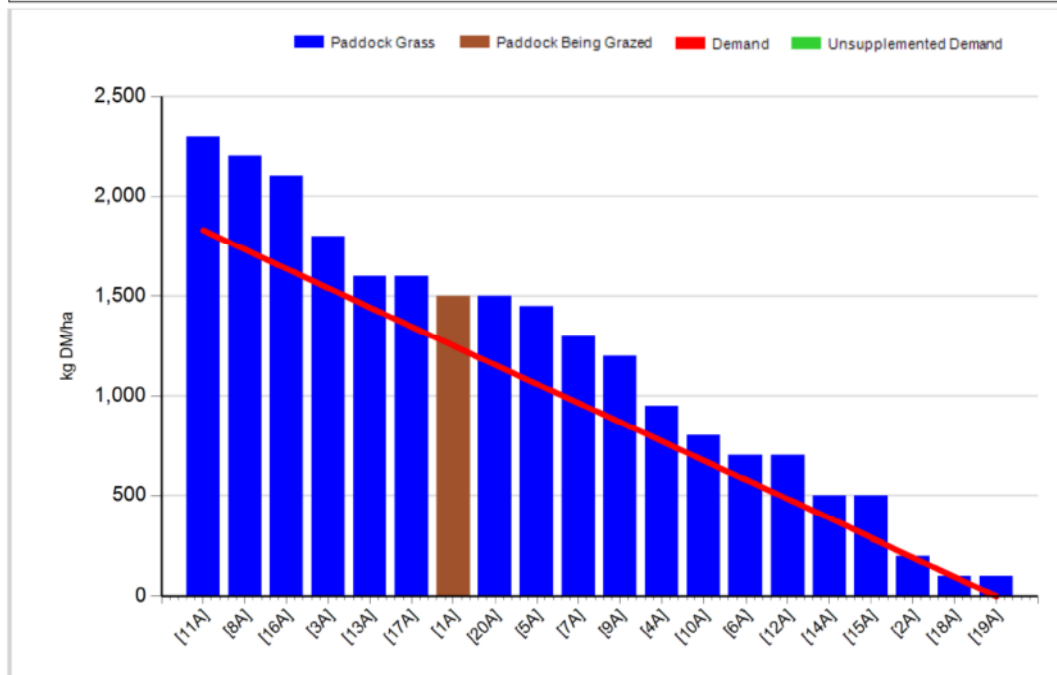
Group:	Cover Date: 30/09/2014
Farm: Clonakilty Farm	Treatment: T

#### Management Decisions

Rotation Length (days):	39	Silage Fed (kg DM/cow):	0.0
Grass Allocation/Cow (kg DM/cow):	17.0	Residual Height (cm):	4.0
No. of Cows:	30		
Concentrate Fed (kg/cow):	0.0		

#### Cover Parameters

Grass Allocation/LU (kg DM/LU):	17.0	Growth Rate (kg/ha/day):	58
Total Livestock (LU):	30.0	Farm Demand (kg DM/ha/day):	47
Farm Cover (kg DM/ha):	1169	Target Pre-grazing yield (kg DM/ha):	1830
Farm Cover (kg DM/LU):	424	Days Ahead:	25
Stocking Rate (LU/ha):	2.76	LW/ha (Liveweight/ha):	0



1. Average farm cover (AFC) is 1169 kg DM/ha (424 kg DM/LU)
2. Growth rate last week was 58 kg DM/ha per day
3. Stocking rate is 2.76 LU/ha and demand is 47 kg DM/ha per day
4. AFC has increased to 1169 kg DM/ha, which is ahead of target (see budget below) due to growth rate increasing to 58 kg DM/ha per day. We have stopped supplementing completely as we have reached our target AFC, we do not want to go any higher in terms of AFC as there would be

too much grass ahead of the cows and pre-grazing yields, which are too strong already, would get even stronger.

- Pre-grazing yield is 2300 and we are allocating 17 kg DM of grass per cow. Minerals are being given to the cows through the dosatron into the water.

## Diploid swards (2.75 cows/ha)



Date Produced: 01-10-2014

### PastureBase-Ireland

### Grass Measurement Report

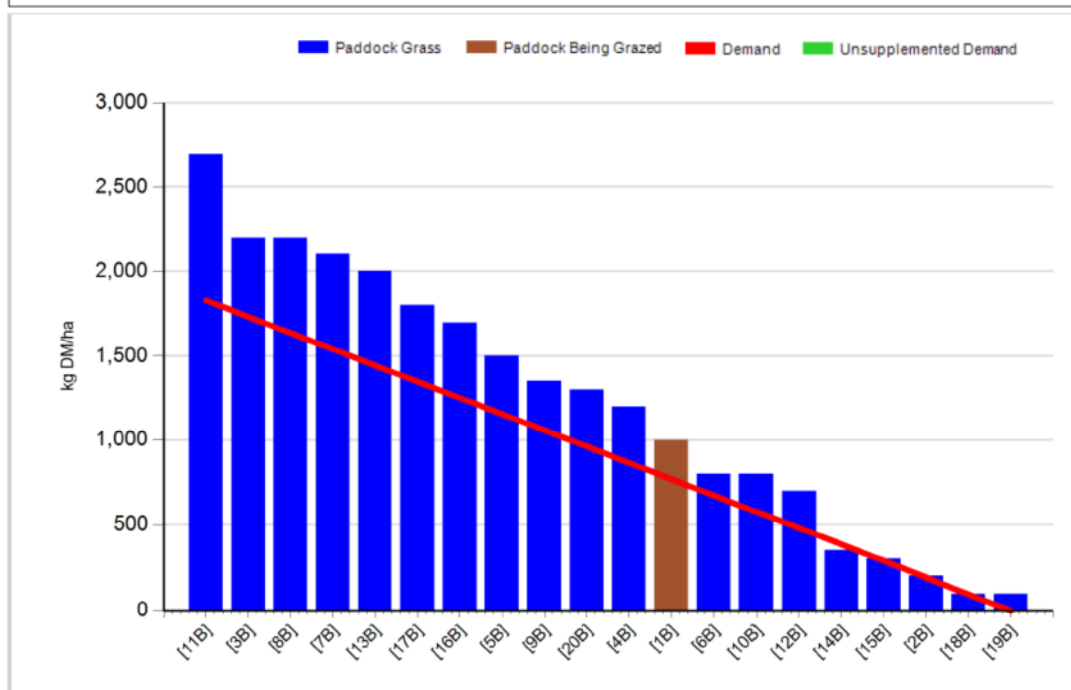
Group:	Cover Date: 30/09/2014
Farm: Clonakilty Farm	Treatment: D

#### Management Decisions

Rotation Length (days):	39	Silage Fed (kg DM/cow):	
Grass Allocation/Cow (kg DM/cow):	17.0	Residual Height (cm):	4.0
No. of Cows:	30		
Concentrate Fed (kg/cow):	0.0		

#### Cover Parameters

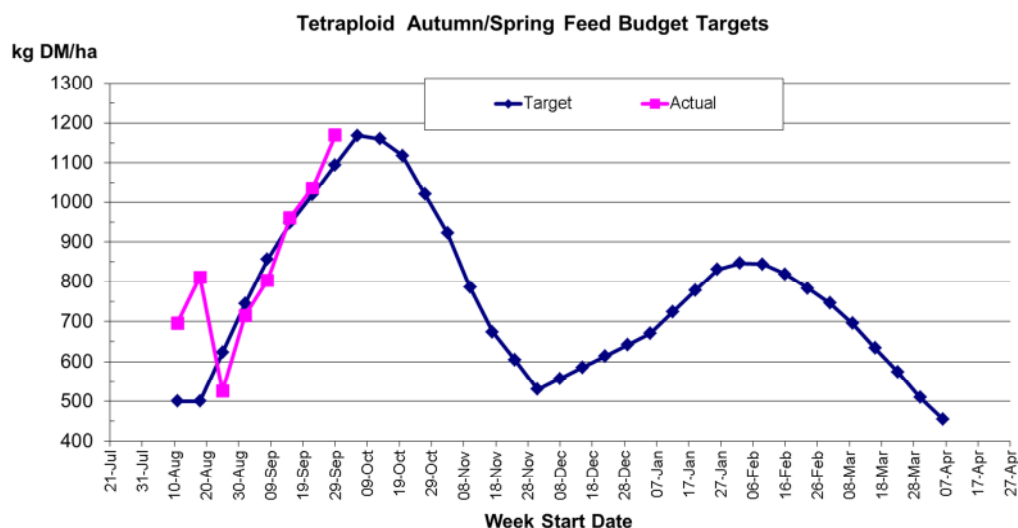
Grass Allocation/LU (kg DM/LU):	17.0	Growth Rate (kg/ha/day):	53
Total Livestock (LU):	30.0	Farm Demand (kg DM/ha/day):	47
Farm Cover (kg DM/ha):	1241	Target Pre-grazing yield (kg DM/ha):	1830
Farm Cover (kg DM/LU):	450		
Stocking Rate (LU/ha):	2.76		



- Average farm cover 1241 kg DM/ha (450 kg DM/LU)
- Growth rate last week was 53 kg DM/ha per day
- Stocking rate is 2.76 LU/ha and demand is 47 kg DM/ha per day
- AFC has increased to 1241 kg DM/ha, which is ahead of target (see budget below) due to growth rate increasing to 53 kg DM/ha per day. We have

stopped supplementing completely as we have reached our target AFC, we do not want to go any higher in terms of AFC as there would be too much grass ahead of the cows and pre-grazing yields, which are too strong already, would get even stronger.

- Pre-grazing yield is 2700 and we are allocating 17 kg DM of grass per cow. Minerals are being given to the cows through the dosatron into the water.



### Whole farm update

- Cows are currently milking 15.7 kg/day at 5.25% fat, 4.09% protein and 4.64% lactose. Milk solids per cow are 1.45 kg/day. Latest results from the processor 4.82% fat, 4.18 % protein, 4.67% lactose, 122 SCC and TBC is 3. Average bodyweight of milking cows is 524 kg and average body condition score is 2.88.
- Average farm cover on the general area is 1164 kg DM/ha (469 kg DM/LU). Demand is 37 kg DM/ha per day and growth rate on the general area last week was 72 kg DM/ha per day. Stocking rate is 2.48 LU/ha. General cows are receiving 1 kg concentrate/day.
- Breeding started on the 20<sup>th</sup> of April with the stock bulls being removed on Monday, the 14<sup>th</sup> of July, after a 12 week breeding season. 47 out of the 49 heifers are in-calf.
- Overall empty rate for the herd is 10.5% this year.