

Weekly update Clonakilty Dairy – 6 October 2014

Tetraploid swards (2.75 cows/ha)



Date Produced: 07-10-2014

PastureBase-Ireland

Grass Measurement Report

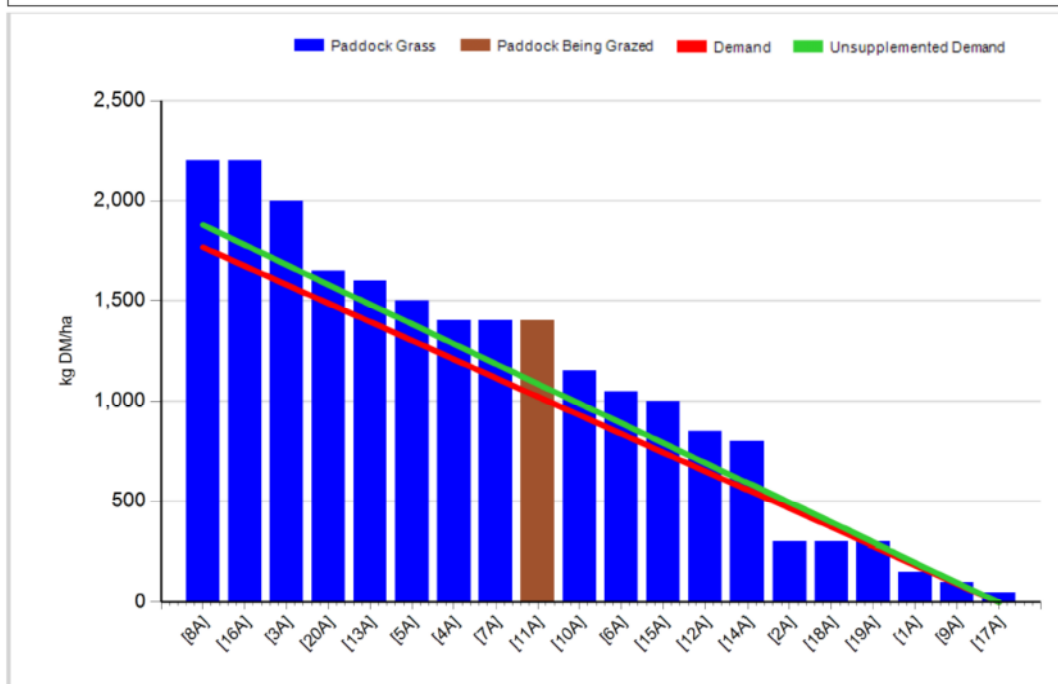
Group:	Cover Date: 06/10/2014
Farm: Clonakilty Farm	Treatment: T

Management Decisions

Rotation Length (days):	40	Silage Fed (kg DM/cow):	0.0
Grass Allocation/Cow (kg DM/cow):	16.0	Residual Height (cm):	4.0
No. of Cows:	30		
Concentrate Fed (kg/cow):	1.0		

Cover Parameters

Grass Allocation/LU (kg DM/LU):	16.0	Growth Rate (kg/ha/day):	33
Total Livestock (LU):	30.0	Farm Demand (kg DM/ha/day):	44
Farm Cover (kg DM/ha):	1088	Target Pre-grazing yield (kg DM/ha):	1766
Farm Cover (kg DM/LU):	394	Days Ahead:	25
Stocking Rate (LU/ha):	2.76	LW/ha (Liveweight/ha):	



1. Average farm cover (AFC) is 1088 kg DM/ha (394 kg DM/LU)
2. Growth rate last week was 33 kg DM/ha per day
3. Stocking rate is 2.76 LU/ha and demand is 41 kg DM/ha per day
4. AFC has decreased to 1088 kg DM/ha, which is a bit below target (see budget below) due to growth rate decreasing to 33 kg DM/ha per day. We have started supplementing with 1 kg of concentrate to reduce demand as growth is now below demand. We have started our last

rotation now and our aim is to close 30% of the farm by the 15th of October and 70% by the 1st of November.

- Pre-grazing yield is 2200 and we are allocating 16 kg DM of grass and 1 kg of concentrate per cow. Minerals are being given to the cows through the dosatron into the water.

Diploid swards (2.75 cows/ha)



Date Produced: 07-10-2014

PastureBase-Ireland

Grass Measurement Report

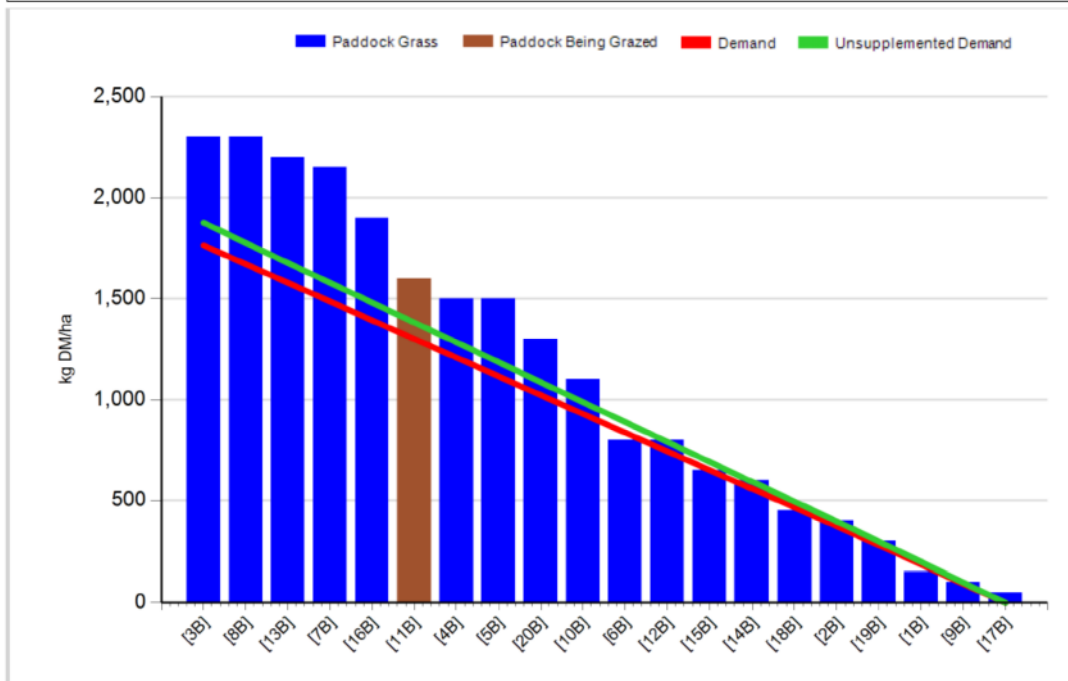
Group:	Cover Date: 06/10/2014
Farm: Clonakilty Farm	Treatment: D

Management Decisions

Rotation Length (days):	40	Silage Fed (kg DM/cow):	0.0
Grass Allocation/Cow (kg DM/cow):	16.0	Residual Height (cm):	4.0
No. of Cows:	30		
Concentrate Fed (kg/cow):	1.0		

Cover Parameters

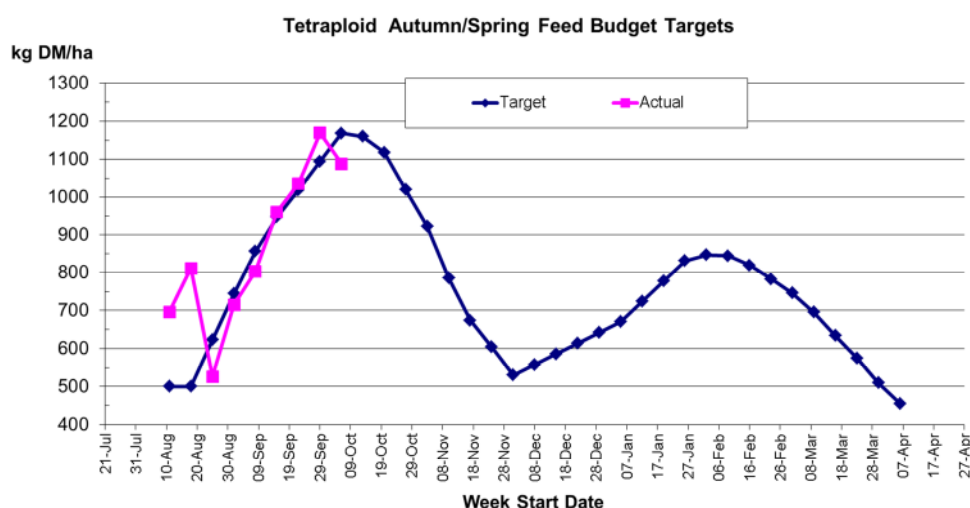
Grass Allocation/LU (kg DM/LU):	16.0	Growth Rate (kg/ha/day):	26
Total Livestock (LU):	30.0	Farm Demand (kg DM/ha/day):	44
Farm Cover (kg DM/ha):	1128	Target Pre-grazing yield (kg DM/ha):	1766
Farm Cover (kg DM/LU):	409		
Stocking Rate (LU/ha):	2.76		



- Average farm cover 1128 kg DM/ha (409 kg DM/LU)
- Growth rate last week was 26 kg DM/ha per day
- Stocking rate is 2.76 LU/ha and demand is 41 kg DM/ha per day
- AFC has decreased to 1128 kg DM/ha, which is a bit below target (see budget below) due to growth rate decreasing to 26 kg DM/ha per day. We have

started supplementing with 1 kg of concentrate to reduce demand as growth is now below demand. We have started our last rotation now and our aim is to close 30% of the farm by the 15th of October and 70% by the 1st of November.

- Pre-grazing yield is 2300 and we are allocating 16 kg DM of grass and 1 kg of concentrate per cow. Minerals are being given to the cows through the dosatron into the water.



Whole farm update

- Cows are currently milking 14.6 kg/day at 5.20% fat, 4.22% protein and 4.62% lactose. Milk solids per cow are 1.35 kg/day. Latest results from the processor 4.82% fat, 4.15 % protein, 4.74% lactose, 98 SCC and TBC is 3. Average bodyweight of milking cows is 524 kg and average body condition score is 2.88.
- Average farm cover on the general area is 1061 kg DM/ha (428 kg DM/LU). Demand is 37 kg DM/ha per day and growth rate on the general area last week was 51 kg DM/ha per day. Stocking rate is 2.48 LU/ha. General cows are receiving 1 kg concentrate/day.
- Breeding started on the 20th of April with the stock bulls being removed on Monday, the 14th of July, after a 12 week breeding season. 47 out of the 49 heifers are in-calf.
- Overall empty rate for the herd is 10.5% this year.