

Weekly update Clonakilty Dairy – 20 October 2014

Tetraploid swards (2.75 cows/ha)



Date Produced: 21-10-2014

PastureBase-Ireland Grass Measurement Report

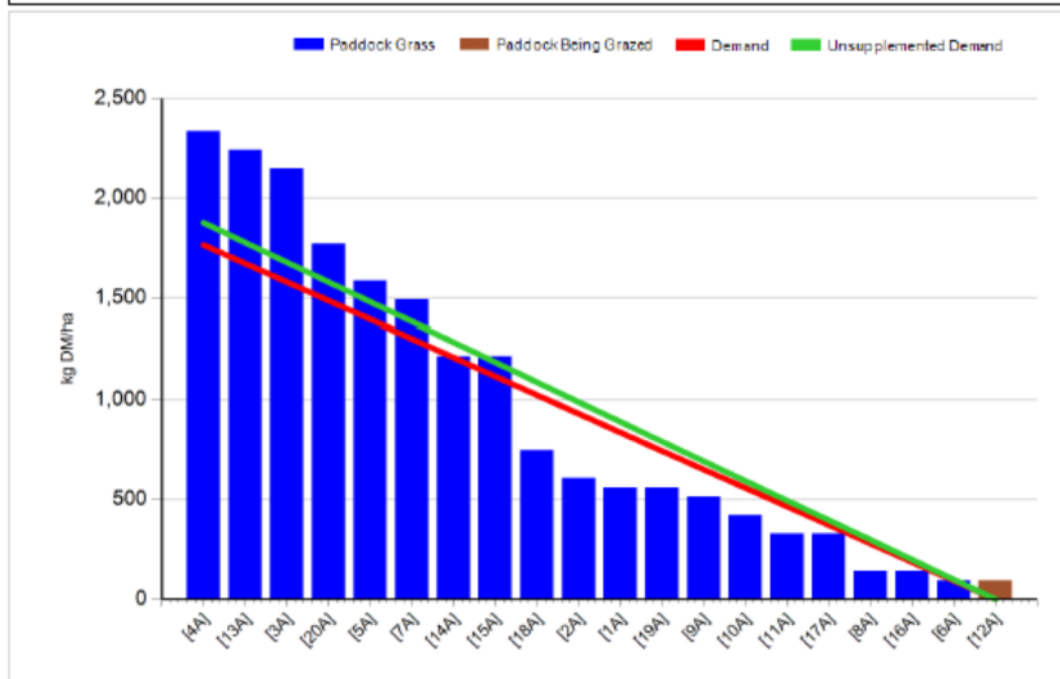
Group:	Cover Date: 20/10/2014
Farm: Clonakilty Farm	Treatment: T

Management Decisions

Rotation Length (days):	40	Silage Fed (kg DM/cow):	0.0
Grass Allocation/Cow (kg DM/cow):	16.0	Residual Height (cm):	4.0
No. of Cows:	30		
Concentrate Fed (kg/cow):	1.0		

Cover Parameters

Grass Allocation/LU (kg DM/LU):	16.0	Growth Rate (kg/ha/day):	27
Total Livestock (LU):	30.0	Farm Demand (kg DM/ha/day):	44
Farm Cover (kg DM/ha):	958	Target Pre-grazing yield (kg DM/ha):	1766
Farm Cover (kg DM/LU):	347	Days Ahead:	22
Stocking Rate (LU/ha):	2.76	LW/ha (Liveweight/ha):	



1. Average farm cover (AFC) is 958 kg DM/ha (347 kg DM/LU)
2. Growth rate last week was 27 kg DM/ha per day
3. Stocking rate is 2.76 LU/ha and demand is 44 kg DM/ha per day
4. AFC has decreased to 958 kg DM/ha, which is below target (see budget below) due to growth rate decreasing to 27 kg DM/ha per day. We are supplementing with 1 kg of concentrate to reduce demand. We have 44% of the farm grazed to the 20th of October, which is slightly ahead of target

but we had skipped into lighter covers during the wet weather so we have a few heavy covers to get through yet which will slow us down.

- Pre-grazing yield is 2400 and we are allocating 16 kg DM of grass and 1 kg of concentrate per cow. Minerals are being given to the cows through the dosatron into the water.

Diploid swards (2.75 cows/ha)

Date Produced: 21-10-2014



PastureBase-Ireland

Grass Measurement Report

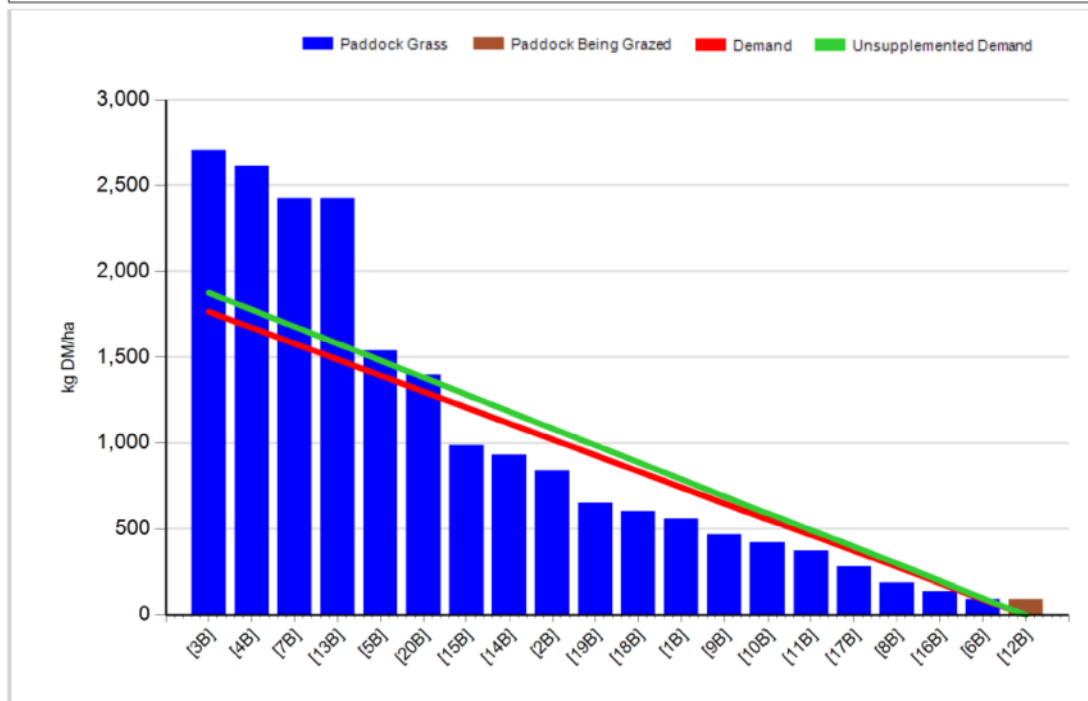
Group:	Cover Date: 20/10/2014
Farm: Clonakilty Farm	Treatment: D

Management Decisions

Rotation Length (days):	40	Silage Fed (kg DM/cow):	0.0
Grass Allocation/Cow (kg DM/cow):	16.0	Residual Height (cm):	4.0
No. of Cows:	30		
Concentrate Fed (kg/cow):	1.0		

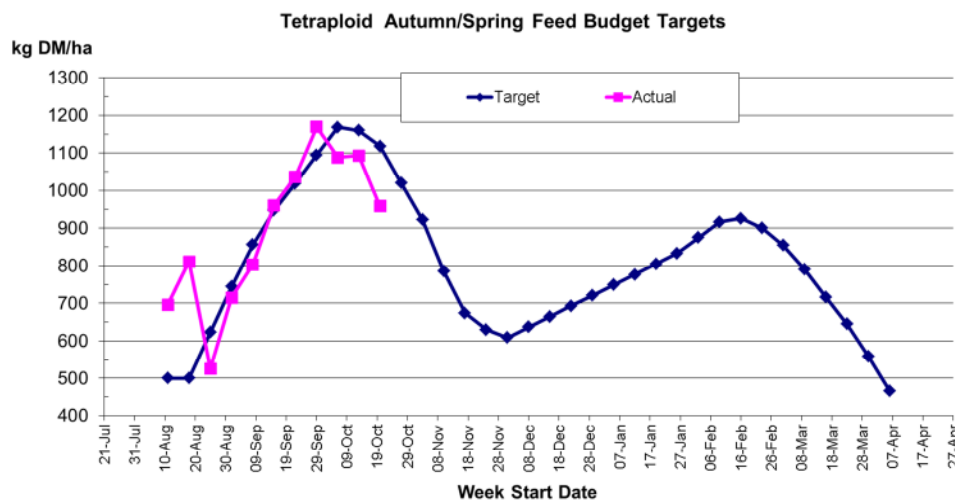
Cover Parameters

Grass Allocation/LU (kg DM/LU):	16.0	Growth Rate (kg/ha/day):	29
Total Livestock (LU):	30.0	Farm Demand (kg DM/ha/day):	44
Farm Cover (kg DM/ha):	1030	Target Pre-grazing yield (kg DM/ha):	1766
Farm Cover (kg DM/LU):	373		
Stocking Rate (LU/ha):	2.76		



- Average farm cover 1030 kg DM/ha (373 kg DM/LU)
- Growth rate last week was 29 kg DM/ha per day
- Stocking rate is 2.76 LU/ha and demand is 44 kg DM/ha per day

- AFC has decreased to 1030 kg DM/ha, which is a bit below target (see budget below) due to growth rate decreasing to 29 kg DM/ha per day. We have started supplementing with 1 kg of concentrate to reduce demand as growth is now below demand. We have 43% of the farm grazed to the 20th of October, which is slightly ahead of target but we had skipped into lighter covers during the wet weather so we have a few heavy covers to get through yet which will slow us down.
- Pre-grazing yield is 2600 and we are allocating 16 kg DM of grass and 1 kg of concentrate per cow. Minerals are being given to the cows through the dosatron into the water.



Whole farm update

- Cows are currently milking 12.8 kg/day at 5.29% fat, 4.34% protein and 4.58% lactose. Milk solids per cow are 1.21 kg/day. Latest results from the processor 5.16% fat, 4.32 % protein, 4.59% lactose, 124 SCC and TBC is 3. Average bodyweight of milking cows is 522 kg and average body condition score is 2.88.
- Average farm cover on the general area is 977 kg DM/ha (394 kg DM/LU). Demand is 37 kg DM/ha per day and growth rate on the general area last week was 37 kg DM/ha per day. Stocking rate is 2.48 LU/ha. General cows are receiving 1 kg concentrate/day.
- Breeding started on the 20th of April with the stock bulls being removed on Monday, the 14th of July, after a 12 week breeding season. 47 out of the 49 heifers are in-calf.
- Overall empty rate for the herd is 10.5% this year.