

Weekly update Clonakilty Dairy – 24 August 2015

Tetraploid swards (2.75 cows/ha)

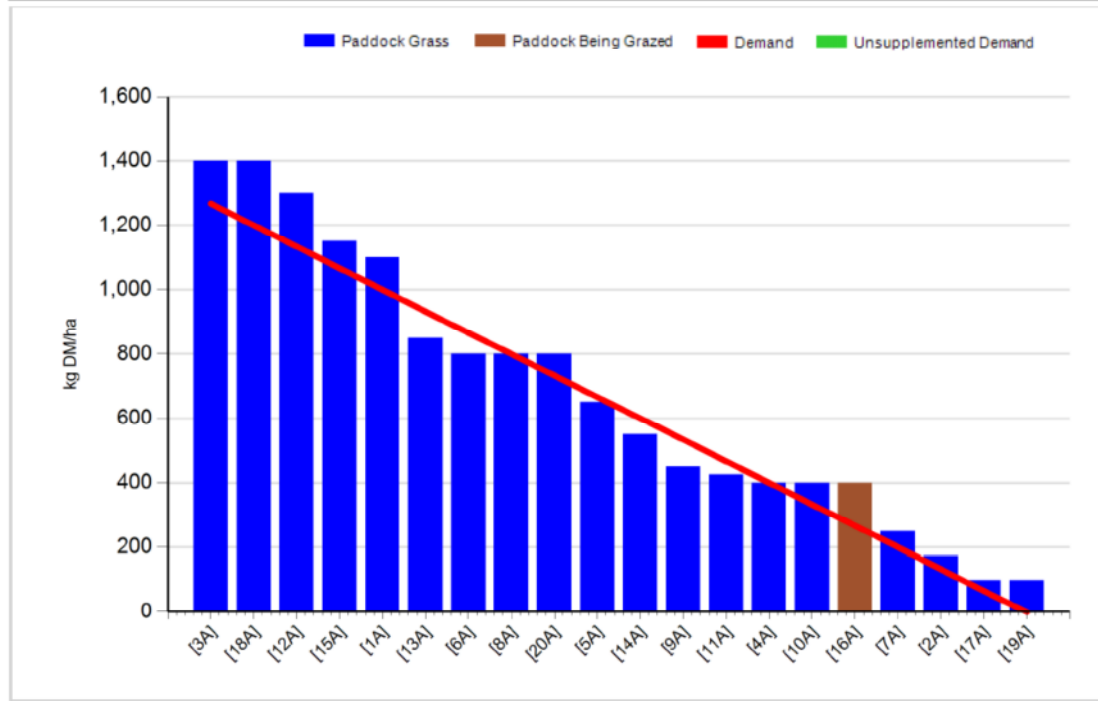
Group:	Cover Date: 24/08/2015
Farm: Clonakilty Farm	Treatment: T

Management Decisions

Rotation Length (days):	27	Silage Fed (kg DM/cow):	0.0
Grass Allocation/Cow (kg DM/cow):	17.0	Residual Height (cm):	4.0
No. of Cows:	30		
Concentrate Fed (kg/cow):	0.0		

Cover Parameters

Grass Allocation/LU (kg DM/LU):	17.0	Growth Rate (kg/ha/day):	60
Total Livestock (LU):	30.0	Farm Demand (kg DM/ha/day):	47
Farm Cover (kg DM/ha):	685	Target Pre-grazing yield (kg DM/ha):	1267
Farm Cover (kg DM/LU):	248	Days Ahead:	15
Stocking Rate (LU/ha):	2.76	LW/ha (Liveweight/ha):	0



1. We have 30 cows milking in this group.
2. Average farm cover (AFC) is 685 kg DM/ha (248 kg DM/LU).
3. Growth rate last week was 60 kg DM/ha per day
4. Stocking rate is 2.76 LU/ha and demand is 47 kg DM/ha per day.
5. Pre-grazing yield is 1400 kg. Rotation length is 27 days this week. Average Farm Cover is slightly above target at 685 kg DM/ha (target is 623 kg DM/ha, see budget below)but we are in a good position.
6. Cows are being allocating 17 kg DM of grass/cow and no concentrate is being fed. Minerals (Mg) are being administered through the water.
7. This group of cows are currently milking 15.7 kg/day at 4.83% fat and 4.22% protein. Milk solids per cow are 1.42 kg/day.

Tetraploid + clover swards (2.75 cows/ha)

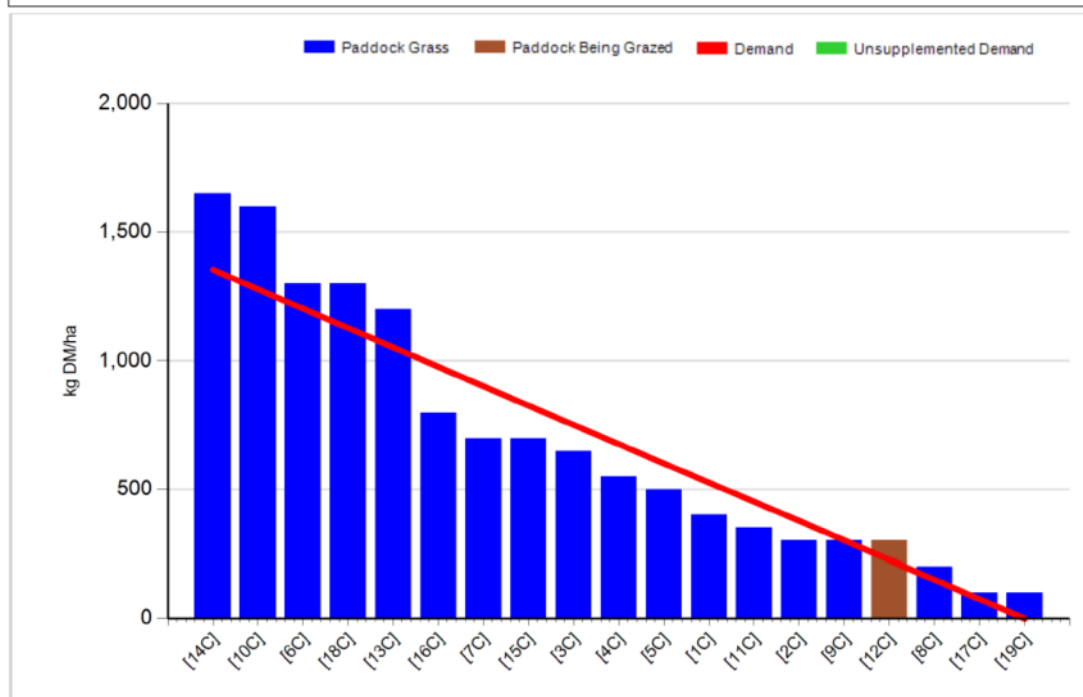
Group:	Cover Date: 24/08/2015
Farm: Clonakilty Farm	Treatment: TC

Management Decisions

Rotation Length (days):	27	Silage Fed (kg DM/cow):	0.0
Grass Allocation/Cow (kg DM/cow):	17.0	Residual Height (cm):	4.0
No. of Cows:	30		
Concentrate Fed (kg/cow):	0.0		

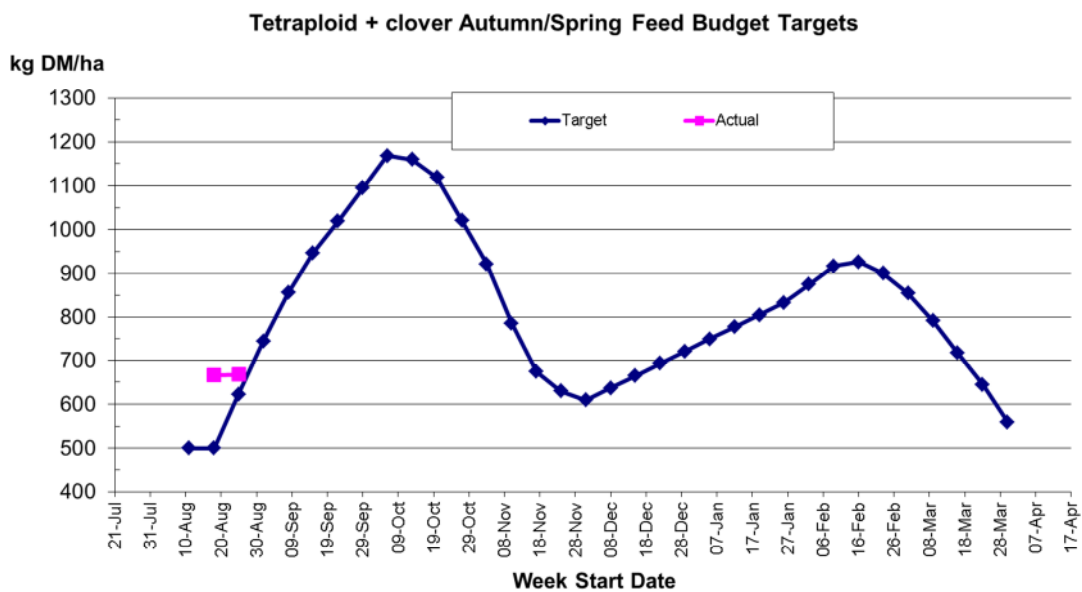
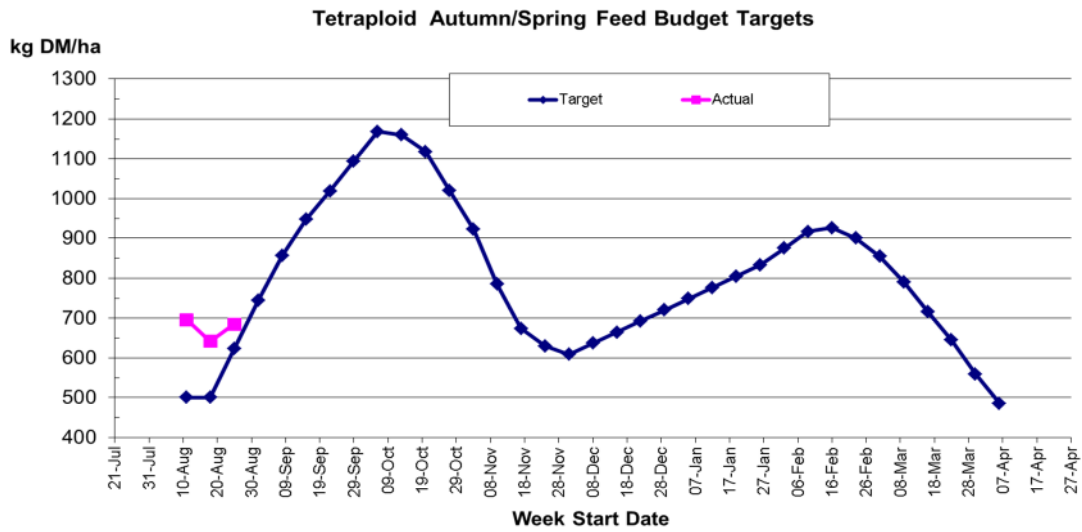
Cover Parameters

Grass Allocation/LU (kg DM/LU):	17.0	Growth Rate (kg/ha/day):	69
Total Livestock (LU):	30.0	Farm Demand (kg DM/ha/day):	50
Farm Cover (kg DM/ha):	668	Target Pre-grazing yield (kg DM/ha):	1354
Farm Cover (kg DM/LU):	226	Days Ahead:	13
Stocking Rate (LU/ha):	2.95	LW/ha (Liveweight/ha):	



1. We have 30 cows calved and milking in this group.
2. Average farm cover 668 kg DM/ha (228 kg DM/LU).
3. Growth rate last week was 69 kg DM/ha per day
4. Stocking rate is 2.95 LU/ha and demand is 50 kg DM/ha per day.
8. We skipped paddock 20 this week as there was a cover of 2400 kg DM/ha on it and AFC was close to 800 kg DM/ha. We will cut this for bales as soon as the weather allows. Average Farm Cover is slightly above target at 668 kg DM/ha (target is 623 kg DM/ha, see budget below). Growth rates are likely to be higher on the clover swards for the next few weeks so we have taken out paddock 20 in order to not let covers build up too quickly and to try and stick to the Autumn budget.
5. Pre-grazing yield is 1600 kg DM/ha and we are allocating 17 kg DM of grass/cow and no concentrate is being fed. Minerals (Mg) are being administered through the water.

- This group of cows are currently milking 19.1 kg/day at 5.05% fat and 3.87% protein and milk solids per cow are 1.70 kg/day.



Whole farm update

- We had 202 cows to calve this year and all cows are now calved. There are 179 cows being milked. 20 cows were sold after they calved.
- Cows are currently milking 17.6 kg/day at 5.08% fat, 3.97% protein and 4.71% lactose. Milk solids per cow are 1.58 kg/day. Latest results from the processor 4.46% fat, 4.02% protein, 4.82% lactose and 115 SCC, TBC 5. Average bodyweight of milking cows is 541 kg and average BCS is 2.96.

3. Average farm cover on the general area is 696 kg DM/ha (250 kg DM/LU). Demand is 39 kg DM/ha per day and growth rate on the general area last week was 53 kg DM/ha per day. Stocking rate is 2.78 LU/ha as paddocks 31 and 32 are still out for reseeding. We have 60 general cows calved and they are now being allocated 16 kg DM of grass and 1 kg of concentrate due to the low DM/LU.
4. Eight cows out of the 179 that were bred were not in-calf, giving us a 4.5% empty rate in a 12 week breeding period. Our 6-week in-calf rate was approximately 85%.
5. We had 42 out of 44 heifers bred in 11 days (96%). After scanning the heifers they are 100% in calf (44/44).
6. To date 215 kg/cow concentrate has been fed.