

Weekly update Clonakilty Dairy – 6 September 2015

Tetraploid swards (2.75 cows/ha)

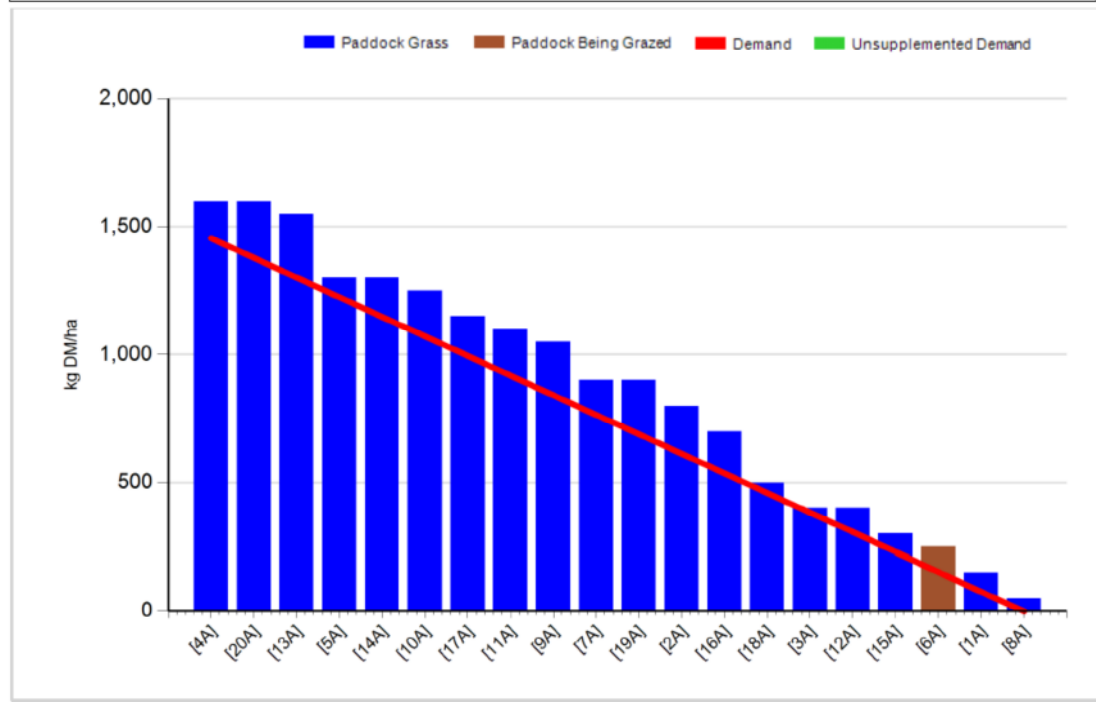
Group:	Cover Date: 07/09/2015
Farm: Clonakilty Farm	Treatment: T

Management Decisions

Rotation Length (days):	31	Silage Fed (kg DM/cow):	0.0
Grass Allocation/Cow (kg DM/cow):	17.0	Residual Height (cm):	4.0
No. of Cows:	30		
Concentrate Fed (kg/cow):	0.0		

Cover Parameters

Grass Allocation/LU (kg DM/LU):	17.0	Growth Rate:	47
Total Livestock (LU):	30.0	Farm Demand (kg DM/ha/day):	47
Farm Cover (kg DM/ha):	866	Target Pre-grazing yield (kg DM/ha):	1455
Farm Cover (kg DM/LU):	314	Days Ahead:	18
Stocking Rate (LU/ha):	2.76	LW/ha (Liveweight/ha):	0



1. We have 30 cows milking in this group.
2. Average farm cover (AFC) is 866 kg DM/ha (314 kg DM/LU).
3. Growth rate last week was 47 kg DM/ha per day
4. Stocking rate is 2.76 LU/ha and demand is 47 kg DM/ha per day.
5. Pre-grazing yield is 1550 kg. Rotation length is 31 days this week. Average Farm Cover is on target at 866 kg DM/ha (target is 856 kg DM/ha, see budget below) so we are on track. Growth matched demand last week at 47 kg DM/ha per day. We bulk spread the majority of the remaining nitrogen last week (in the form of Urea at either 23 or 34 units per acre) so hopefully this will give growth a boost and allow us to build cover without supplementing. We will monitor growth rates closely and if

growth isn't high enough we will supplement to reduce demand and keep building AFC.

6. Cows are being allocating 17 kg DM of grass/cow and no concentrate is being fed. Minerals (Mg) are being administered through the water.
7. This group of cows are currently milking 14.7 kg/day at 5.05% fat and 4.36% protein. Milk solids per cow are 1.37 kg/day.

Tetraploid + clover swards (2.75 cows/ha)

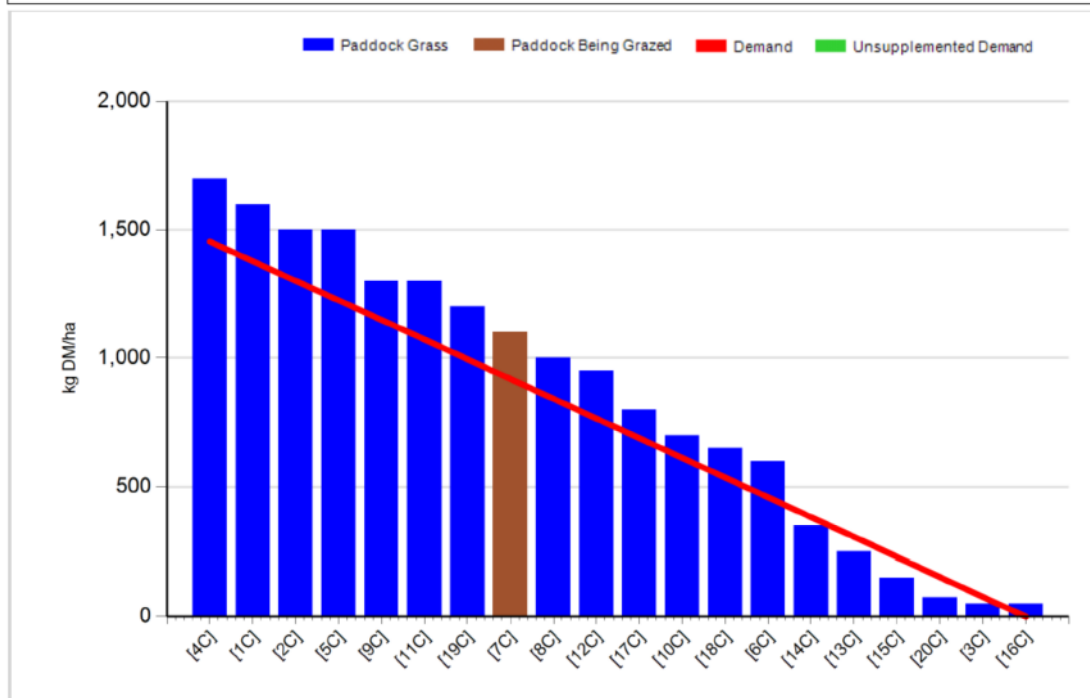
Group:	Cover Date: 07/09/2015
Farm: Clonakilty Farm	Treatment: TC

Management Decisions

Rotation Length (days):	31	Silage Fed (kg DM/cow):	0.0
Grass Allocation/Cow (kg DM/cow):	17.0	Residual Height (cm):	4.0
No. of Cows:	30		
Concentrate Fed (kg/cow):	0.0		

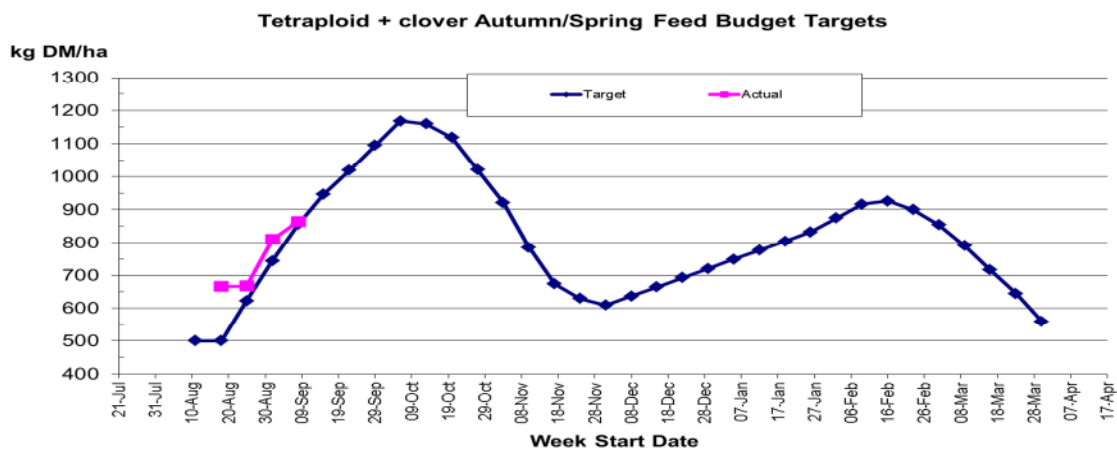
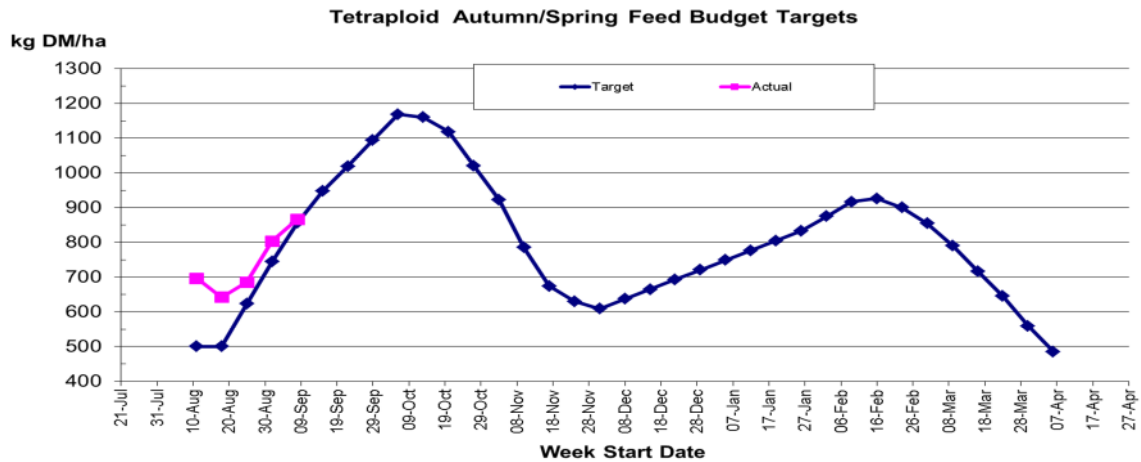
Cover Parameters

Grass Allocation/LU (kg DM/LU):	17.0	Growth Rate:	74
Total Livestock (LU):	30.0	Farm Demand (kg DM/ha/day):	47
Farm Cover (kg DM/ha):	865	Target Pre-grazing yield (kg DM/ha):	1455
Farm Cover (kg DM/LU):	313	Days Ahead:	18
Stocking Rate (LU/ha):	2.76	LW/ha (Liveweight/ha):	0



1. We have 30 cows calved and milking in this group.
2. Average farm cover 865 kg DM/ha (313 kg DM/LU).
3. Growth rate last week was 74 kg DM/ha per day
4. Stocking rate is 2.76 LU/ha and demand is 47 kg DM/ha per day.
5. Paddock 20 was cut for bales last week. Average Farm Cover is on target at 865 kg DM/ha (target is 856 kg DM/ha, see budget below) so we are right on track. Growth is well above demand for this group this week so we should continue to build AFC with having to supplement.

- Pre-grazing yield is 1600 kg DM/ha and we are allocating 17 kg DM of grass/cow and no concentrate is being fed. Minerals (Mg) are being administered through the water.
- This group of cows are currently milking 18.9 kg/day at 4.91% fat and 4.11% protein and milk solids per cow are 1.70 kg/day.



Whole farm update

- We had 202 cows to calve this year and all cows are now calved. There are 179 cows being milked. 20 cows were sold after they calved.
- Cows are currently milking 17.2 kg/day at 4.80% fat, 4.17% protein and 4.69% lactose. Milk solids per cow are 1.53 kg/day. Latest results from the processor 4.62% fat, 4.09% protein, 4.75% lactose and 103 SCC, TBC 5. Average bodyweight of milking cows is 541 kg and average BCS is 2.96.
- Average farm cover on the general area is 751 kg DM/ha (290 kg DM/LU). Demand is 33 kg DM/ha per day and growth rate on the general area last week was 59 kg DM/ha per day. Stocking rate is 2.59 LU/ha. We have 60 general cows calved and they are now being allocated 14 kg DM of grass and 3 kg of concentrate.

4. Eight cows out of the 179 that were bred were not in-calf, giving us a 4.5% empty rate in a 12 week breeding period. Our 6-week in-calf rate was approximately 85%.
5. We had 42 out of 44 heifers bred in 11 days (96%). After scanning the heifers they are 100% in calf (44/44).
6. The heifers were weighed last week and their average weight was 465 kg.
7. To date 215 kg/cow concentrate has been fed.