

Weekly update Clonakilty Dairy – 03 August 2016

Tetraploid swards (2.75 cows/ha)

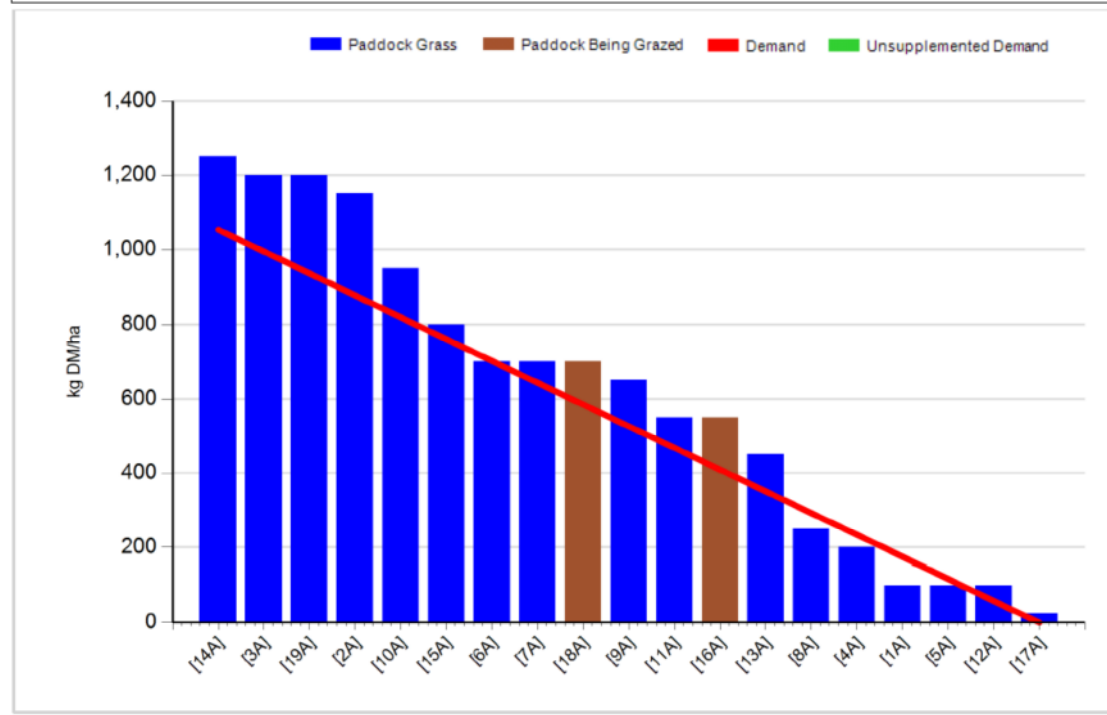
Group:	Cover Date: 02/08/2016
Farm: Clonakilty Farm	Treatment: T

Management Decisions

Rotation Length (days):	21	Silage Fed (kg DM/cow):	0.0
Grass Allocation/Cow (kg DM/cow):	17.0	Residual Height (cm):	4.0
No. of Cows:	30		
Concentrate Fed (kg/cow):	0.0		

Cover Parameters

Grass Allocation/LU (kg DM/LU):	17.0	Growth Rate:	77
Total Livestock (LU):	30.0	Farm Demand (kg DM/ha/day):	50
Farm Cover (kg DM/ha):	600	Target Pre-grazing yield (kg DM/ha):	1053
Farm Cover (kg DM/LU):	203	Days Ahead:	12
Stocking Rate (LU/ha):	2.95	LW/ha (Liveweight/ha):	0

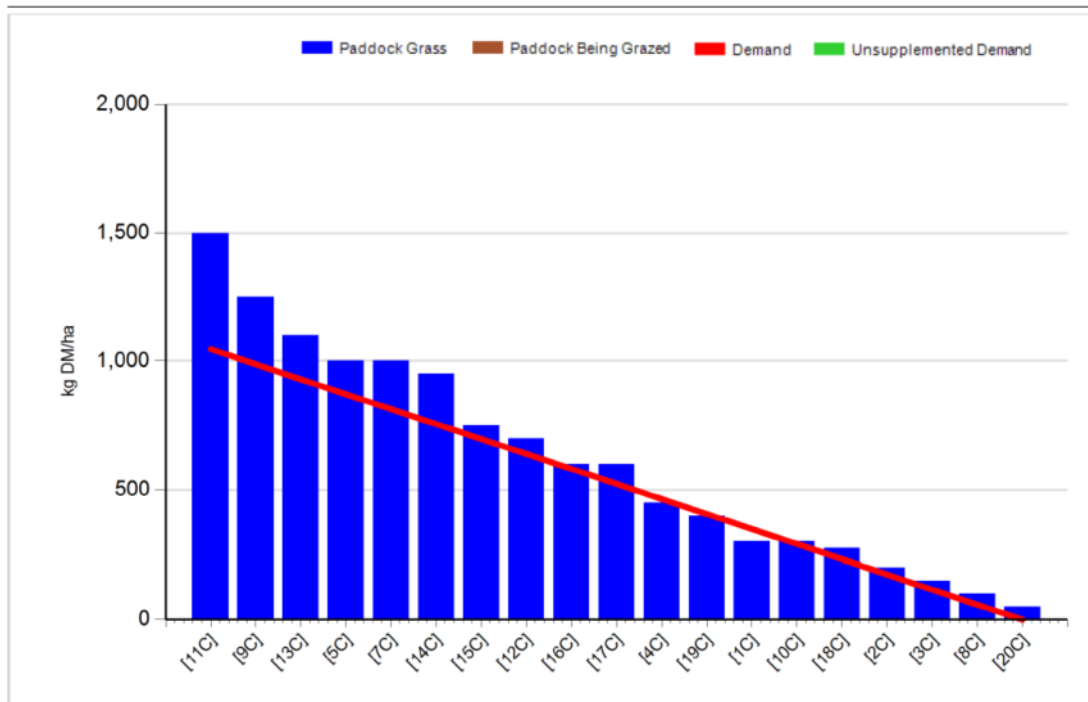


1. We have 30 cows calved and milking in this group.
2. Average farm cover (AFC) is 600 kg DM/ha (203 kg DM/LU).
3. Growth rate last week was 77 kg DM/ha per day.
4. Stocking rate is 2.95 LU/ha and demand is 50 kg DM/ha per day.
5. Second cut silage was cut on the 19th of July and growth rates have been in the 80's since then so a number of paddocks have been cut for bales over the last few weeks. This has cleaned up most of the paddocks at this stage. We skipped paddock 20 this week and if growth rates remain high we will probably have to skip another paddock or two next week. We will cut these next week as soon as the weather improves.

- Pre-grazing yield is 1250 and we are allocating 17 kg DM of grass and no concentrate is being fed. Minerals (Mg, I, Se, Zn, Cu and Co) are being administered through the water.
- Current milk yield for this group is 18.2 kg/day at 4.50% fat and 3.90% protein giving 1.53 kg milk solids/cow per day.

Tetraploid + clover swards (2.75 cows/ha)

Group:	Cover Date: 02/08/2016		
Farm: Clonakilty Farm	Treatment: TC		
Management Decisions			
Rotation Length (days):	21	Silage Fed (kg DM/cow):	0.0
Grass Allocation/Cow (kg DM/cow):	17.0	Residual Height (cm):	4.0
No. of Cows:	30		
Concentrate Fed (kg/cow):	0.0		
Cover Parameters			
Grass Allocation/LU (kg DM/LU):	17.0	Growth Rate:	63
Total Livestock (LU):	30.0	Farm Demand (kg DM/ha/day):	50
Farm Cover (kg DM/ha):	611	Target Pre-grazing yield (kg DM/ha):	1046
Farm Cover (kg DM/LU):	209	Days Ahead:	12
Stocking Rate (LU/ha):	2.93	LW/ha (Liveweight/ha):	0



- We have 30 cows calved and milking in this group.
- Average farm cover (AFC) is 611 kg DM/ha (209 kg DM/LU).
- Growth rate last week was 63 kg DM/ha per day.
- Stocking rate is 2.93 LU/ha and demand is 50 kg DM/ha per day.
- Second cut silage was cut on the 19th of July and growth rates have been in the 80's since then so a number of paddocks have been cut for bales over the last few weeks. This has cleaned up most of the paddocks at this stage. We skipped paddock 20 this week and if growth rates remain high we will

probably have to skip another paddock or two next week. We will cut these next week as soon as the weather improves.

6. Pre-grazing yield is 1500 and we are allocating 17 kg DM of grass and no concentrate is being fed. Minerals (Mg, I, Se, Zn, Cu and Co) are being administered through the water.
7. Current milk yield for this group is 22.1 kg/day at 4.41% fat and 3.69% protein giving 1.78 kg milk solids/cow per day.

Whole farm update

1. We had 205 cows to calve this year. There are 180 cows being milked. All cows are calved. Some late calving cows were sold before they calved, some were sold after calving and some culls went to the factory.
2. Latest results from the processor 4.44% fat, 3.94% protein, 4.80% lactose and 74 SCC, TBC 3. Average bodyweight of milking cows is 513 kg and average body condition score is 2.97.
3. Average farm cover on the general area is 499 kg DM/ha (180 kg DM/LU). Demand is 37 kg DM/ha per day and growth rate on the general area last week was 45 kg DM/ha per day. Stocking rate is 2.77 LU/ha. We skipped paddocks 32 and 33c for bales this week. We have 58 general cows milking. We are allocating 16 kg DM of grass and 1 kg of concentrate.
4. Breeding started on Monday the 25th of April. We had 96% of the cows submitted in 21 days and we had 88% of the heifers submitted in 12 days. We finished breeding on Friday the 15th of July. Initial scanning results are looking good for the cows with a six week in-calf rate of over 85%. We will provide further details on the fertility performance next week.