

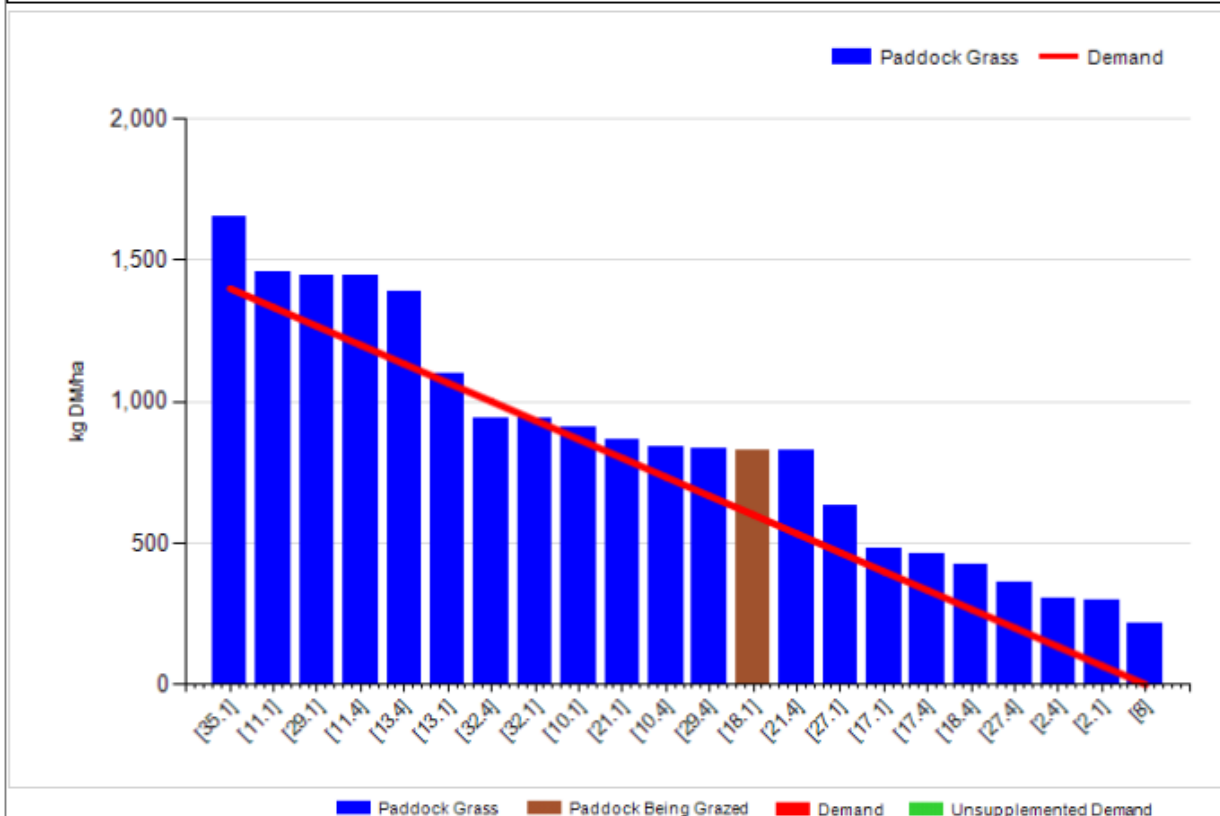
Johnstown Castle Winter Milk Herd- Weekly Management Notes

25/04/16

- Excellent drying & grazing conditions last week – not such good growing conditions! We had no Rainfall for the past week and soil temperatures recorded at 9.8 °C. The wind chill from the East is still holding back growth, despite the reasonable soil temp. Forecast for the coming week is for more of the same. Still working on 24-36hr allocations, with great utilisation & clean out of pastures, the cows are doing a good job levelling out any divets from previous grazing.
- Breeding season for the spring herd starts today (Monday 25th), similar routine as for autumn herd, Heifers will be bred to observed heat for first week, and then will get Prostaglandin to anything not served which hopefully will ensure that 95% of heifers will be bred in the first 10-11 day. Cycling activity is good with the cows, we had 3 “dirty cows” which were treated last week. All bar two or three of the last cows to calve should be available for service within the first cycle.
- Scanning results for the autumn herd have come back with approx. 17% empty, which is similar to previous years, but still disappointing. With good heifer numbers coming through & very few general health problems, we’ll still have surplus cow numbers for next autumn.
- We will be topping up fertiliser on the silage ground this week, on all the paddocks we’re sure are closed for silage. We still have more ground to close up, as I pulled a couple of paddocks back into the grazing area, due to the on-going cold weather. We would need growth rates hitting between 60-70kgs to match demand, but their probably averaging ~ 40-50kgs max for the past 10 days.

Cover Parameters

Grass Allocation/LU (kg DM/LU):	17.0	Growth Rate:	38
Total Livestock (LU):	66.0	Farm Demand (kg DM/ha/day):	67
Farm Cover (kg DM/ha):	818	Target Pre-grazing yield (kg DM/ha):	1400
Farm Cover (kg DM/LU):	208	Days Ahead:	12
Stocking Rate (LU/ha):	3.93	LW/ha (Liveweight/ha):	



	<i>This week (25/04/16)</i>	Autumn Calving Herd	Spring Calving Herd
Production	% of Herd Milking	100%	100%
	Milk Kg	25.8	29.2
	Fat %	4.14	4.16
	Protein %	3.71	3.28
	Milk Solids kg	2.0	2.16
Intake	Grazed Grass kgs/dm/cow	17	17
	Silage kgs/dm/cow	0	0
	Maize silage kgs/dm/cow		0
	Concentrate in TMR – kgs/dm/cow		
	Parlour concentrate kgs/dm/cow	3.0	3.0
Totals	<i>Lactation to date per cow</i>	Mean calving date 6 th Oct	Mean calving date 17 th Feb
	Days in Milk	202	70
	Milk kg	5255	1713
	Milk Solids kg	397	127
	Concentrate Fed	653 parlour & 740 kgTMR	210kgs