

Johnstown Castle Winter Milk Herd- Weekly Management Notes

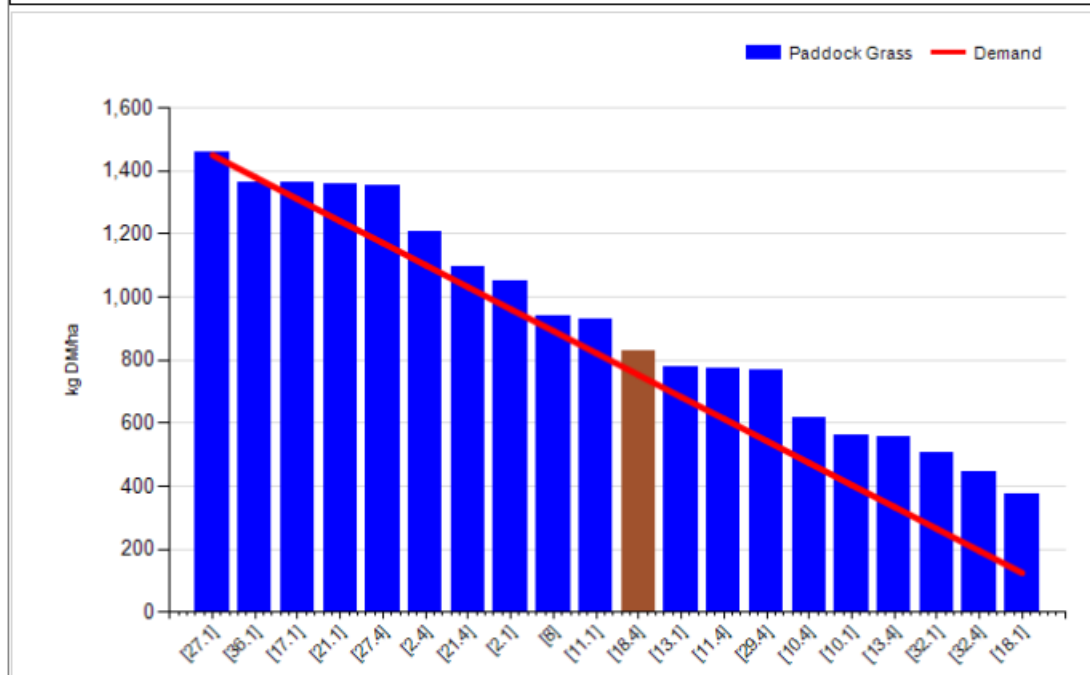
20/06/16

- The broken weather over the past week hasn't caused us any problems & has been helpful in terms of growth, we were lucky to have missed the extreme localised downpours, whilst still getting a total of 27.2mm rain for the past week, soil temperatures dropped back to 16.8°C average.
- In general grass quality has improved, we'd be happy that most paddocks are back to 'thicker leafier swards' with nice pre-grazing covers of ~1400kgs.
- With the improved grass quality, milk yield & solids have held on the autumn herd & increased slightly on the previous week in the spring herd (probably 30% of paddocks grazed over the past week was after-grass from surpluses). All cows are effectively off concentrate.
- The paddocks which we skipped last week, will be taken out this week as soon as conditions allow, these were quite poor in terms of bulk last week, with a poor 'butt'. Following the rain they've improved considerably over the past 5 days, silage quality will not be as good as normal surplus bales but should still be very good.

Rotation Length (days):	20	Silage Fed (kg DM/cow):	0.0
Grass Allocation/Cow (kg DM/cow):	18.0	Residual Height (cm):	4.5
No. of Cows:	65		
Concentrate Fed (kg/cow):	0.3		

Cover Parameters

Grass Allocation/LU (kg DM/LU):	18.0	Growth Rate:	69
Total Livestock (LU):	65.0	Farm Demand (kg DM/ha/day):	75
Farm Cover (kg DM/ha):	916	Target Pre-grazing yield (kg DM/ha):	1450
Farm Cover (kg DM/LU):	219	Days Ahead:	12
Stocking Rate (LU/ha):	4.19	LW/ha (Liveweight/ha):	



	<i>This week (20/06/16)</i>	Autumn Calving Herd	Spring Calving Herd
Production	% of Herd Milking	100%	100%
	Milk Kg	19.5	24.8
	Fat %	4.22	3.98
	Protein %	3.83	3.59
	Milk Solids kg	1.57	1.87
Intake	Grazed Grass kgs/dm/cow	18	18
	Silage kgs/dm/cow	0	0
	Maize silage kgs/dm/cow		0
	Concentrate in TMR – kgs/dm/cow		
	Parlour concentrate kgs/dm/cow	0.3	0.3
Totals	<i>Lactation to date per cow</i>	Mean calving date 6 th Oct	Mean calving date 17 th Feb
	Days in Milk	258	126
	Milk kg	6470	3250
	Milk Solids kg	496	238
	Concentrate Fed	716 parlour & 740 kgTMR	293kgs

Replacement Weights

Group	Spring Born 2014 D.O.B: 25/02/14 Avg EBI: 205	Autumn Born 2014 D.O.B: 3/10/14 Avg EBI: 221	Spring Born 2015 D.O.B: 17/02/15 Avg EBI: 230	Autumn Born 2015 D.O.B: 01/10/15 Avg EBI: 232	Spring Born 2016 D.O.B: 09/02/16 Avg EBI: 253
Birth	39	39	36	41	37
22-Jul-14	155				
22-Sep-14	226				
11-Dec-14					
6-Feb-15	297				
21-Apr-15	391 (breeding)	186			
28-Jul-15	471	288	158		
31-Aug-15	518	317	191		
30-Sep-15	549	351	220		
11-Dec-15	589	381	267	93	
20-Jan-16	615	403	294	136	
30-Mar-16		441	330	183	
25-Apr-16		445	351 (breeding)	203	
10-Jun-16		503	404	258	129