

Johnstown Castle Winter Milk Herd- Weekly Management Notes

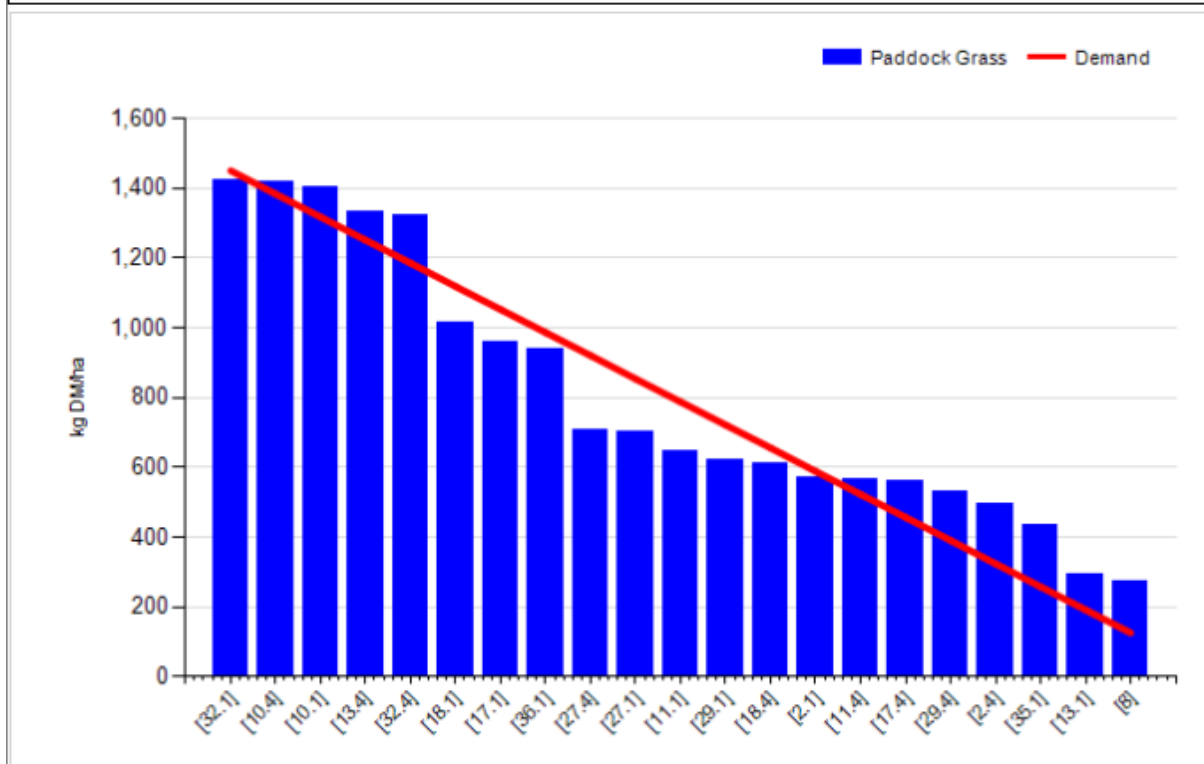
04/07/16

- Weather for the past couple of weeks has been quite mixed, with significant rain at times along with good drying conditions in between. For the past week we had 38.8mm of rain, soil temperatures were 15.8°C average. Grazing conditions are still very good. We would like to cut 2nd cut silage soon so hopefully we'll get a few good dry days together within the next week.
- Grass quality has been quite good for the past few weeks, but growth rates have dropped back a bit this week, which we were a little bit surprised about. In order to stay within permitted nitrogen levels we're spreading only 28kgs/N/ha for the last few rounds, so maybe this is a little below optimum, given the good growth of the past month. We have should have some paddocks which were cut for surplus coming back in within the next 10 days. Pre-grazing covers still near the target of 1450kgs.
- Milk yields continue to drop off slowly, but milk solids are still acceptable. Bulls are still running with the spring calved cows, but they don't appear to be too busy, which is a good sign.

Rotation Length (days):	20	Silage Fed (kg DM/cow):	0.0
Grass Allocation/Cow (kg DM/cow):	18.0	Residual Height (cm):	4.5
No. of Cows:	65		
Concentrate Fed (kg/cow):	0.3		

Cover Parameters

Grass Allocation/LU (kg DM/LU):	18.0	Growth Rate:	53
Total Livestock (LU):	65.0	Farm Demand (kg DM/ha/day):	72
Farm Cover (kg DM/ha):	793	Target Pre-grazing yield (kg DM/ha):	1450
Farm Cover (kg DM/LU):	198	Days Ahead:	11
Stocking Rate (LU/ha):	4.00	LW/ha (Liveweight/ha):	



	<i>This week (04/07/16)</i>	Autumn Calving Herd	Spring Calving Herd
Production	% of Herd Milking	100%	100%
	Milk Kg	17.3	22.0
	Fat %	4.46	3.96
	Protein %	3.87	3.61
	Milk Solids kg	1.42	1.67
Intake	Grazed Grass kgs/dm/cow	18	18
	Silage kgs/dm/cow	0	0
	Maize silage kgs/dm/cow		0
	Concentrate in TMR – kgs/dm/cow		
	Parlour concentrate kgs/dm/cow	0.3	0.3
Totals	<i>Lactation to date per cow</i>	Mean calving date 6 th Oct	Mean calving date 17 th Feb
	Days in Milk	272	140
	Milk kg	6714	3552
	Milk Solids kg	516	260
	Concentrate Fed	720 parlour & 740 kgTMR	303kgs